

Features

Individual addressable manual fire alarm stations

- Power and data supplied by MX Technology addressable loop communications using a single wire pair
- EMI compatibility
- Installation location of the pull stations are identified by activating the on-board Reed Switch
- Internally mounted addressable module is similar to the design of the A4090-5255 Mini-IAM
- Available as single action or double action breakglass operation
- Inbuilt LED to indicate communications with panel and status of contacts monitoring
- Pull lever that protrudes when alarmed
- Break-rod supplied (use is optional)
- Complying standards: UL864
- Complies with ADA requirement

Compatibility

- For use with Autocall 4100ES, 4010ES, and 4100U series fire alarm control units equipped with an MX Loop module
- Refer to datasheet for MX Loop Module details

Compact construction

- Electronics module enclosure minimizes dust infiltration
- Mounting in standard electrical boxes
- Screw terminals for wiring connections

Tamper resistant reset key lock (keyed same as Autocall fire alarm cabinets)

Multiple mounting options:

- Surface or semi-flush with standard boxes or matching Autocall boxes
- Flush mount adapter kit
- Adapters are available for retrofitting to commonly available existing boxes

Description

MX addressable stations contain an integral addressable module that constantly monitors status and communicates with an MX Loop Module located in the host fire alarm control unit.

Operation

Activation of the A4099-5213 single action manual station requires a firm downward pull to activate the alarm switch. Completing the action breaks an internal plastic break-rod (visible below the pull lever, use is optional). The break-rod can act as a deterrent to vandalism without interfering with the minimum pull requirements needed for easy activation. The pull lever latches into the alarm position and remains extended out of the housing to provide a visible indication.

A4099-5212 double action stations (breakglass) Strike the front-mounted hammer to break the glass and expose the recessed pull lever. The pull lever then operates as a single action station.

Station reset requires the use of a key to reset the manual station lever and deactivate the alarm switch. If the break-rod is used, it must be replaced.

Station testing Pull the lever to test the station. Electrical testing is performed by unlocking the station housing to activate the alarm switch.

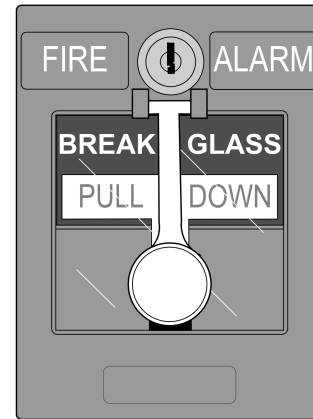


Figure 1: A4099-5213 single action manual station (front and side view)

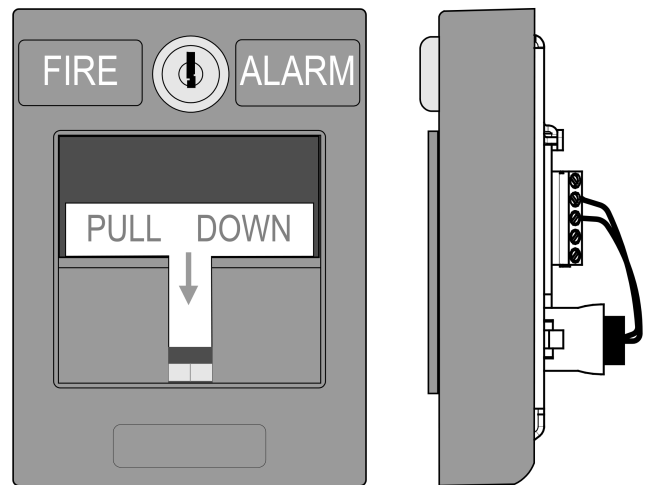


Figure 2: A4099-5212 double action (breakglass) manual station

Addressable manual station semi-flush mounting

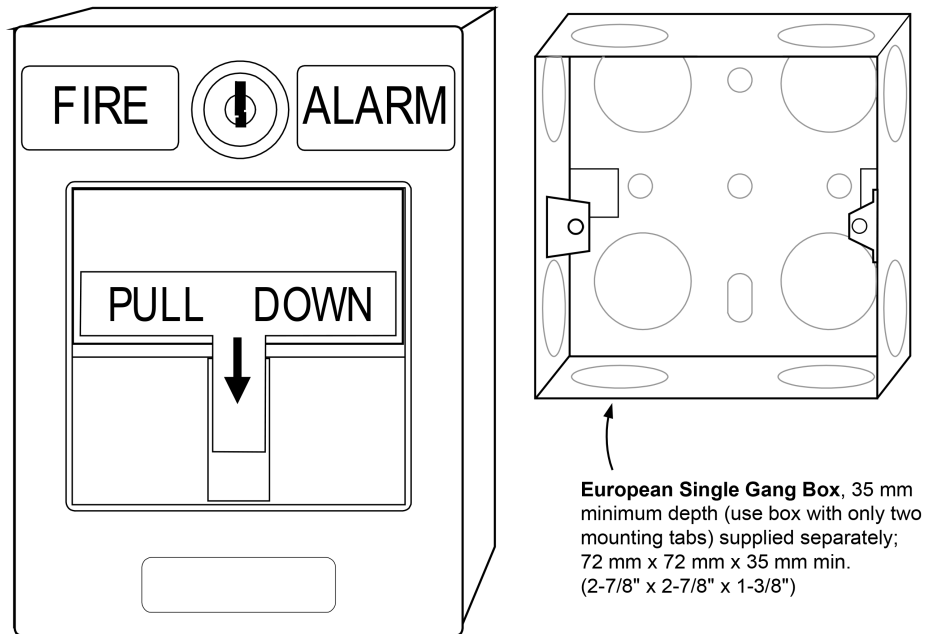


Figure 3: Addressable manual station semi-flush mounting

Addressable manual stations surface mounting

Preferred mounting. For surface mounting of these addressable manual stations, the preferred electrical boxes are shown in Figure 4.

Additional mounting reference. Refer to [Addressable manual station, additional mounting information](#) for wiremold box mounting compatibility.

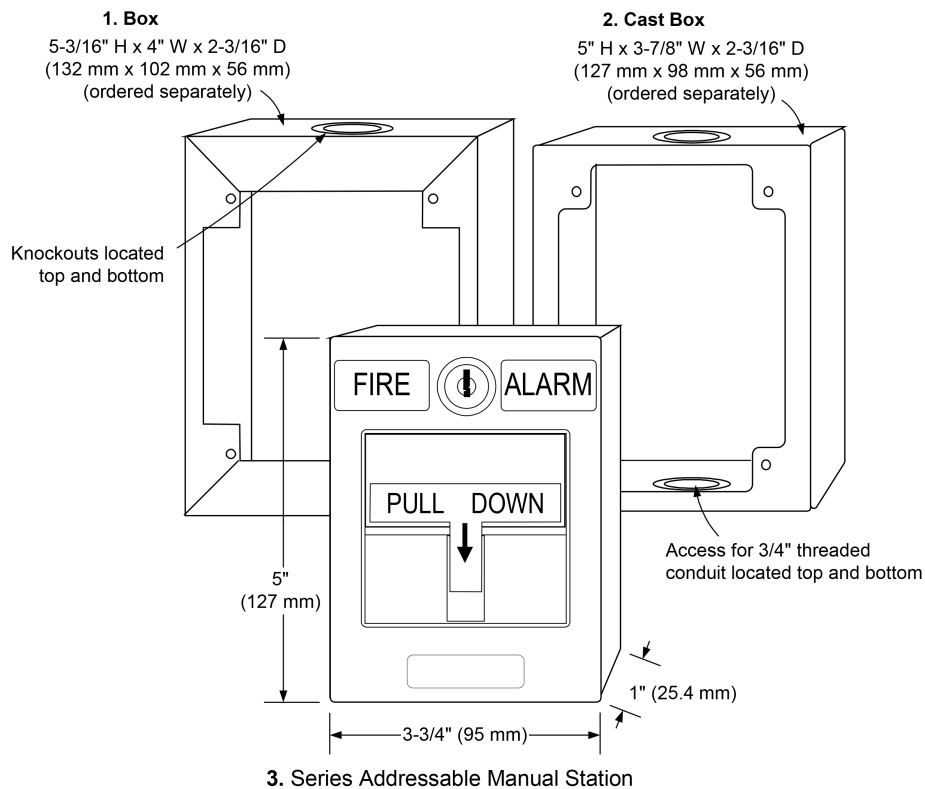
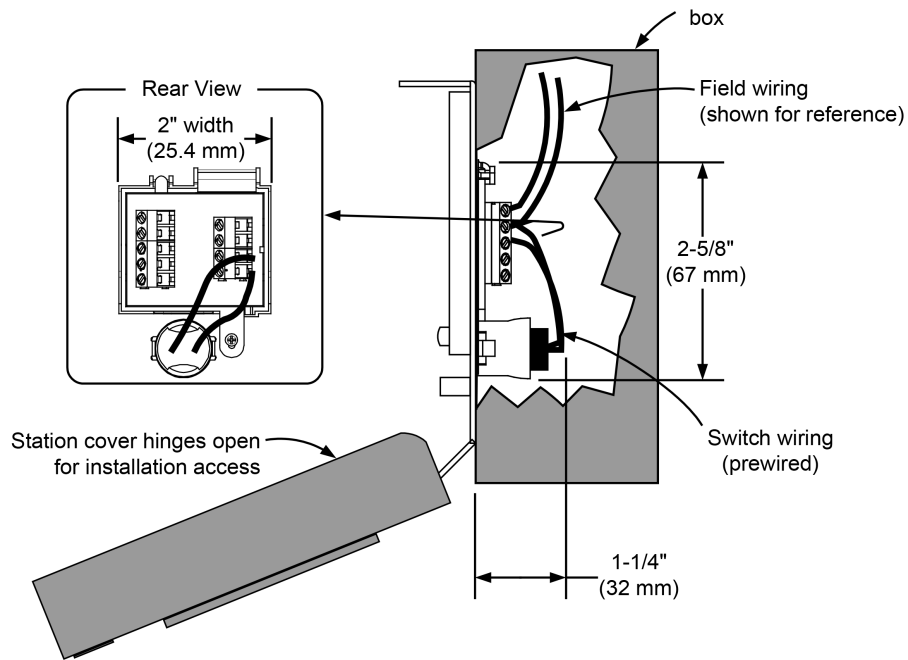


Figure 4: 4099 mounting

Surface mount side view with internal detail

Figure 5: Internal detail
Application reference

Refer to NFPA 72, the *National Fire Alarm and Signaling Code*, and all applicable local codes for complete requirements for manual stations. The following summarizes the basic requirements.

1. Stations are located in the normal path of exit and distributed in the protected area such that they are unobstructed and readily accessible.
2. Mount the operable part not less than 3.5 ft (1.1 m) and not more than 4.5 ft (1.37 m) above floor level.
3. At least one station should be provided on each floor. Additional stations should be provided to obtain a travel distance not more than 200 ft (61 m) to the nearest station from any point in the building.
4. When manual station coverage appears limited in any way, additional stations should be installed.

Addressable manual station, additional mounting information

For retrofit and new installations, additional compatible mounting boxes and the required adapter plates are shown in Figure 6.

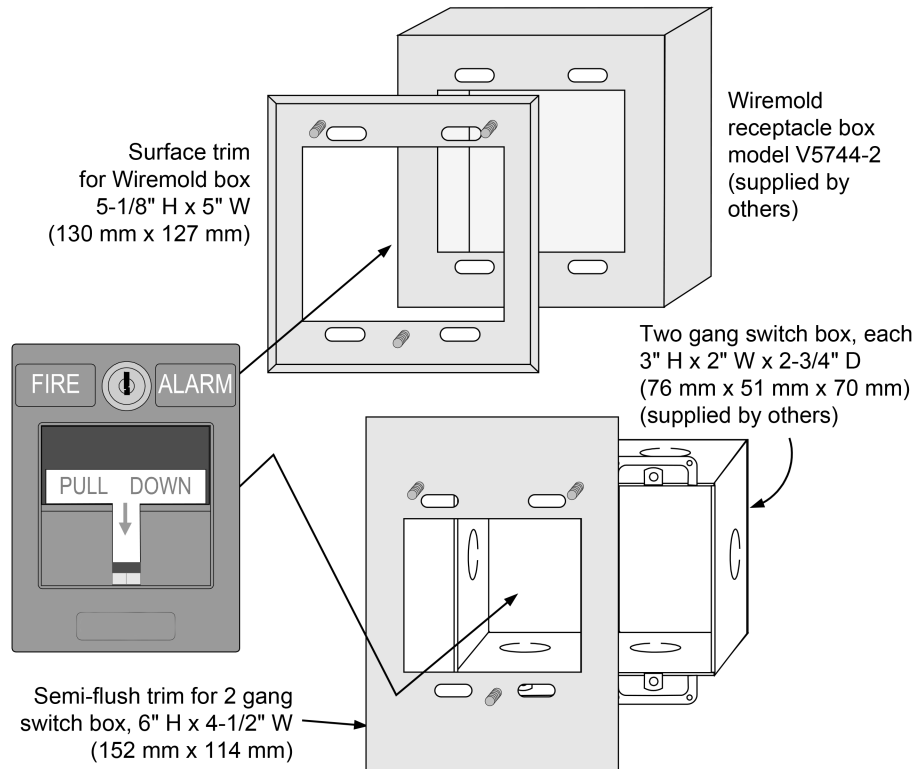


Figure 6: Additional mounting information

Addressable manual station, flush mounting information

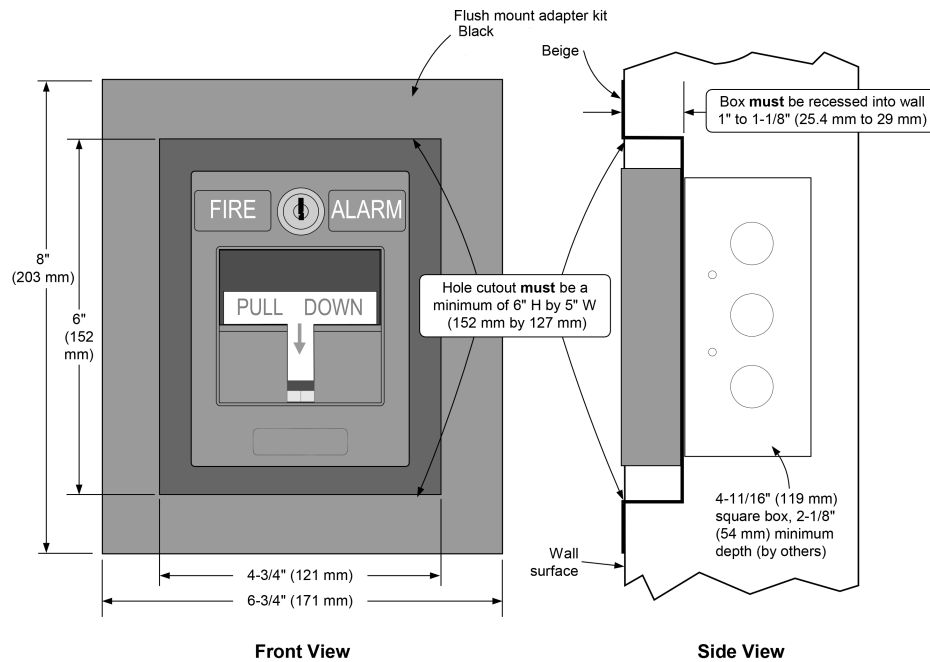


Figure 7: Flush mounting information

MX technology addressable manual station product selection

Table 1: Addressable manual stations, red housing with white letters and white pull lever

Model	Description
A4099-5123	Single action operation
A4099-5212	Double action, breakglass operation

Table 2: Accessories

Model	Description
2975-9178	Surface mount steel box, red
2975-9022	Cast aluminum surface mount box, red
2099-9813	Semi-flush trim plate for double gang switch box, red
2099-9814	Surface trim plate for Wiremold box V5744-2, red
2099-9819	Flush mount adapter kit, black
2099-9820	Flush mount adapter kit, beige
2099-9803	Replacement breakglass
2099-9804	Replacement break-rod
A2099-9828	Institutional cover kit for field installation on A4099-9001

Specifications

Table 3: Specifications

Specifications	Rating
Power and communications	MX Loop, one address per manual station
Address means	Select with MX Service Tool
Wire connections	Terminal blocks, for wire size 20 to 14 AWG (0.5 mm ² to 2.5 mm ²)
UL listed temperature range	32°F to 120°F (0°C to 49°C) This is intended for indoor operation
Humidity range	Up to 93% RH at 100°F (38°C)
Housing color	Red with white raised lettering
Material	Housing and pull lever are Lexan polycarbonate or equal
Pull Lever color	White with red raised lettering
Housing dimensions	5 in. H x 3.75 in. W x 1 in. D (127 mm x 95 mm x 25 mm)
Installation instructions	579-948

