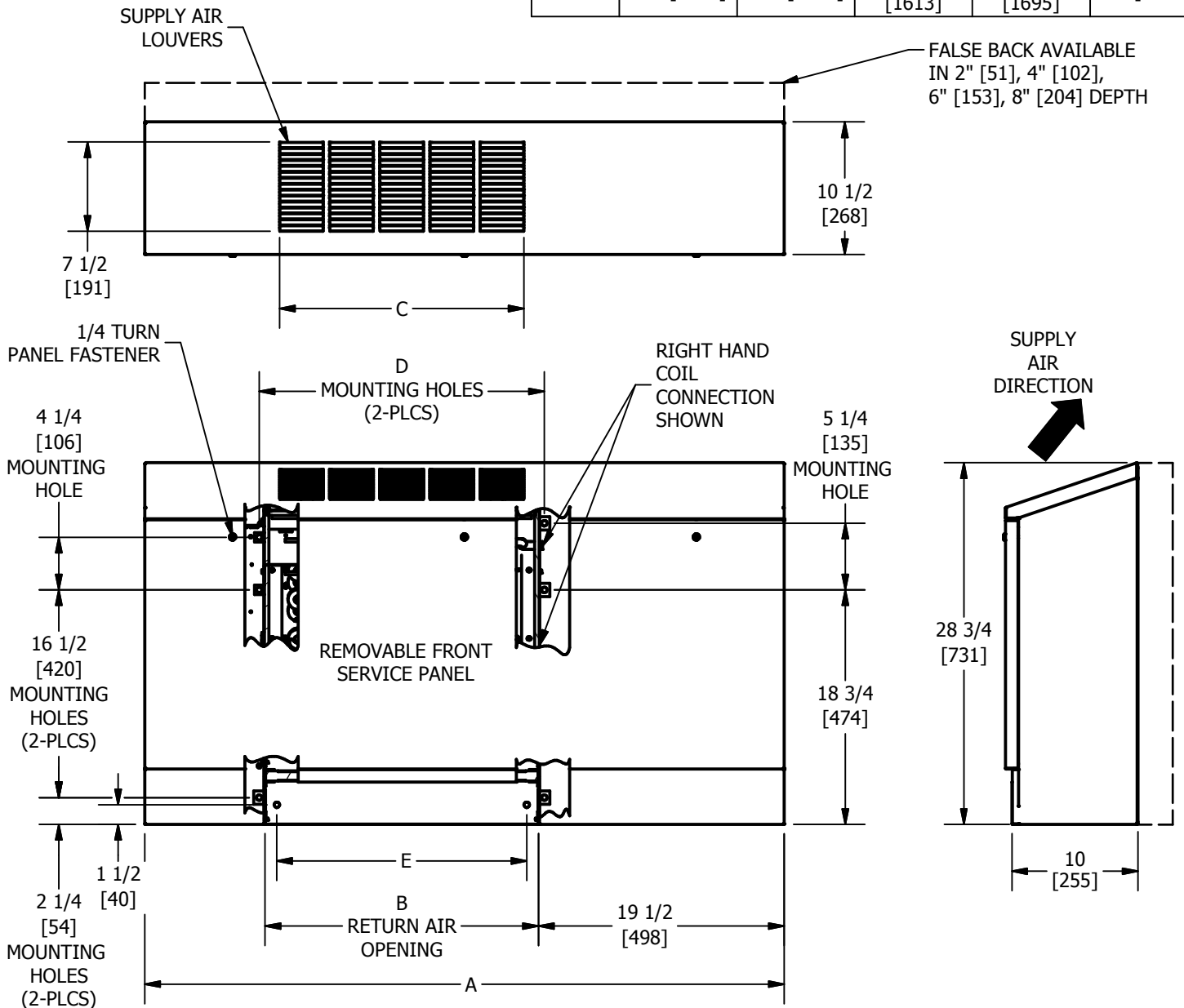


**NOTES:**

1. All dimensions are Inches [millimeters]. All dimensions are  $\pm 1/4"$  [6mm]. Metric values are soft conversion.
2. Junction box size and location varies with unit features. Control options may be limited. Provide sufficient clearance to access electrical controls and comply with applicable codes and ordinances.
3. Standard cabinet finish is "Pearl White Satin".
4. Right hand extended end pocket shown. Left hand unit similar, but opposite.
5. False backs ship loose for field installation.

**TABLE**

Column	Column 2	Column 3	Column 4	Column 5	Column 6
UNIT MODEL	DIM A	DIM B	DIM C	DIM D	DIM E
02	51 [1295]	22 [559]	19 1/2 [495]	22 3/4 [578]	20 [508]
03	55 [1397]	26 [660]	23 1/2 [597]	26 3/4 [679]	24 [607]
04	61 [1549]	32 [813]	27 1/2 [699]	32 3/4 [832]	30 [762]
06	71 [1803]	42 [1067]	39 1/2 [1003]	42 3/4 [1086]	40 [1016]
08	73 [1600]	44 [1118]	39 1/2 [1003]	44 3/4 [1137]	42 [1067]
10	87 [2210]	58 [1473]	55 1/2 [1410]	58 3/4 [1492]	53 [1347]
12	95 [2413]	66 [1676]	63 1/2 [1613]	66 3/4 [1695]	64 [1626]



	TITLE			MODEL VFS, FALSE BACK, EXTENDED, SERIES C
	DRN BY AJM	DATE 08/07/15	SCALE N/A	DRAWING NO.
CKD BY ML				DATE 08/07/15
				REV 04
				<b>51-80094</b>

THIS DRAWING CONTAINS PROPRIETARY DATA, UNAUTHORIZED DISCLOSURE, REPRODUCTION, OR USE IS STRICTLY PROHIBITED WITHOUT WRITTEN PERMISSION

**DO NOT SCALE DRAWING**  
DIMENSIONS AND DATA ARE SUBJECT TO CHANGE WITHOUT NOTICE.  
CONTACT FACTORY FOR CERTIFIED DRAWINGS.