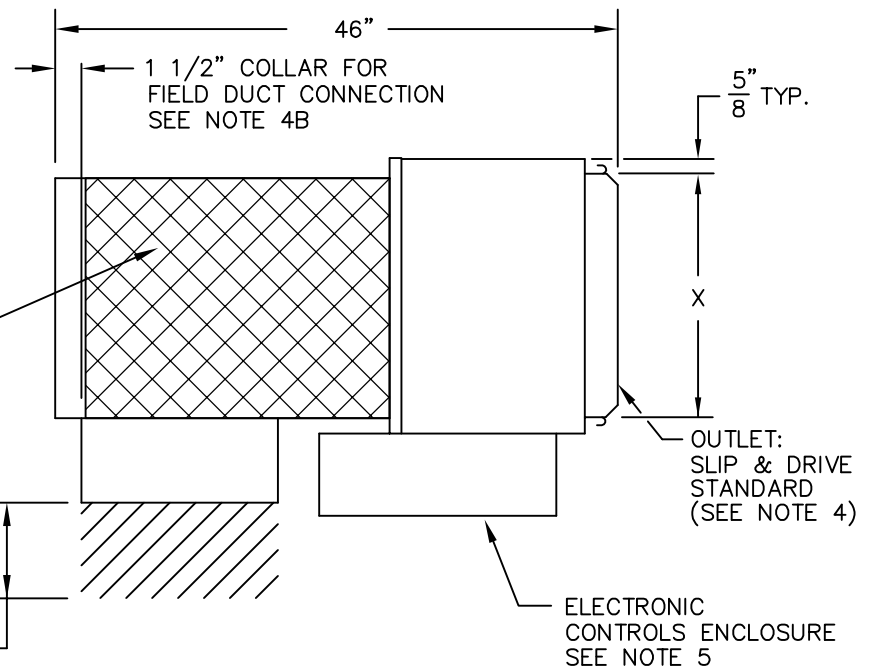


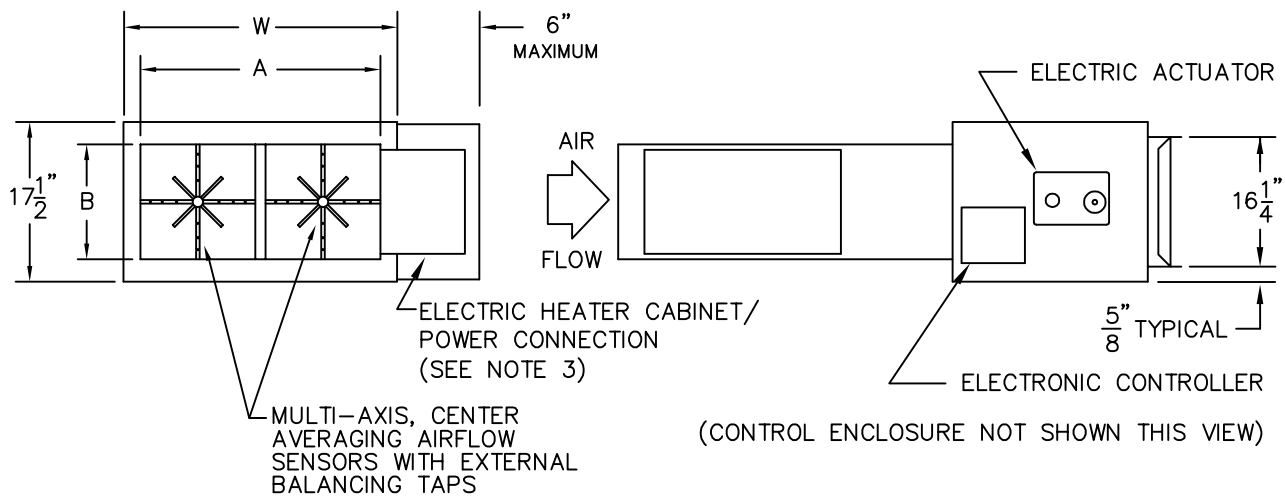
DIMENSIONAL DATA

UNIT SIZE	W	A	B	X
19	30 [762]	28-1/4 [718]	13-7/8 [352]	28-3/4 [730]
22	34 [864]	32-1/4 [819]	15-7/8 [403]	32-3/4 [832]



DOWNSTREAM P_s MUST BE 0.07 INCHES WATER GAUGE OR GREATER.

SEE NOTE 5



CONSTRUCTION NOTES:

1. MATERIAL: Galvanized steel; Casing -22 gauge; Air valve casing -22 gauge.
2. INSULATION: 1/2" thick fiberglass complying with NFPA 90-A and UL 181.
3. POWER CONNECTION: Units have single point power connection for compatible voltages only. Non-compatible voltages require two separate connections.
4. INSTALLATION: A) If internal insulation is utilized in the downstream ductwork, the insulation must be secured in such a manner that no raw insulation edges are exposed to the airstream.
B) Inlet & Outlet collars should be externally insulated by others (in the field) if required.
C) Minimum of 1 1/2 equivalent duct diameters of straight inlet duct required to assure proper heater operation.
5. Provide sufficient clearance to access electrical controls and comply with applicable codes and ordinances.

NOTE: All drawings subject to change without prior notice.

TITLE: MODEL SDR-EH SINGLE DUCT
TERMINAL UNIT - SZ 19 & 22
ELECTRONIC CONTROLS



DRN BY: CV	DATE: 04/15/92	SCALE: N/A	DRAWING NO. 15371
CKD BY: <i>Heink</i>	DATE: 5/2/08	REV: 05	