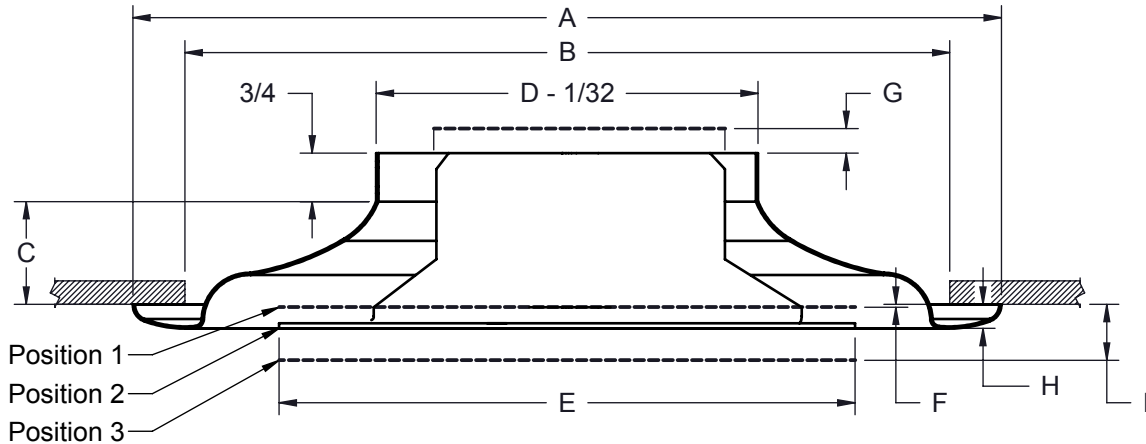


- Full directional 360° discharge pattern.
- Fixed core with three positions for vertical and horizontal throw.
- Steel construction with aluminum plaque.
- Includes standard safety cable.
- Standard finish is white paint.
- Optional anti-smudge cone available.

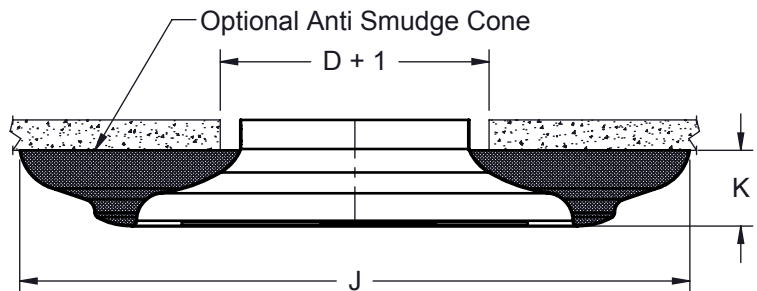


Finishes

WH - White
 AP - Aluminum Paint
 OW - Off White
 FB - Flat Black
 MP - Match Paint

Options

ASC - Anti Smudge Cone



D	A	B	C	E	F	G	H	I	J	K
Nominal Duct Size	Outside Diameter	Ceiling Opening (No ASC)	Height	Plaque	Position 1	Core Height	Position 2	Position 3	ASC Diameter	ASC Height
6	13 1/2	12	1 5/8	9	1/16	1/2	5/8	1 3/16	17 3/4	2
8	18	16	2 1/8	12	3/16	1/2	3/4	1 5/16	23 1/4	2 5/8
10	22 1/2	20	2 5/8	15	0	1/2	9/16	1 1/8	29	3 1/4
12	27	24	3 1/4	18	1/8	11/16	5/8	1 3/8	34 7/8	3 7/8
14	31 1/2	28	3 3/4	21	1/16	13/16	13/16	1 9/16	40 5/8	4 1/2

Dimensions in inches

Job: _____	Tag: _____	RT1100 Round Plaque Diffuser Steel with Aluminum Plaque
Location: _____	Submitted By: _____	
Architect: _____		
Engineer: _____		
Contractor: _____	SD - 2122	Rev: B (03/12)