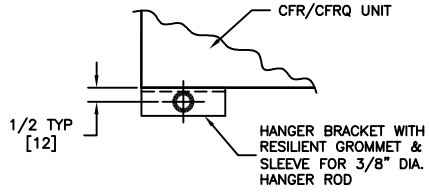
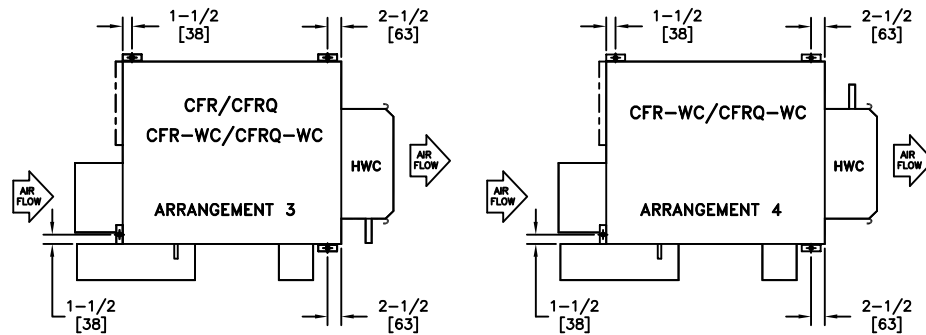
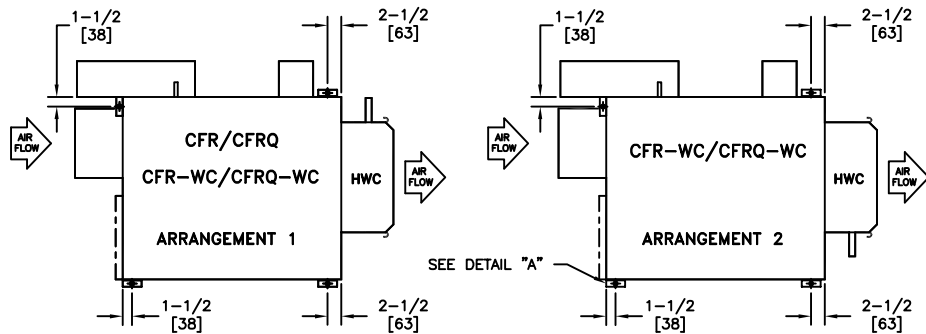


NOTES:

1. All dimensions are Inches [millimeters]. All dimensions are $\pm 1/4"$ [6mm]. Metric values are soft conversion.
2. ENVIRO-TEC will not accept responsibility for unit support based on additional field supplied suspension devices, which are sized and designed by others.



DETAIL "A"



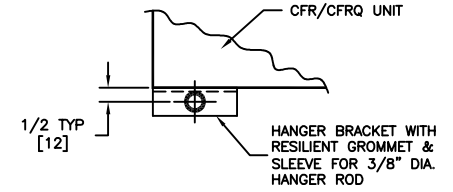
TOP VIEWS

Sht 1 of 2

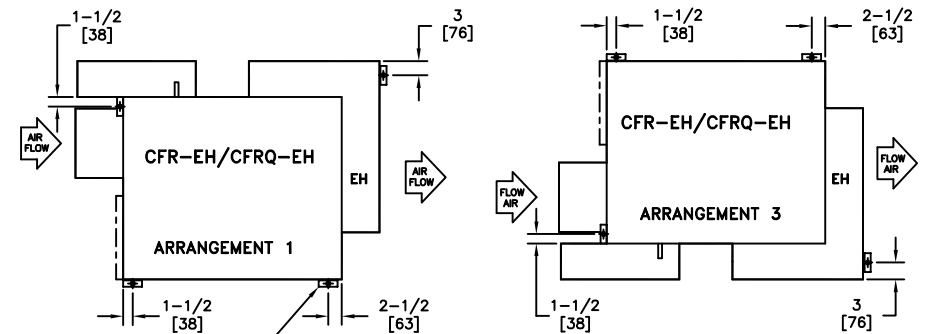
| | | | |
|--|---------------|---|-------------|
| TITLE: MODEL CFR/CFRQ SERIES FAN POWERED TERMINAL HANGER BRACKET LOCATIONS | | | |
| DRN BY: DI | DATE: 5/28/05 | SCALE: NTS | DRAWING NO. |
| CRD BY: MARK | DATE: 6/13/05 | REV: 00 | 33-80024 |
| THIS DRAWING CONTAINS PROPRIETARY DATA. UNAUTHORIZED DISCLOSURE, REPRODUCTION, OR USE IS STRICTLY PROHIBITED WITHOUT WRITTEN PERMISSION. | | DO NOT SCALE DRAWING. DIMENSIONS AND DATA ARE SUBJECT TO CHANGE WITHOUT NOTICE. CONTACT FACTORY FOR CERTIFIED DRAWINGS. | |

NOTES:

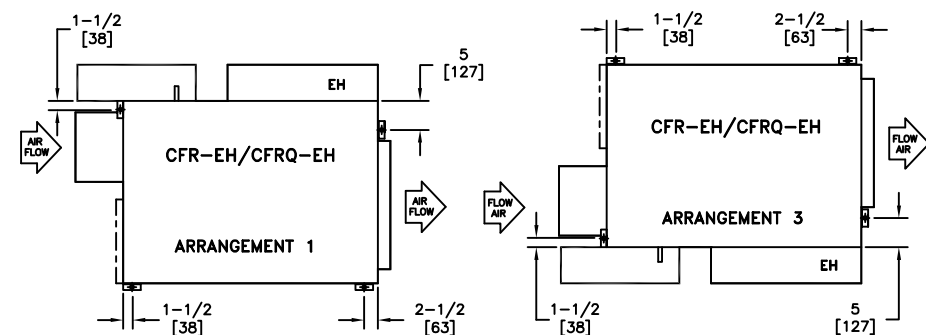
1. All dimensions are Inches [millimeters]. All dimensions are $\pm 1/4"$ [6mm]. Metric values are soft conversion.
2. ENVIRO-TEC will not accept responsibility for unit support based on additional field supplied suspension devices, which are sized and designed by others.



DETAIL "A"



SIZES 04-24



SIZES 30-44

TOP VIEWS

Sht 2 of 2

| | | | |
|--|---------------|---|-------------|
| TITLE: MODEL CFR/CFRQ SERIES FAN POWERED TERMINAL HANGER BRACKET LOCATIONS | | | |
| DRN BY: DI | DATE: 5/28/05 | SCALE: NTS | DRAWING NO. |
| CRD BY: MARK | DATE: 6/13/05 | REV: 00 | 33-80024 |
| THIS DRAWING CONTAINS PROPRIETARY DATA. UNAUTHORIZED DISCLOSURE, REPRODUCTION, OR USE IS STRICTLY PROHIBITED WITHOUT WRITTEN PERMISSION. | | DO NOT SCALE DRAWING. DIMENSIONS AND DATA ARE SUBJECT TO CHANGE WITHOUT NOTICE. CONTACT FACTORY FOR CERTIFIED DRAWINGS. | |