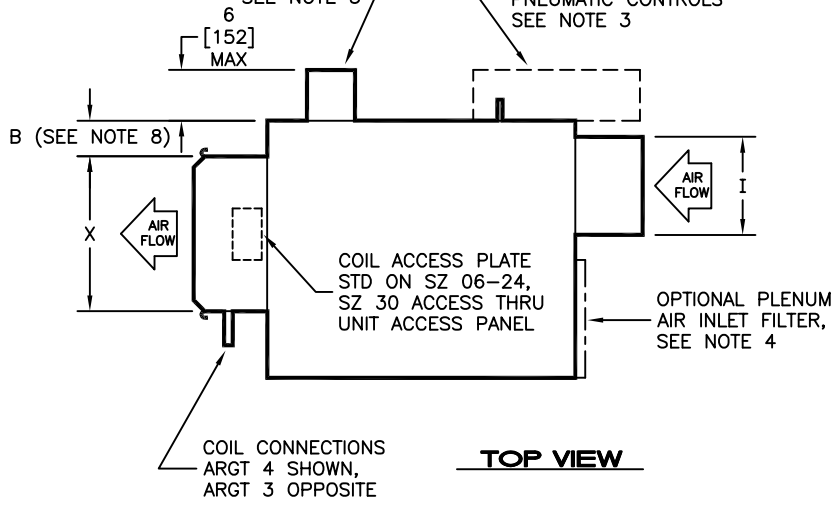


ELECTRICAL ENCLOSURE, STANDARD ON UNITS WITH PNEUMATIC CONTROLS, OPTIONAL WITH FIELD INSTALLED ELECTRONIC CONTROLS, SEE NOTE 3

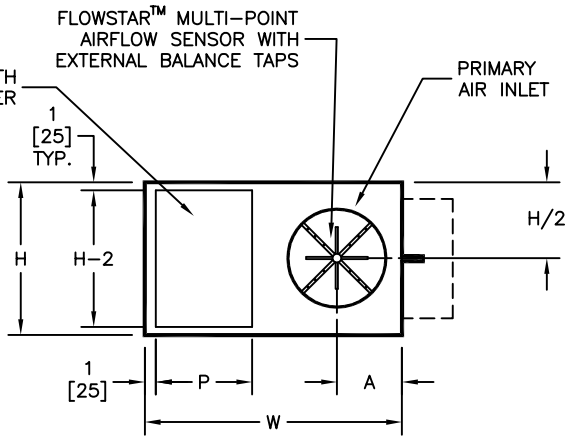
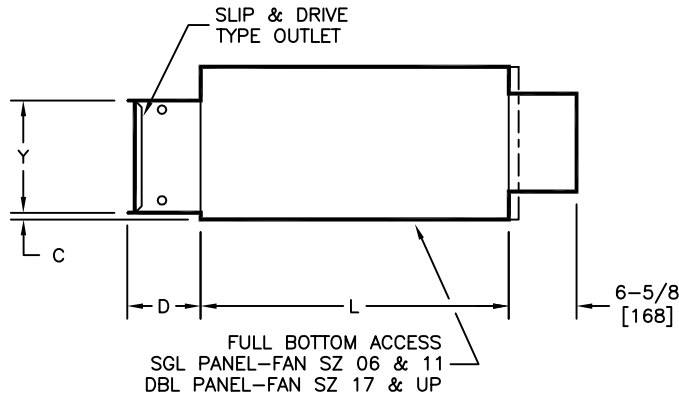
ELECTRONIC ENCLOSURE TYPICAL ON UNITS WITH ELECTRONIC CONTROLS, OPTIONAL ON UNITS WITH PNEUMATIC CONTROLS SEE NOTE 3



- NOTES:
- All dimensions are Inches [millimeters]. All dimensions are $\pm 1/4"$ [6mm]. Metric values are soft conversion.
 - All drawings subject to change without prior notice.
 - Provide sufficient clearance to permit access to controls and comply with applicable codes and ordinances.
 - 1" [25mm] thick fiberglass TAW filter. See chart for sizes.
 - Inlet and outlet collars must be externally insulated in the field "by others", if required.
 - Units with internal insulation in the downstream ductwork should have insulation secured with no raw edges exposed to the airstream.
 - See drawing 33-80015 for arrangement details.

UNIT SIZE	FILTER SIZE	
	INCHES	[MM]
0606 Thru 0811	13 X 14 X 1	[330 X 356 X 25]
1011	11 X 14 X 1	[279 X 356 X 25]
0817 Thru 1421	15 X 17 X 1	[381 X 432 X 25]
1224 & 1424	19 X 19 X 1	[483 X 483 X 25]
1230 Thru 1630	19 X 30 X 1	[483 X 762 X 25]

- OPTION NOTES:
- Double wall (DW) option increases "L" dim. by 1-1/2" [38mm], reduces "B" dim. by 7/8" [22mm], and reduces inlet and discharge collar length by 3/4" [19mm].
 - Low temperature (LT) option provides a thermally isolated primary inlet. Inlet collar length is reduced by 3/4" [19mm].
 - Low temperature (LT) option is suitable for 46° F min. primary air and max. ambient conditions of 78° F and 60% RH.



INLET END VIEW
(Filter not shown this view)

DIMENSIONS - In [mm]

UNIT SIZE	H	W	L	X	Y	A	B	C	D	P
0606, 0806, 0611, 0811	14 [356]	23-3/8 [594]	35 [889]	16 [406]	12-1/2 [318]	6 [152]	3 [76]	3/4 [19]	10 [254]	10-3/8 [264]
1011	14 [356]	23-3/8 [594]	35 [889]	16 [406]	12-1/2 [318]	7 [178]	3 [76]	3/4 [19]	10 [254]	8-3/8 [213]
0817, 1017, 1217, 0819, 1019, 1219	17 [432]	29-3/8 [746]	40 [1016]	22 [559]	12-1/2 [318]	8 [203]	3 [76]	3/4 [19]	10 [254]	12-3/8 [314]
1021, 1221, 1421	17 [432]	35-3/8 [899]	40 [1016]	22 [559]	12-1/2 [318]	9 [229]	7 [178]	3-3/4 [95]	10 [254]	12-3/8 [314]
1224, 1424	19 [483]	47-3/8 [1203]	50 [1270]	28 [711]	17-1/2 [445]	9 [229]	4 [102]	3/4 [19]	10 [254]	17 [432]
1230	19 [483]	52 [1321]	62 [1575]	40 [1016]	17-1/2 [445]	10 [254]	8-3/4 [248]	3/4 [19]	6 [152]	28 [711]
1430, 1630	19 [483]	52 [1321]	62 [1575]	40 [1016]	17-1/2 [445]	11-1/2 [292]	8-3/4 [248]	3/4 [19]	6 [152]	28 [711]

UNIT SIZE	I
06XX	5-7/8 [149]
08XX	7-7/8 [200]
10XX	9-7/8 [251]
12XX	11-7/8 [302]
14XX	13-7/8 [352]
16XX	15-7/8 [403]

UNIT SIZE:
FIRST 2 DIGITS DENOTE PRIMARY INLET SIZE, SECOND 2 DIGITS DENOTE FAN AND CASING SIZE.

TITLE: MODEL CFRQ-WC EXTRA QUIET SERIES FLOW FAN POWERED TERMINAL ALL SIZES, ARG 3 & 4

DO NOT SCALE DRAWING

NOT FOR CONSTRUCTION, CONTACT FACTORY FOR CERTIFIED DRAWINGS. DIMENSIONS AND DATA ARE SUBJECT TO CHANGE WITHOUT NOTICE.

ENVIRO-TEC

DRN BY: JSM DATE: 02/16/21 SCALE: 1=24 DRAWING NO. 33-80043

CKD BY: JSM DATE: 02/16/21 REV: A

form: a-subv_tblk.dwg rev.0