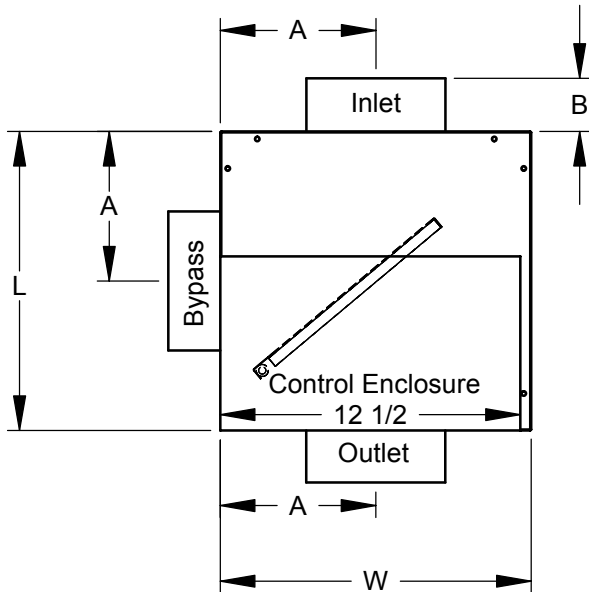
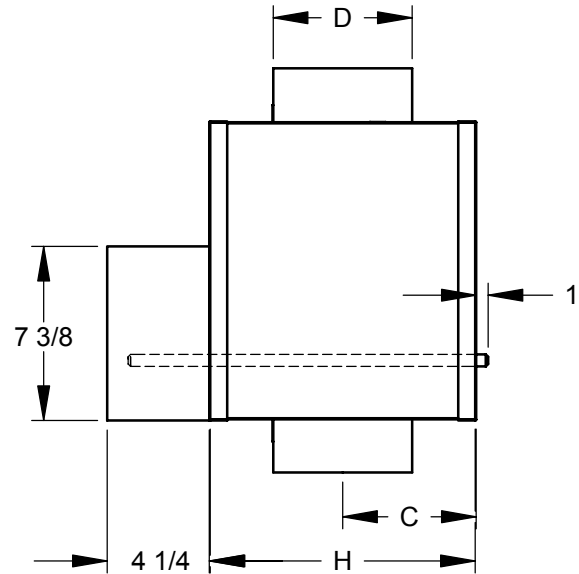


- 20 gauge galvanized steel casing
- Lined with 1/2" dual density Insulation (complies with NFPA 90A and UL 181)
- Connections are compatible with nominal rigid and flex duct

Plan View

Side View


Size	CFM (Max)	A	B		C	D	H	L	W
			w/o Man. Damper	w/ Man. Damper					
6	500	7 1/8	2	4 1/4	5 9/16	5 7/8	11 1/8	12 3/8	12 7/8
8	900	7 1/8	2	5 1/4	5 9/16	7 7/8	11 1/8	12 3/8	12 7/8
10	1300	8 1/8	2	6 1/4	6 9/16	9 7/8	13 1/8	14 3/8	14 7/8
12	2000	10 1/8	2	7 1/4	8 9/16	11 7/8	17 1/8	18 3/8	18 7/8
14	2500	10 1/8	2	8 1/4	8 9/16	13 7/8	17 1/8	18 3/8	18 7/8
16	3600	12 1/8	2	9 1/4	10 9/16	15 7/8	21 1/8	22 3/8	22 7/8
18	4400	12 1/8	2	10 1/4	10 9/16	17 7/8	21 1/8	22 3/8	22 7/8

Options

Hanger Brackets
 Manual Damper (Inlet)
 Manual Damper (Outlet)
 Manual Damper (Bypass)

Transformers

Primary Voltage: 24V 120V
 208/240V 277V

Dimensions in inches

Job: _____	Submitted By: _____		BPS Bypass Terminal Unit
Location: _____	SD-7700	Rev: B (03/05)	
Architect: _____			
Engineer: _____			
Contractor: _____			