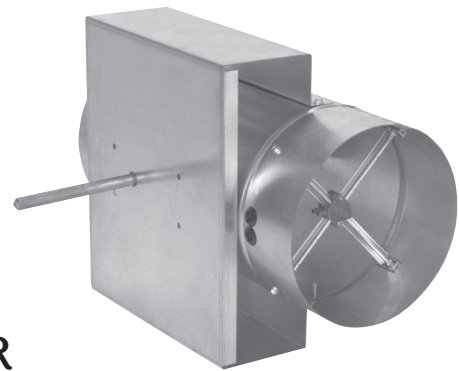


SINGLE DUCT ROUND TERMINAL UNIT



SDR

BASIC FEATURES

The SDR single duct air terminal features a primary inlet with an integral damper and a round discharge. The patented Tuttle & Bailey Flo-Cross® sensor is utilized.

OPERATING PRINCIPLE

The Tuttle & Bailey SDR is the basic offering for cooling only temperature control. The SDR operates on the principle that as the space cooling load is satisfied, the primary damper modulates closed to restrict air flow to the space so that a constant space temperature is maintained. As the space cooling load is further satisfied, the SDR closes to a pre-set minimum flow, which is usually determined by the minimum level of ventilation required in the space. In addition, the SDR can also be used at full shut-off for those rare applications where minimum ventilation requirements are not necessary. Should supplemental heat be required, duct mounted heat sources supplied by others can be used.

SOUND

The goal in designing VAV systems is to operate air terminals at low pressures and air flows, while still satisfying the design conditions. The SDR is designed for quiet performance at typical operating condition

APPLICATIONS

The basic SDR single duct air terminal is designed for interior zones where no reheat is required.



FEATURES

- Patented Flo-Cross® Sensor which features 24 point upstream and downstream sensing with center averaging chambers and exclusive amplification wings (Patent # 4,453,419)
- A wide variety of sizes (9) results in a total flow range of 75 to 4000 CFM
- Heavy duty 22 gauge casing construction
- Industry standard round inlet collars sized to accept either flexible or rigid duct
- Round damper blade constructed of elastomeric gasket sandwiched between two heavy-duty 22 gauge galvanized steel plates, resulting in low air leakage
- Shaft with Delrin bearings. Shaft features a position indicator for easy identification of damper angle

OPTIONS

- SDR terminals can be furnished without controls, with electronic analog controls, with factory-mounted direct digital controls (supplied by others) or with four function pneumatic controls