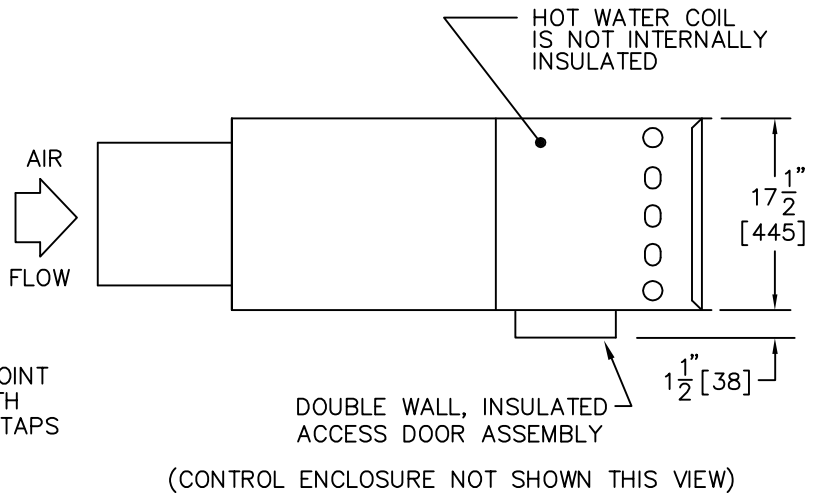
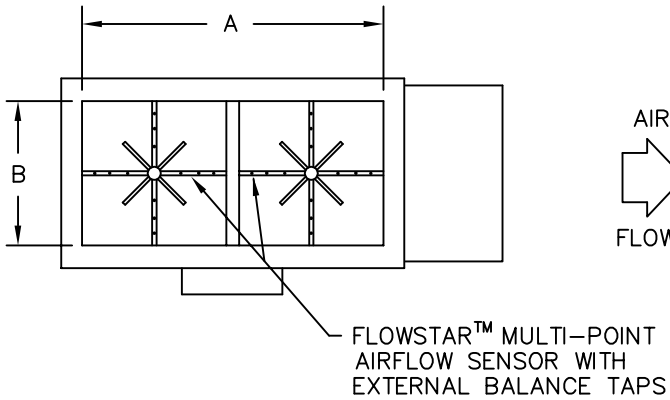
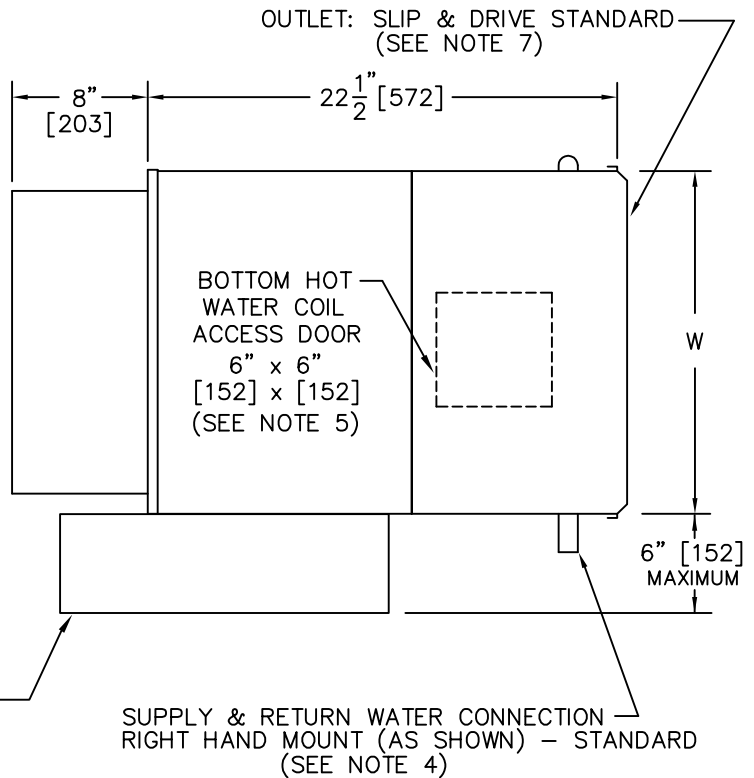


DIMENSIONAL DATA

UNIT SIZE	W	A	B
19	30" [762]	28 ¹ / ₄ " [718]	13 ⁷ / ₈ " [352]
22	34" [864]	32 ¹ / ₄ " [819]	15 ⁷ / ₈ " [403]



CONSTRUCTION NOTES:

1. All dimensions are in inches [mm]. Metric values are soft conversion. All dimensions are $\pm 1/4$ " [6mm].
2. MATERIAL: Galvanized steel; External Casing -22 gauge; Air Valve Casing -22 gauge;
3. INSULATION: 1/2" [13] thick fiberglass complying with NFPA 90-A and UL 181.
4. HOT WATER COIL: Copper tubing with aluminum fins, 10 fins per inch. Supply and Return water connections: 1 Row coil: 1/2" [13] O.D., 2 Row coil: 5/8" [16] O.D., 3 & 4 Row coil: 7/8" [22] O.D.. Coil to be externally insulated by others if required.
5. HOT WATER COIL ACCESS DOOR: Double wall, insulated 24 gauge galvanized steel construction with perimeter gasketing and zinc plated steel cam fasteners. Access door assembly is mounted to allow external insulating of hot water coil casing.
6. ELECTRONIC CONTROLS ENCLOSURE: Provide sufficient clearance to permit access to controls and comply with applicable codes and ordinances.
7. INSTALLATION: A) If internal insulation is utilized in the downstream ductwork, the insulation must be secured in such a manner that no raw insulation edges are exposed to the airstream. B) Inlet collar & hot water coil should be externally insulated by others (in the field) if required.

TITLE: MODEL SDR-WC-X
SIZES 19 & 22
RAISED ACCESS DOOR ASSEMBLY
ELECTRONIC CONTROLS



DRN BY: AWW	DATE: 9/9/02	SCALE: N/A	DRAWING NO.
CKD BY: Chris H	DATE: 5/23/06	REV: 03	19698

THIS DRAWING CONTAINS PROPRIETARY DATA.
UNAUTHORIZED DISCLOSURE, REPRODUCTION, OR USE
IS STRICTLY PROHIBITED WITHOUT WRITTEN PERMISSION

DO NOT SCALE DRAWING
DIMENSIONS AND DATA ARE SUBJECT TO CHANGE WITHOUT NOTICE.
CONTACT FACTORY FOR CERTIFIED DRAWINGS.