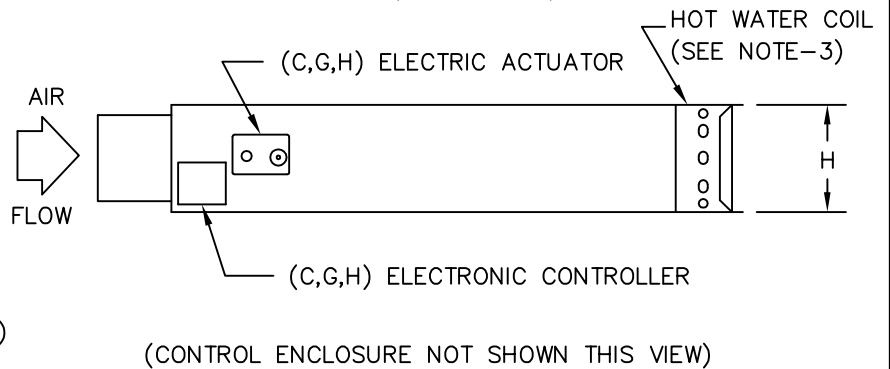
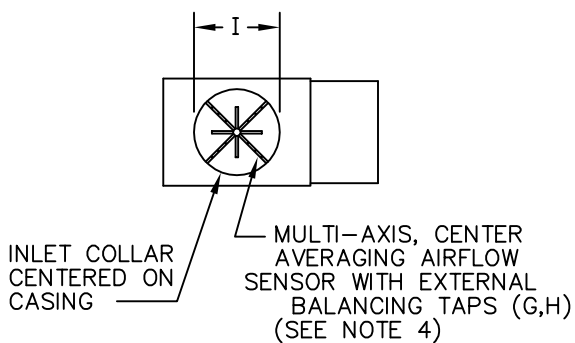
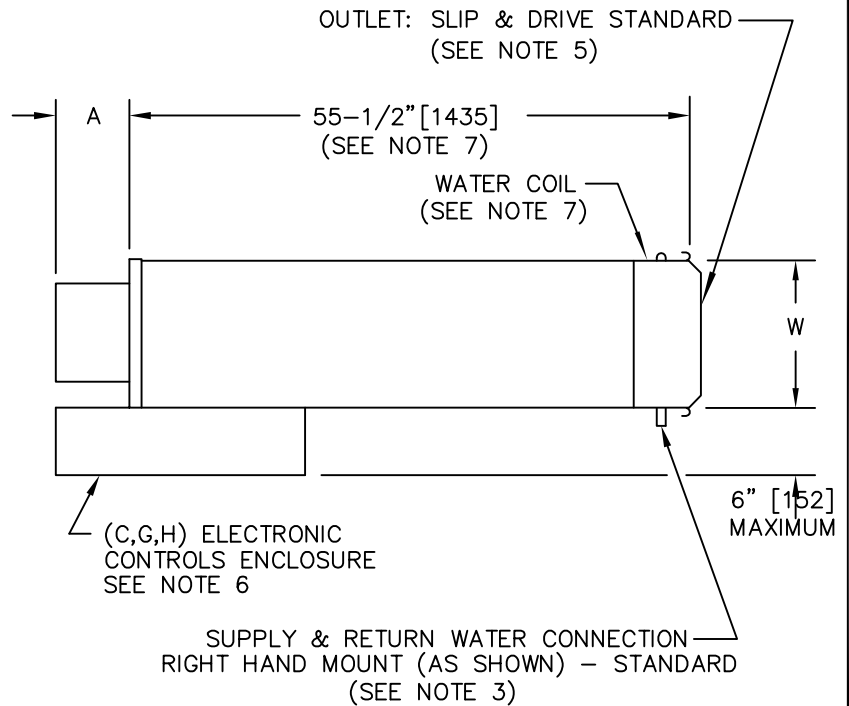


UNIT SIZE	W	H	A	I
4	10" [254]	10" [254]	10-1/2" [267]	3-7/8" [98]
5	10" [254]	10" [254]	10-1/2" [267]	4-7/8" [124]
6	10" [254]	10" [254]	6-1/2" [165]	5-7/8" [149]
8	12" [305]	10" [254]	6-1/2" [165]	7-7/8" [200]
10	14" [356]	12-1/2" [318]	6-1/2" [165]	9-7/8" [251]
12	16" [406]	15" [381]	6-1/2" [165]	11-7/8" [302]
14	20" [508]	17-1/2" [445]	6-1/2" [165]	13-7/8" [352]
16	24" [610]	17-1/2" [445]	6-1/2" [165]	15-7/8" [403]



CONSTRUCTION NOTES:

- MATERIAL: Galvanized steel; Casing -22 gauge; Air valve casing -22 gauge.
- INSULATION: 1/2"[13] thick fiberglass complying with NFPA 90-A and UL 181.
- HOT WATER COIL: Copper tubing with aluminum fins, 10 fins per inch. Supply and Return water connections: 1 Row coil: 1/2"[13] O.D., 2 Row coil: 5/8"[16] O.D., 3 & 4 Row coil: 7/8"[22] O.D.. Coil to be externally insulated by others if required.
- AIRFLOW SENSOR: Sizes 4 & 5 utilize single-axis linear averaging type.
- INSTALLATION: A) If internal insulation is utilized in the downstream ductwork, the insulation must be secured in such a manner that no raw insulation edges are exposed to the airstream. B) Inlet collar & hot water coil should be externally insulated by others (in the field) if required.
- Provide sufficient clearance to permit access to controls and comply with applicable codes and ordinances.
- WATER COIL: SDR-SA-WC: Length depends on coil rows and/or access type:
 Coils with:
 1-3 rows = 55-1/2" [1409]
 4 rows = 56-1/2" [1435]
 Access = 59-5/8" [1516]
 Raised Access = 63" [1600]

(C) DIGITAL CONTROLS BY OTHERS
 (G) PRESSURE INDEPENDENT - SERIES SD7000
 (H) DIRECT DIGITAL PRESSURE INDEPENDENT - SERIES SDV900

TITLE: MODEL SDR-SA-WC ELECTRONIC CONTROLS			
DRN BY: WRG	DATE: 10/13/21	SCALE: NTS	DRAWING NO.
CKD BY: Chris H	DATE: 04/17/13	REV: A	15260
THIS DRAWING CONTAINS PROPRIETARY DATA. UNAUTHORIZED DISCLOSURE, REPRODUCTION, OR USE IS STRICTLY PROHIBITED WITHOUT WRITTEN PERMISSION		DO NOT SCALE DRAWING. DIMENSIONS AND DATA ARE SUBJECT TO CHANGE WITHOUT NOTICE. CONTACT FACTORY FOR CERTIFIED DRAWINGS.	