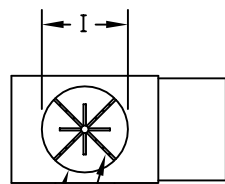
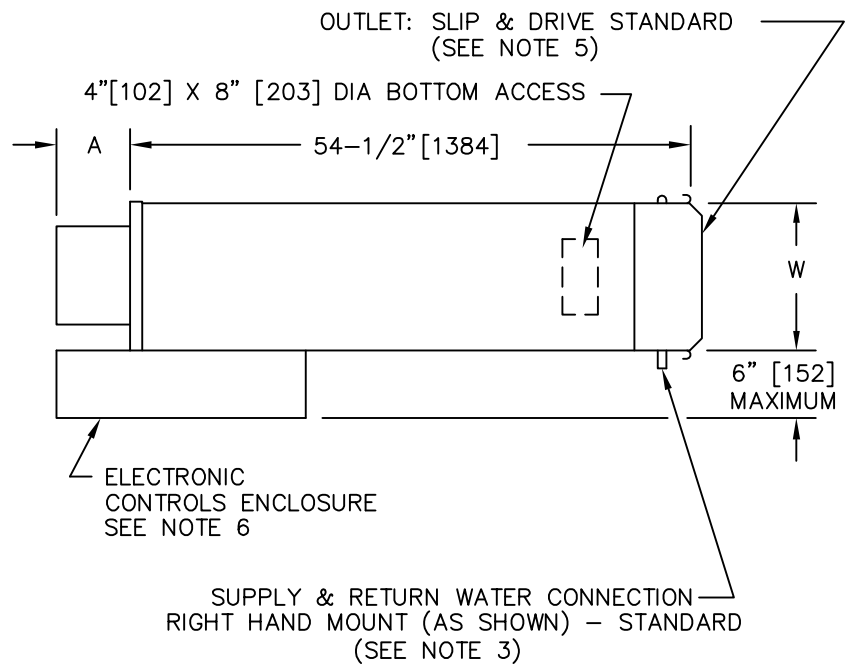
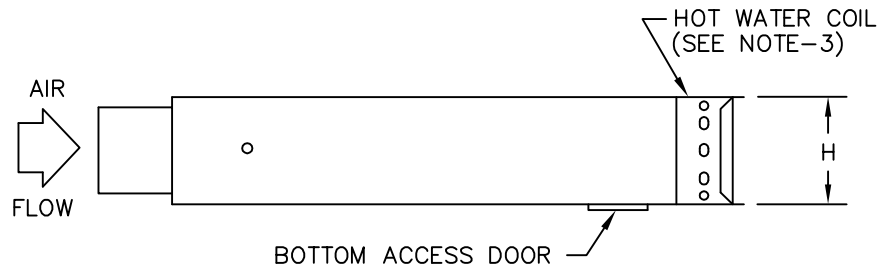


UNIT SIZE	W	H	A	I
4	10" [254]	10" [254]	10-1/2" [267]	3-7/8" [98]
5	10" [254]	10" [254]	10-1/2" [267]	4-7/8" [124]
6	10" [254]	10" [254]	6-1/2" [165]	5-7/8" [149]
8	12" [305]	10" [254]	6-1/2" [165]	7-7/8" [200]
10	14" [356]	12-1/2" [318]	6-1/2" [165]	9-7/8" [251]
12	16" [406]	15" [381]	6-1/2" [165]	11-7/8" [302]
14	20" [508]	17-1/2" [445]	6-1/2" [165]	13-7/8" [352]
16	24" [610]	17-1/2" [445]	6-1/2" [165]	15-7/8" [403]



INLET COLLAR CENTERED ON CASING
 MULTI-AXIS, CENTER AVERAGING AIRFLOW SENSOR WITH EXTERNAL BALANCING TAPS (SEE NOTE 4)



(CONTROL ENCLOSURE NOT SHOWN THIS VIEW)

1. MATERIAL: Galvanized steel; Casing -22 gauge; Air valve casing -22 gauge.
2. INSULATION: 1/2"[13] thick fiberglass complying with NFPA 90-A and UL 181.
3. HOT WATER COIL: Copper tubing with aluminum fins, 10 fins per inch. Supply and Return water connections: 1 Row coil: 1/2"[13] O.D., 2 Row coil: 5/8"[16] O.D., 3 & 4 Row coil: 7/8"[22] O.D.. Coil to be externally insulated by others if required.
4. AIRFLOW SENSOR: Sizes 4 & 5 utilize single-axis linear averaging type.
5. INSTALLATION: A) If internal insulation is utilized in the downstream ductwork, the insulation must be secured in such a manner that no raw insulation edges are exposed to the airstream.
 B) Inlet collar & hot water coil should be externally insulated by others (in the field) if required.
6. Provide sufficient clearance to permit access to controls and comply with applicable codes and ordinances.

TITLE: MODEL SDR-SA-WC-AD
 ELECTRONIC CONTROLS
 SIZES 04-16
 COIL ACCESS IN TERMINAL CASING



DRN BY: SM	DATE: 10/06/03	SCALE: N/A	DRAWING NO.
CKD BY: DPB	DATE: 12/13/12	REV: 02	04-80000

THIS DRAWING CONTAINS PROPRIETARY DATA. UNAUTHORIZED DISCLOSURE, REPRODUCTION, OR USE IS STRICTLY PROHIBITED WITHOUT WRITTEN PERMISSION.

DO NOT SCALE DRAWING. DIMENSIONS AND DATA ARE SUBJECT TO CHANGE WITHOUT NOTICE. CONTACT FACTORY FOR CERTIFIED DRAWINGS.