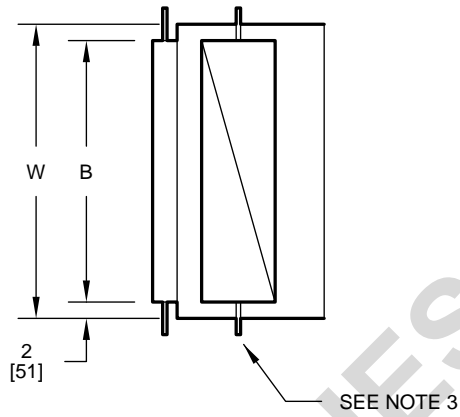
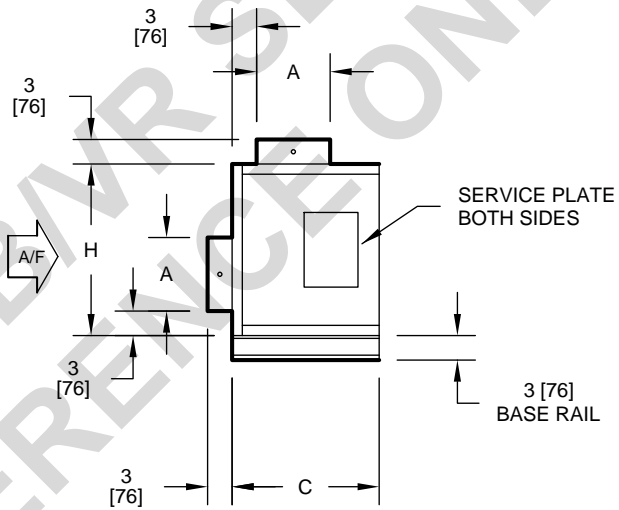


**NOTES:**

1. All dimensions are Inches [millimeters].  
All dimensions  $\pm 1/4"$  [6mm].  
Metric values are soft conversion.
2. All drawings subject to change without prior notice.
3. Damper drive rods are external, located on both sides of unit.
4. Damper blade-to-blade linkage may extend into inlet ducts.
5. Mixing box is located at inlet to standard filter rack.
6. Base rail shown is required on VMR units. See drawing BR-001 for base rail details.
7. Parallel blade operation is standard. Unit sizes 08 thru 16 have single blade dampers.



**TOP VIEWS**



**SIDE VIEWS**

**DIMENSIONS - In [mm]**

UNIT SIZE	H	W	A	B	C
08	19 [483]	26 [660]	6 [152]	22 [559]	12 [305]
12	21 [533]	26 [660]	9 [229]	22 [559]	15 [381]
16	25 [635]	29 [737]	9 [229]	25 [635]	15 [381]
20	28 [711]	29 [737]	12 [305]	25 [635]	18 [457]
25	28 [711]	39 [991]	12 [305]	35 [889]	18 [457]
30	28 [711]	39 [991]	12 [305]	35 [889]	18 [457]

TITLE:

**MODEL VMR SERIES B  
AIR HANDLING UNIT  
STANDARD MIXING BOX**



**ENVIRO-TEC®**  
ENGINEERING FOR EXCELLENCE

DRN BY: ELP	DATE: 07/15/00	SCALE: 1=22	DRAWING NO.
CKD BY: HANK	DATE: 07/15/00	REV: 00	VMR-001