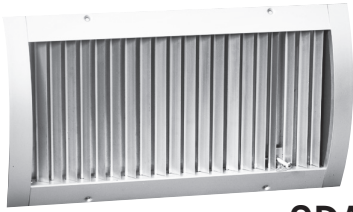


SPECIALTY PRODUCTS

Spiral Duct Grilles SD Series



SDA60-R

ALUMINUM

STEEL

The SD series (spiral duct) are designed to mount directly onto spiral duct no matter what the application. Models with radius endcaps (R) are designed with curved endcaps that allow the grilles to mount flush to the duct. Models with universal endcaps (U) are constructed with straight endcaps and gasketing to mount directly to the duct regardless of duct diameter. Both models provide a clean, low-profile appearance and reduce installation costs. These grilles are available as single and double deflection supply models. Universal endcaps accommodate multiple duct diameters, thus minimizing stocking requirements.

Model	Construction	Deflection	(Front) Face Blades
SDT50	Steel	Single	Horizontal
SDT60	Steel	Single	Vertical
SDT54	Steel	Double	Horizontal
SDT64	Steel	Double	Vertical
SDA50	Aluminum	Single	Horizontal
SDA60	Aluminum	Single	Vertical
SDA54	Aluminum	Double	Horizontal
SDA64	Aluminum	Double	Vertical
SDAPG	Aluminum	None	Perforated

FEATURES

- Radius or universal endcap design for a clean, low-profile appearance
- Aluminum or steel construction
- SDT50/SDAT50: Horizontal face blades
- SDT60/SDAT60: Vertical face blades
- SDT54/SDA54: Horizontal face blades, vertical rear blades
- SDT64/SDA64: Vertical face blades, horizontal rear blades
- SDAPG: Perforated face
- Countersunk screw holes & mounting screws
- Standard finish is white (WH)

ACCESSORIES

- Optional damper/extractor (DMPX) for balancing

Height	3	4	6	8	10
Duct Diameter (Min / Max)	6 / 36	10 / 36	12 / 36	20 / 36	24 / 36
Width (Min / Max)	10 / 48			14 / 48	16 / 48