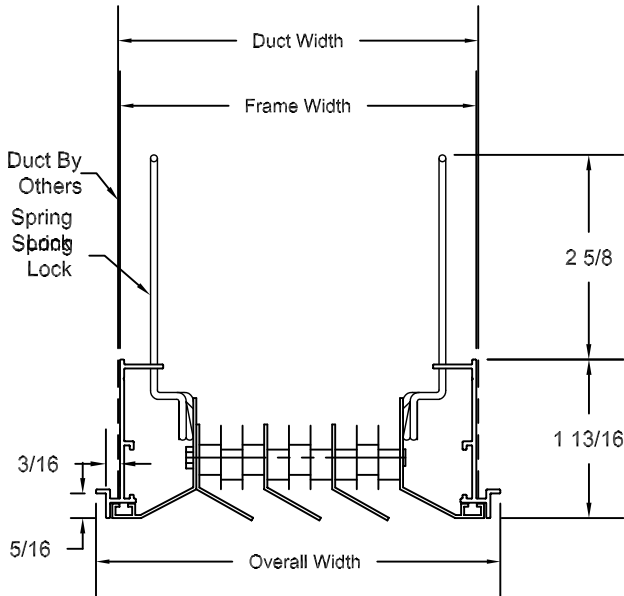
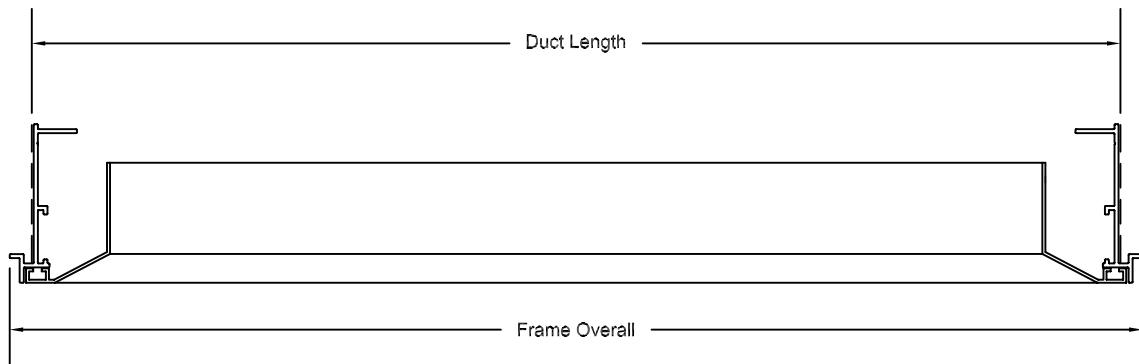




- AIR DIFFUSION VANES AT COUNTER FLOW ANGLES CREATE TURBULENT DISCHARGE FOR HIGH INDUCTION AND RAPID TEMPERATURE EQUALIZATION.
- INTEGRAL DIRECTIONAL DEFLECTORS FOR 1 OR 2-WAY HORIZONTAL PATTERNS.
- EXTRUDED ALUMINUM CONSTRUCTION.
- MAXIMUM ONE PIECE LENGTH = 72" LISTED SIZE.
- MULTIPLE SECTIONS KEYED WITH SPLICE PLATES FOR PROPER ALIGNMENT.
- AVAILABLE WITH 3 TO 36 ROWS IN 3 ROW INCREMENTS FOR LARGER CONFIGURATIONS CONTACT FACTORY.
- CORES EASILY REMOVED FROM NR OR TG FRAMES, FRAME INSTALLATION/ALIGNMENT SPACERS PROVIDED.
- SATIN ANODIZED (SA) OR WHITE (W) FINISH.

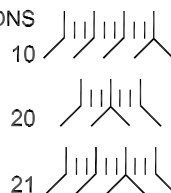


Rows	Duct Width	Frame Width	Overall Width
3	2 - 11/16	2 - 11/16	3 - 5-16
6	3 - 1/2	3 - 3/8	4 - 1/8
9	4 - 3/8	4 - 1/4	5
12	5 - 1/8	5	5 - 3/4
15	5 - 15/16	5 - 13/16	6 - 11/16
18	6 - 3/4	6 - 5/8	7 - 3/8
21	7 - 9/16	7 - 7/16	8 - 3/16
24	8 - 3/8	8 - 1/4	9
27	9 - 3/16	9 - 1/16	9 - 13/16
30	10	9 - 7/8	10 - 3/4
33	10 - 13/16	10 - 11/16	11 - 7/16
36	11 - 5/8	11 - 1/2	12 - 1/4



PATTERN DESIGNATIONS

	Frame Overall	Duct Length
NR	Listed - 3/8	Listed - 1 1/8
TG	Listed - 3/4	Listed - 1 1/2



FINISH

Satin Anodized	White
Aluminum Paint	Off-White
Flat Black	Match Paint

Job: _____
 Location: _____
 Architect: _____
 Engineer: _____
 Contractor: _____

Tag: _____
 Submitted by: _____
 SD-1523.2 07/23/2007

EH Stripline
NR and TG Frames
 Extruded Aluminum
 Directional Linear Diffuser