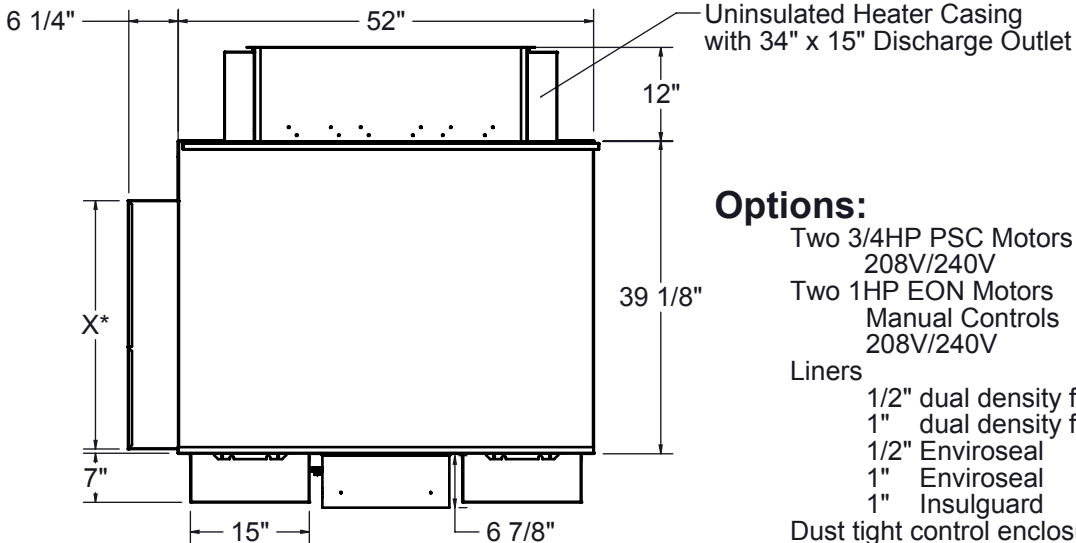


- Constructed of 20 Ga. galvanized steel
- 1/2" thick dual density fiberglass insulation meets requirements NFPA 90A and UL181
- Field adjustable fan speed control and automatic reset thermal cutout
- Easy access to internal components for maintenance via removable bottom panel
- Flo-cross sensor averages readings across all four quadrants of inlet
- 24 volt control transformer and fan interlocking relay
- Induced air inlet attenuator
- Flanged discharge connection on electric reheat coil
- Positive pressure heater air flow switch
- Power and control terminal block
- 80/20 Ni-Cr element
- **ETL listed; AHRI certified**



### Options:

Two 3/4HP PSC Motors (Standard)  
208V/240V 277V

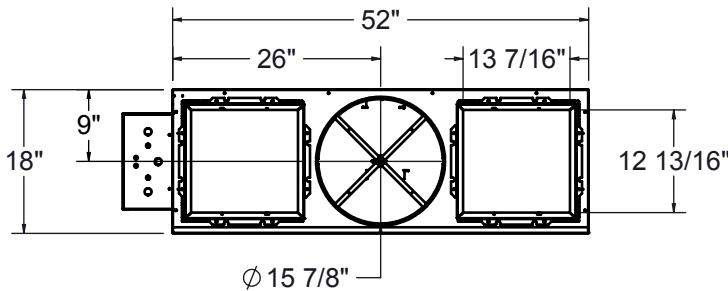
Two 1HP EON Motors  
Manual Controls Remote Controls  
208V/240V 277V

### Liners

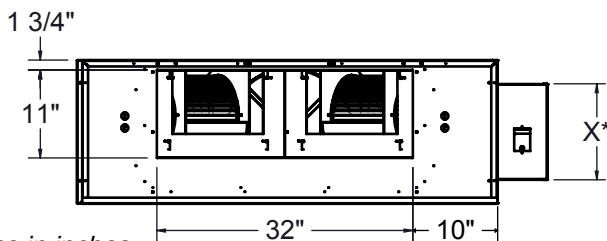
- 1/2" dual density fiberglass insulation
- 1" dual density fiberglass insulation
- 1/2" Enviroseal
- 1" Enviroseal
- 1" Insulguard

- Dust tight control enclosure
- Hangar brackets
- Motor disconnect
- Motor fusing
- SSR controlled proportional heat
- Door interlocking disconnect switch
  - Fused
  - Non-Fused
- Chicago Code
- Manual reset cutout
- Filter

INLET VIEW



DISCHARGE VIEW



\* NOTE: Digital or Analog control enclosure  
20" x 11 7/8", Pneumatic 17" x 15"

Dimensions in inches

UNIT SIZE	INLET SIZE	PSC MOTOR HP	EON MOTOR HP
7	16	3/4 (2)	1 (2)

Job: \_\_\_\_\_  
Location: \_\_\_\_\_  
Architect: \_\_\_\_\_  
Engineer: \_\_\_\_\_  
Contractor: \_\_\_\_\_

Tag: \_\_\_\_\_  
Submitted By: \_\_\_\_\_  
SD - 2188 Rev: B (03/17)

**FPS**  
**Fan-Powered Terminal Unit**  
**Series or Constant**  
**Electric Reheat, Size 7**