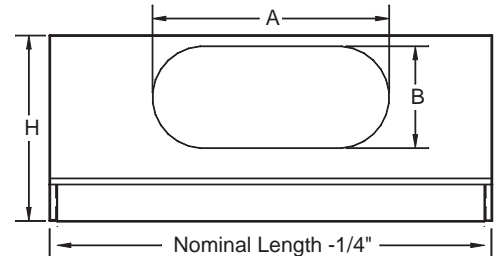
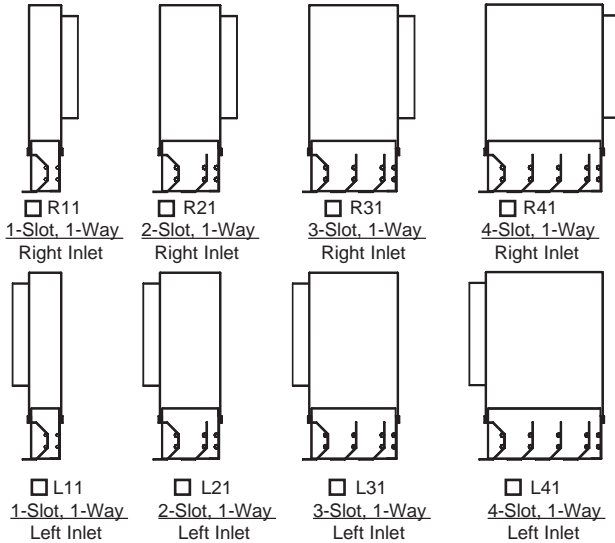


- Fixed blade pattern controller
- Removable plenum allows inlet direction to be reversed
- Detachable inlet collar allows sizes to be changed in field
- Aluminum face is painted white to match standard ceiling systems
- Optional fiber free insulation (not shown), is 3/8" thick, endcaps are not insulated
- Standard finish is white exposed surfaces
- Steel construction with aluminum face

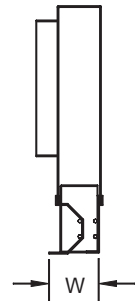
Pattern Options, 1-Way Diffuser



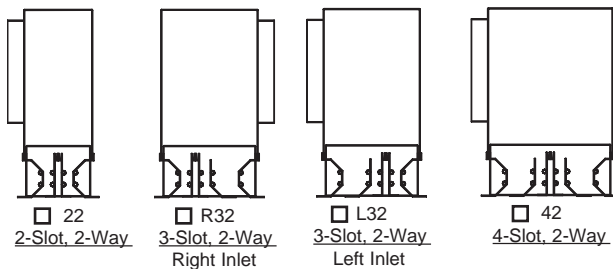
Available Lengths (L)	Available Inlet Sizes	A	B	H
24", 36" 48", 60"	6" Oval	6-1/4"	5-1/4"	10"
	8" Oval	9-3/8"	5-1/4"	10"
	10" Oval	12-1/2"	5-1/4"	10"

1-Slot Diffuser

Pattern	W
R11	2"
L11	2"
R21	3-1/2"
L21	3-1/2"
R31	5"
L31	5"
R41	6-1/2"
L41	6-1/2"

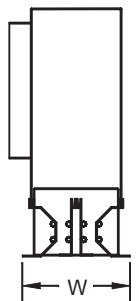


Pattern Options, 2-Way Diffuser



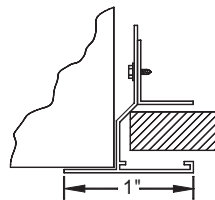
2-Slot Diffuser

Pattern	W
22	4-3/8"
R32	5-7/8"
L32	5-7/8"
42	7-3/8"

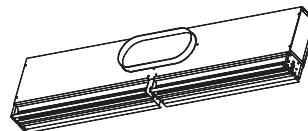


Available Accessories

The FVPS is designed for standard Lay-in T-bar ceiling systems. The optional PF plaster frame can be used to mount the diffuser in sheet rock or plaster ceilings (PF is mounted by others). Height is 1-1/2".



Plaster Frame (PF)



Cross Notch (CN)

Dimensions are in inches. Product information subject to change without notice.

PROJECT: _____
 ARCHITECT: _____
 ENGINEER: _____
 CONTRACTOR: _____
 LOCATION: _____

SUBMITTED BY: _____

DATE: 5-28-02

SD-1861

FVPS
 Plenum Slot Diffuser
 Fixed Vane