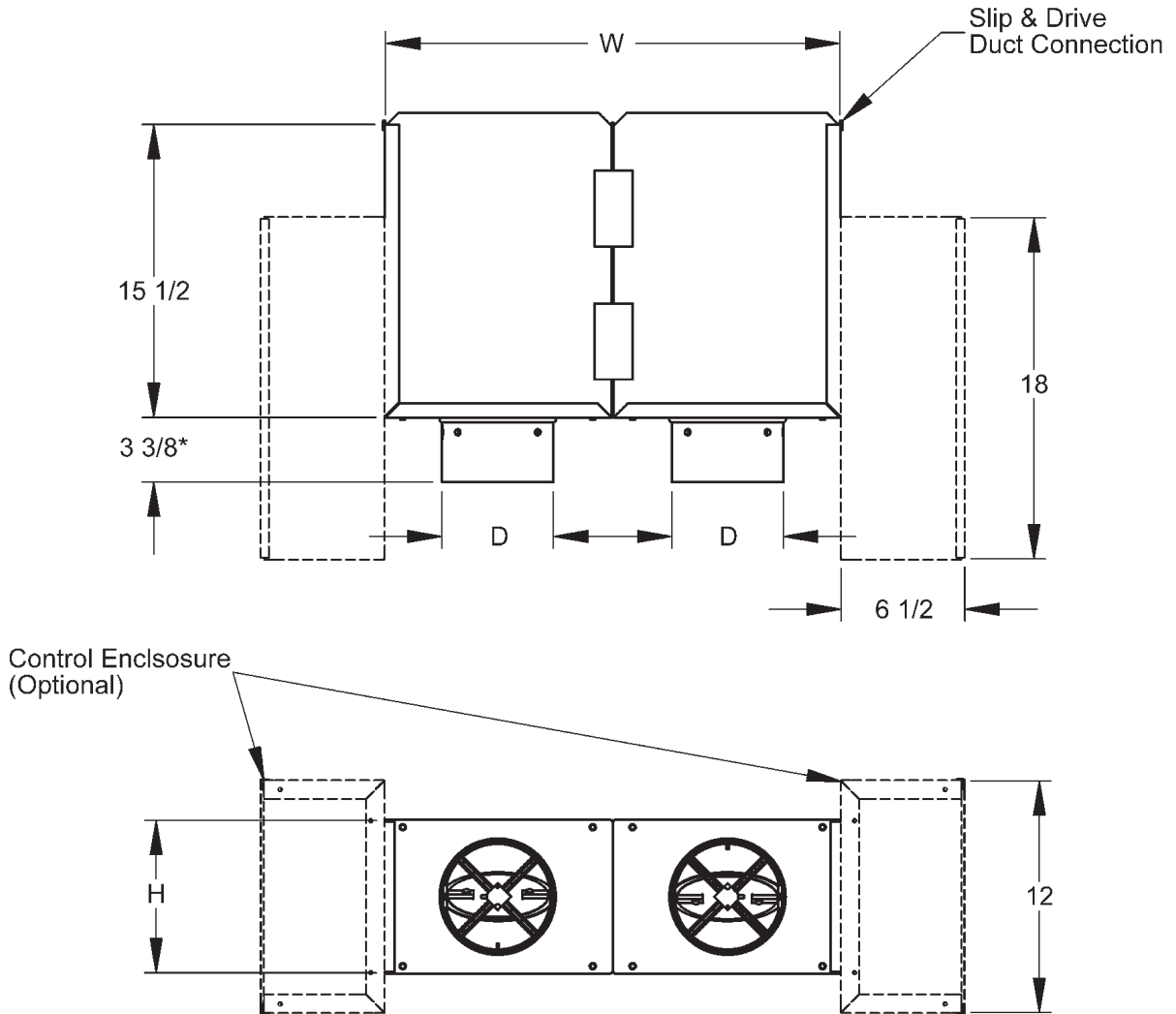


PRODUCT DIMENSIONS

DSV Basic Unit



| Unit Size | CFM Range | Height | Width | Inlet Damper |
|-----------|--------------|--------|-------|--------------|
| | Min to Max | (H) | (W) | (D) |
| 04 | 0/50 - 230 | 8 | 24 | 3-7/8 |
| 05 | 0/75 - 360 | 8 | 24 | 4-7/8 |
| 06 | 0/100 - 520 | 8 | 24 | 5-7/8 |
| 07 | 0/150 - 710 | 10 | 24 | 6-7/8 |
| 08 | 0/200 - 925 | 10 | 24 | 7-7/8 |
| 10 | 0/300 - 1450 | 12-1/2 | 28 | 9-7/8 |
| 12 | 0450 - 2100 | 15 | 32 | 11-7/8 |
| 14 | 0/600 - 2900 | 17-1/2 | 40 | 13-7/8 |
| 16 | 0/800 - 3700 | 18 | 48 | 15-7/8 |

*5-3/8" for sizes 4 and 5

