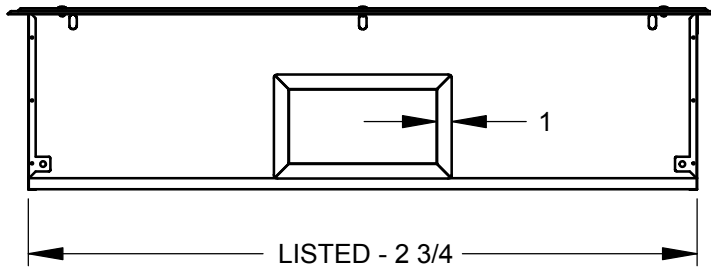
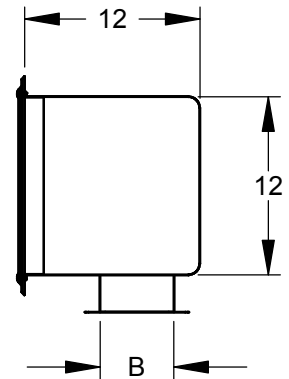
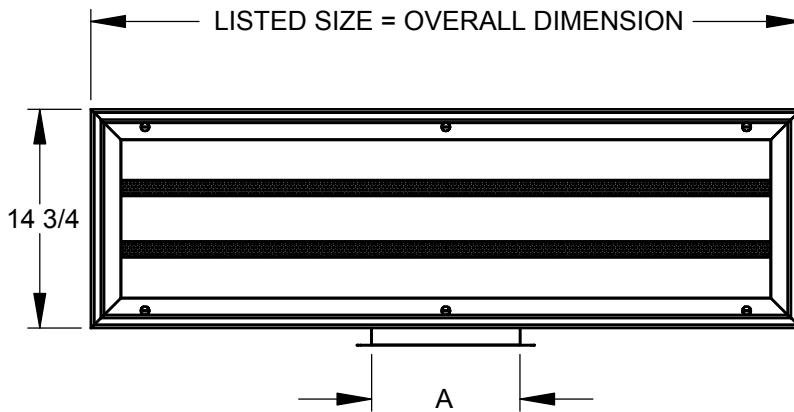


- 304 stainless steel construction (316 SS and aluminum optional)
- Two, 1" perforated slots provide continuous curtain of air around work area
- Perforated slots have 3/32" diameter holes on 1/4" staggered centers
- Removable faceplate attached by stainless steel 1/4 turn fasteners
- Safety cables included to prevent accidental dropping of removable faceplate
- Plenum includes rounded corners for ease of cleaning
- Maximum one-piece length of 84" (larger sizes built in multiple sections – field assembled)
- Standard finish is satin polish (SP) for stainless models and white paint for aluminum
- Optional finish for stainless models is white paint (WH)



Listed Size	Number of Inlets	Inlet Size * (A x B)
48	1	10 x 5
72	1	16 x 5
96	2	10 x 5
120	2	12 x 5
144	2	16 x 5
168	2	18 x 5
192	3	14 x 5

* - Custom inlet sizes available (Contact T&B for availability)

Options

Construction

304 Stainless Steel
316 Stainless Steel
Aluminum

Finish

Satin Polish
White Paint

Dimensions in inches

Job: _____
Location: _____
Architect: _____
Engineer: _____
Contractor: _____

Submitted By: _____

SD-1880

Rev: A (07/04)

V-Slot

**Linear Slot Diffuser for
Critical Room Applications**