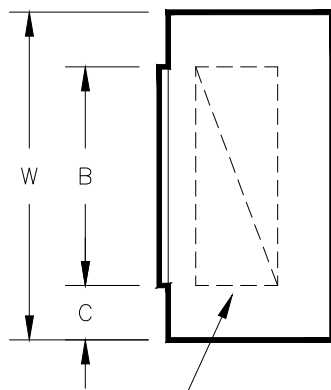
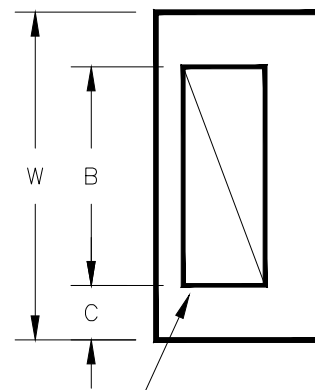


SEE NOTE 2

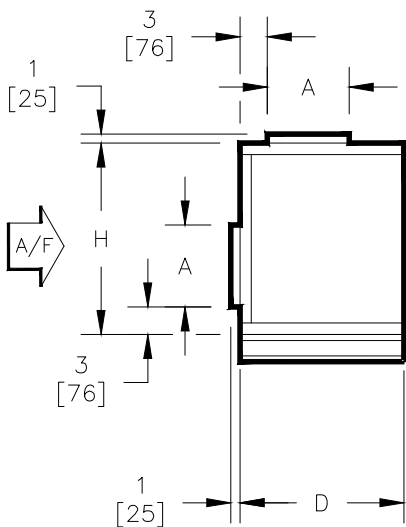


SEE NOTE 2

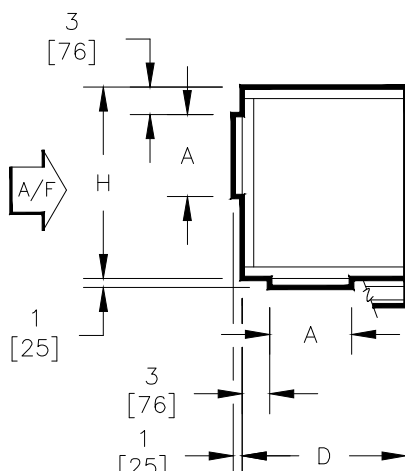


SEE NOTE 2

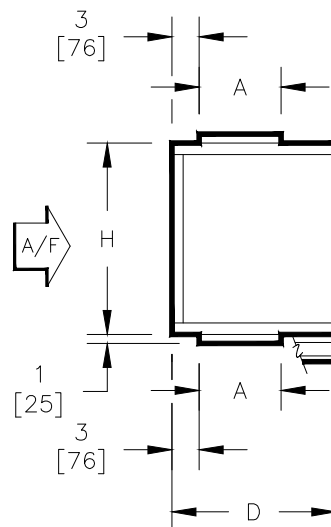
TOP VIEWS



TOP/REAR INLET



BTM/REAR INLET



TOP/BTM INLET

SIDE VIEWS

DIMENSIONS - In [mm]

- NOTES:
 1. All dimensions are Inches [millimeters]. All dimensions $\pm 1/4"$ [6mm]. Metric values are soft conversion.
 2. Damper drive rods are internal, located on both sides of unit.
 3. Mixing box includes space for standard flat filter rack.
 4. See drawing 35-80050. Base rails must be used with mixing box.

UNIT MODEL	UNIT SIZE	H	W	A	B	C	D
HDD/VDD	08	21 [533]	30 [762]	9 [229]	18 [457]	6 [152]	18 [457]
HDD/VDD	12	21 [533]	36 [914]	9 [229]	24 [610]	6 [152]	18 [457]
HDD/VDD	16	21 [533]	44 [1118]	9 [229]	30 [762]	7 [178]	18 [457]
HDD	20	22-1/2 [572]	50 [1270]	12 [305]	36 [914]	7 [178]	21 [533]
VDD	20	21 [533]	50 [1270]	12 [305]	36 [914]	7 [178]	21 [533]
HDD/VDD	30	30 [762]	59 [1499]	12 [305]	45 [1143]	7 [178]	21 [533]
HDD/VDD	40	30 [762]	68 [1727]	15 [381]	48 [1219]	10 [254]	24 [610]

TITLE:

MODEL HDD/VDD
 DIRECT DRIVE BLOWER COIL UNIT
 STANDARD MIXING BOX



ENVIRO-TEC

DRN BY: VSC	DATE: 07/13/21	SCALE: NTS	DRAWING NO.
CKD BY: BL	DATE: 07/13/21	REV: A	

35-80049

THIS DRAWING CONTAINS PROPRIETARY DATA. UNAUTHORIZED DISCLOSURE, REPRODUCTION, OR USE IS STRICTLY PROHIBITED WITHOUT WRITTEN PERMISSION

DO NOT SCALE DRAWING
 DIMENSIONS AND DATA ARE SUBJECT TO CHANGE WITHOUT NOTICE.
 CONTACT FACTORY FOR CERTIFIED DRAWINGS.