

LAYOUT REFERENCE TABLE

COIL TYPE	VALVE ACTUATOR TYPE	THERMOSTAT SERIES	AQUASTAT	FACTORY PROVIDED FLOAT SWITCH	
				NO	YES
CHANGE OVER (C/O)	PROPORTIONAL (0-10VDC)	NONE	NO	-01	-02
		NONE	YES	-03	-04
		V	YES	-05	-06
	MODULATING (FLOATING)	NONE	NO	-07	-08
		NONE	YES	-09	-10
		F	YES	-11	-12
	ON/OFF	NONE	NO	-13	-14
		NONE, T	YES	-15	-16
		D, P	YES	-17	-18
		N	YES	-19	-20
CHILLED WATER & HOTWATER (CW/HW)	PROPORTIONAL (0-10VDC)	NONE, V	-	-21	-22
	MODULATING (FLOATING)	NONE, F	-	-23	-24
	ON/OFF	NONE, T, D, P, N	-	-25	-26

L A Y O U T #

IMPORTANT

- THESE DRAWINGS SHOW FIELD CONNECTIONS TO THE FAN RELAY BOARD 2 (FRBII) FOR PROPORTIONAL (0-10VDC), MODULATING (FLOATING) AND ON/OFF ACTUATOR VALVES WITH 2-PIPE CHANGEOVER, HOT WATER AND CHILLED WATER COILS.
- FLOAT SWITCHES CAN BE OPTIONALLY FACTORY-PROVIDED.
- AQUASTAT IS INCLUDED WITH FACTORY-PROVIDED THERMOSTAT.
- FACTORY PROVIDED AQUASTAT IS OPTIONAL WHEN THERMOSTAT IS NOT FACTORY-PROVIDED.

▲ REFER NOTES

NOTES:

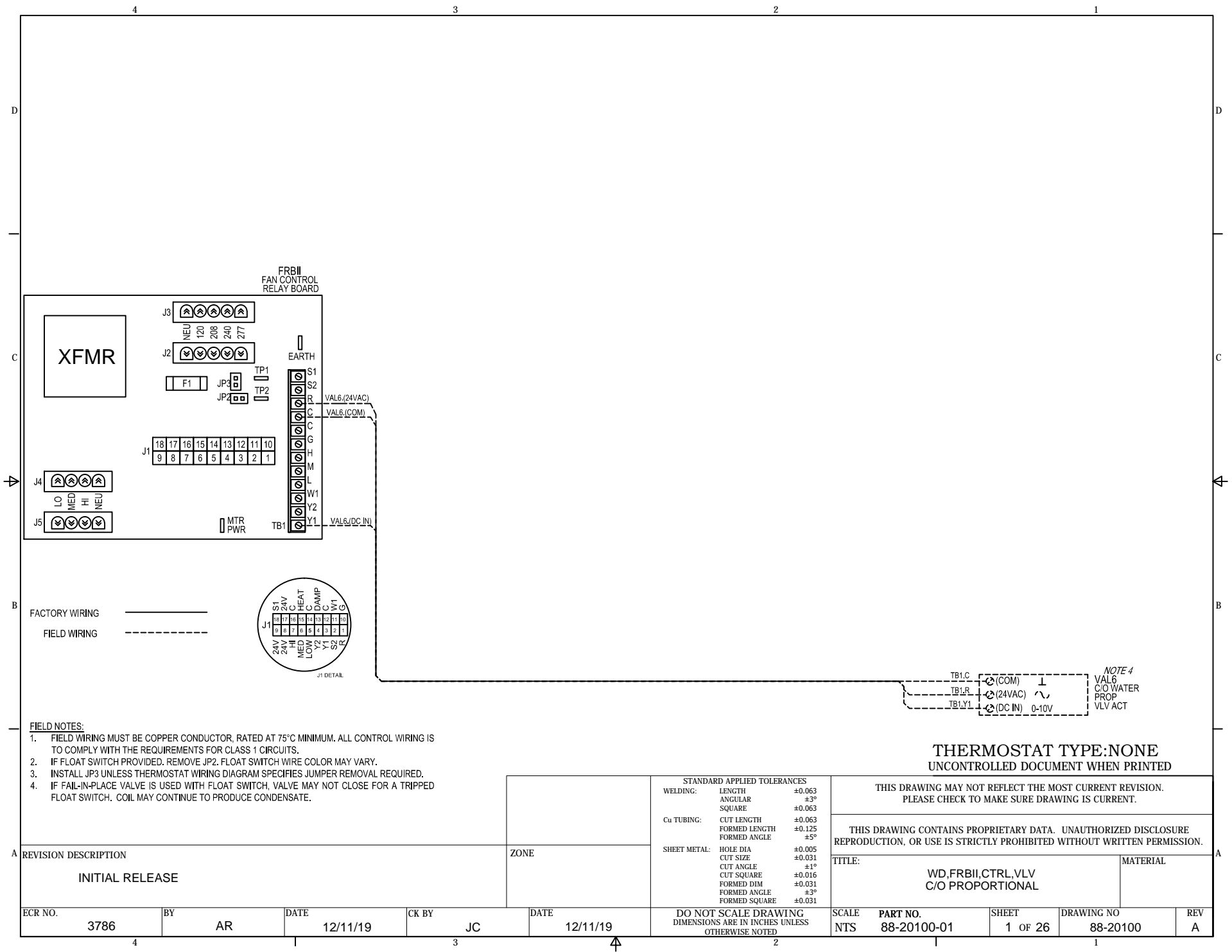
LAYOUT SELECTION INSTRUCTIONS

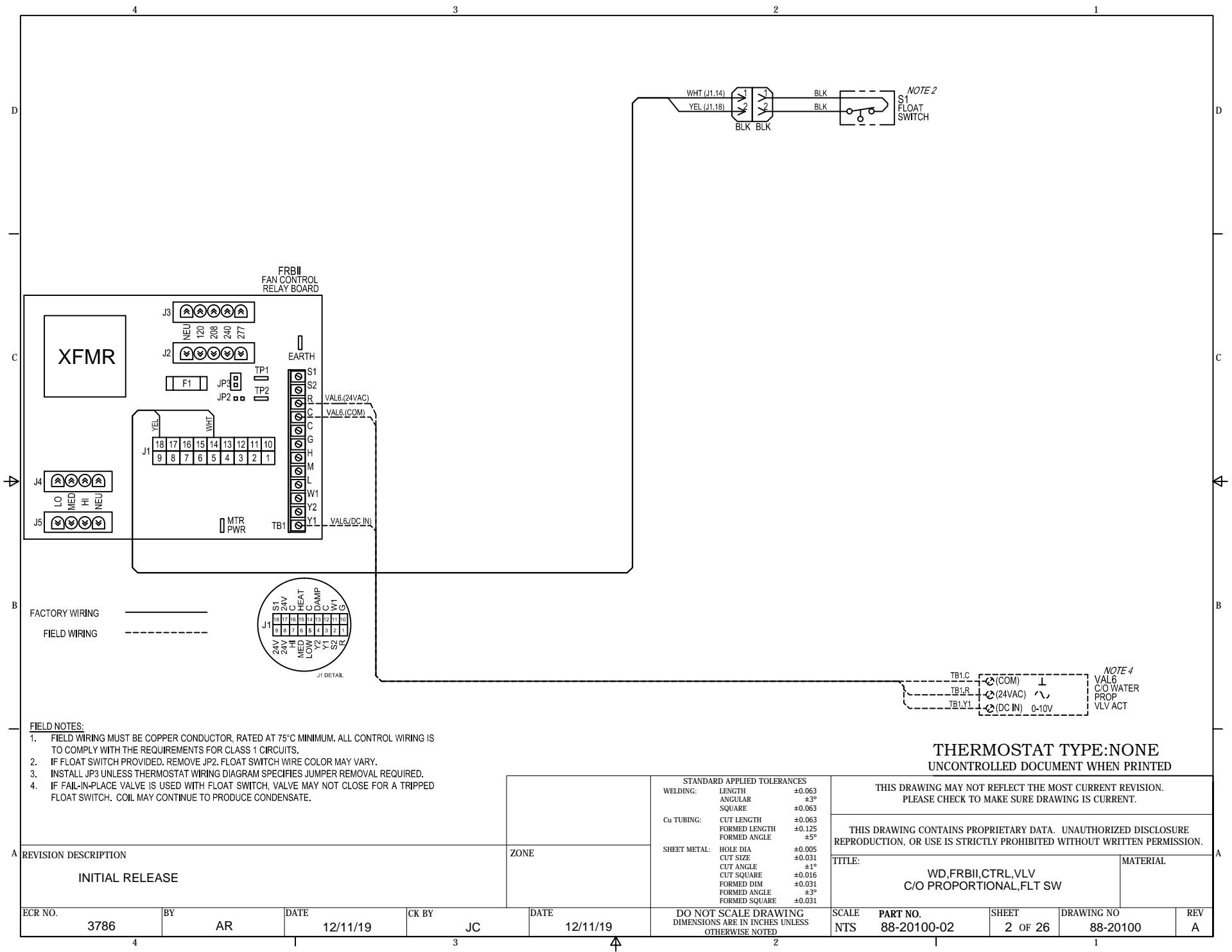
- IDENTIFY COIL TYPE & VALVE ACTUATOR TYPE.
- IDENTIFY THERMOSTAT SERIES AND AQUASTAT.
- IDENTIFY FACTORY-PROVIDED FLOAT SWITCH.
- REFER TO SHEET OF CORRESPONDING LAYOUT NUMBER.
- FOR EXAMPLE:

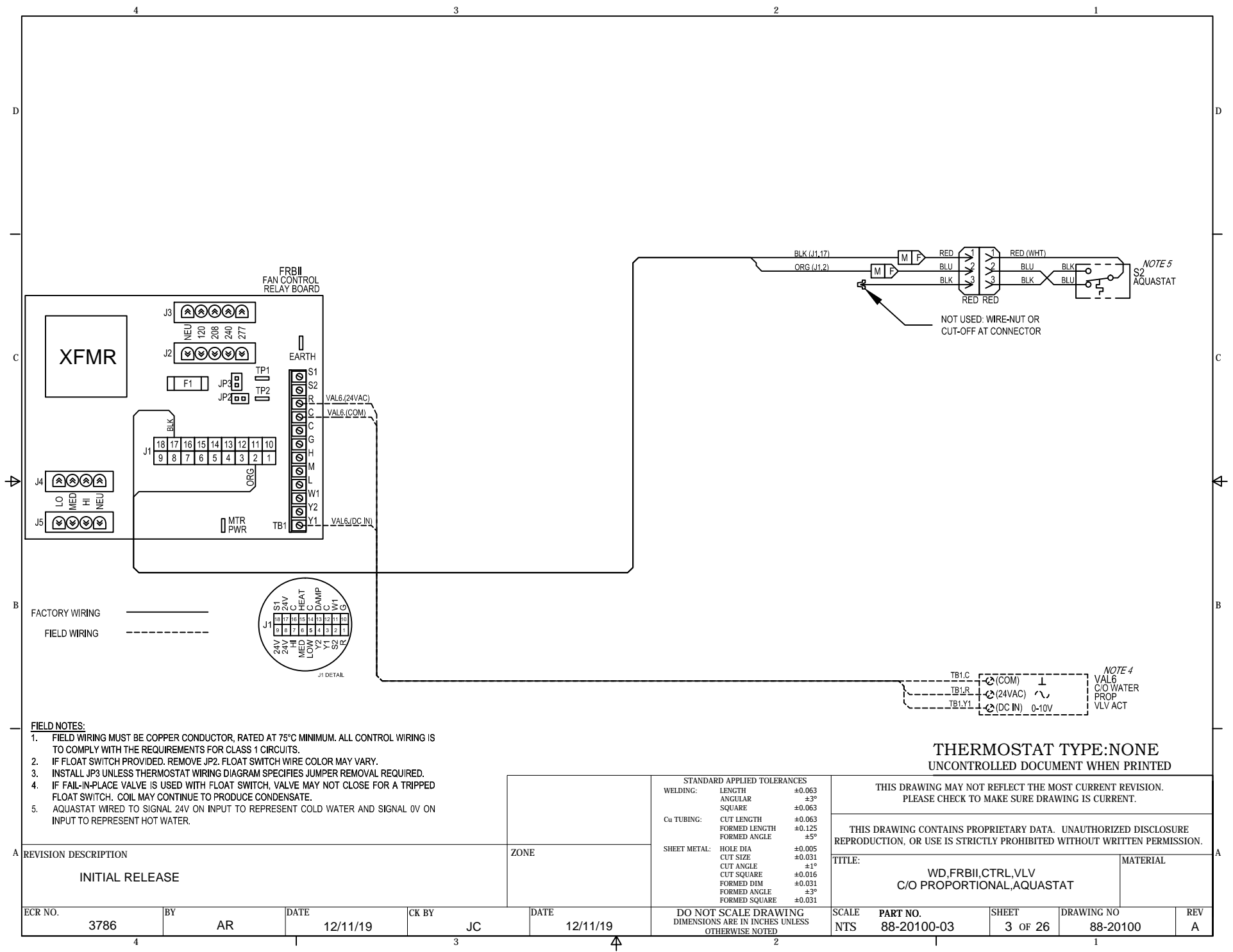
- COIL TYPE IS "CHANGE OVER" & ACTUATOR IS "MODULATING"
- THERMOSTAT SERIES IS "F" WITH "NO" AQUASTAT
- FLOAT SWITCH IS PROVIDED BY FACTORY
- THE APPROPRIATE SHEET IS 12 (88-20100-12)

UNCONTROLLED DOCUMENT WHEN PRINTED

REVISION DESCRIPTION				ZONE	STANDARD APPLIED TOLERANCES WELDING: LENGTH ±0.063 ANGULAR ±3° SQUARE ±0.063 Cu TUBING: CUT LENGTH ±0.063 FORMED LENGTH ±0.125 FORMED ANGLE ±5° SHEET METAL: HOLE DIA ±0.005 CUT SIZE ±0.031 CUT ANGLE ±1° CUT SQUARE ±0.016 FORMED DIM ±0.031 FORMED ANGLE ±3° FORMED SQUARE ±0.031	THIS DRAWING MAY NOT REFLECT THE MOST CURRENT REVISION. PLEASE CHECK TO MAKE SURE DRAWING IS CURRENT.		THIS DRAWING CONTAINS PROPRIETARY DATA. UNAUTHORIZED DISCLOSURE REPRODUCTION, OR USE IS STRICTLY PROHIBITED WITHOUT WRITTEN PERMISSION.		
						TITLE: WD,FRBII,CTRL.VLV TABLE OF CONTENTS		MATERIAL		
ECR NO.	BY	DATE	CK BY	DATE	DO NOT SCALE DRAWING DIMENSIONS ARE IN INCHES UNLESS OTHERWISE NOTED	SCALE	PART NO.	SHEET	DRAWING NO	REV
3786	AR	12/11/19	JC	12/11/19		NTS		- OF 26	88-20100	A







FIELD NOTES:

1. FIELD WIRING MUST BE COPPER CONDUCTOR, RATED AT 75°C MINIMUM. ALL CONTROL WIRING IS TO COMPLY WITH THE REQUIREMENTS FOR CLASS 1 CIRCUITS.
2. IF FLOAT SWITCH PROVIDED. REMOVE JP2. FLOAT SWITCH WIRE COLOR MAY VARY.
3. INSTALL JP3 UNLESS THERMOSTAT WIRING DIAGRAM SPECIFIES JUMPER REMOVAL REQUIRED.
4. IF FAIL-IN-PLACE VALVE IS USED WITH FLOAT SWITCH, VALVE MAY NOT CLOSE FOR A TRIPPED FLOAT SWITCH. COIL MAY CONTINUE TO PRODUCE CONDENSATE.
5. AQUASTAT WIRE TO SIGNAL 24V ON INPUT TO REPRESENT COLD WATER AND SIGNAL 0V ON INPUT TO REPRESENT HOT WATER.

REVISION DESCRIPTION

INITIAL RELEASE

ZONE

STANDARD APPLIED TOLERANCES		
WELDING:	LENGTH	±0.063
	ANGULAR	±3°
	SQUARE	±0.063
Cu TUBING:	CUT LENGTH	±0.063
	FORMED LENGTH	±0.125
	FORMED ANGLE	±5°
	FORMED DIM	±0.031
SHEET METAL:	HOLE DIA	±0.005
	CUT SIZE	±0.031
	CUT ANGLE	±1°
	CUT SQUARE	±0.016
	FORMED DIM	±0.031
	FORMED ANGLE	±3°

DO NOT SCALE DRAWING
DIMENSIONS ARE IN INCHES UNLESS
OTHERWISE NOTED

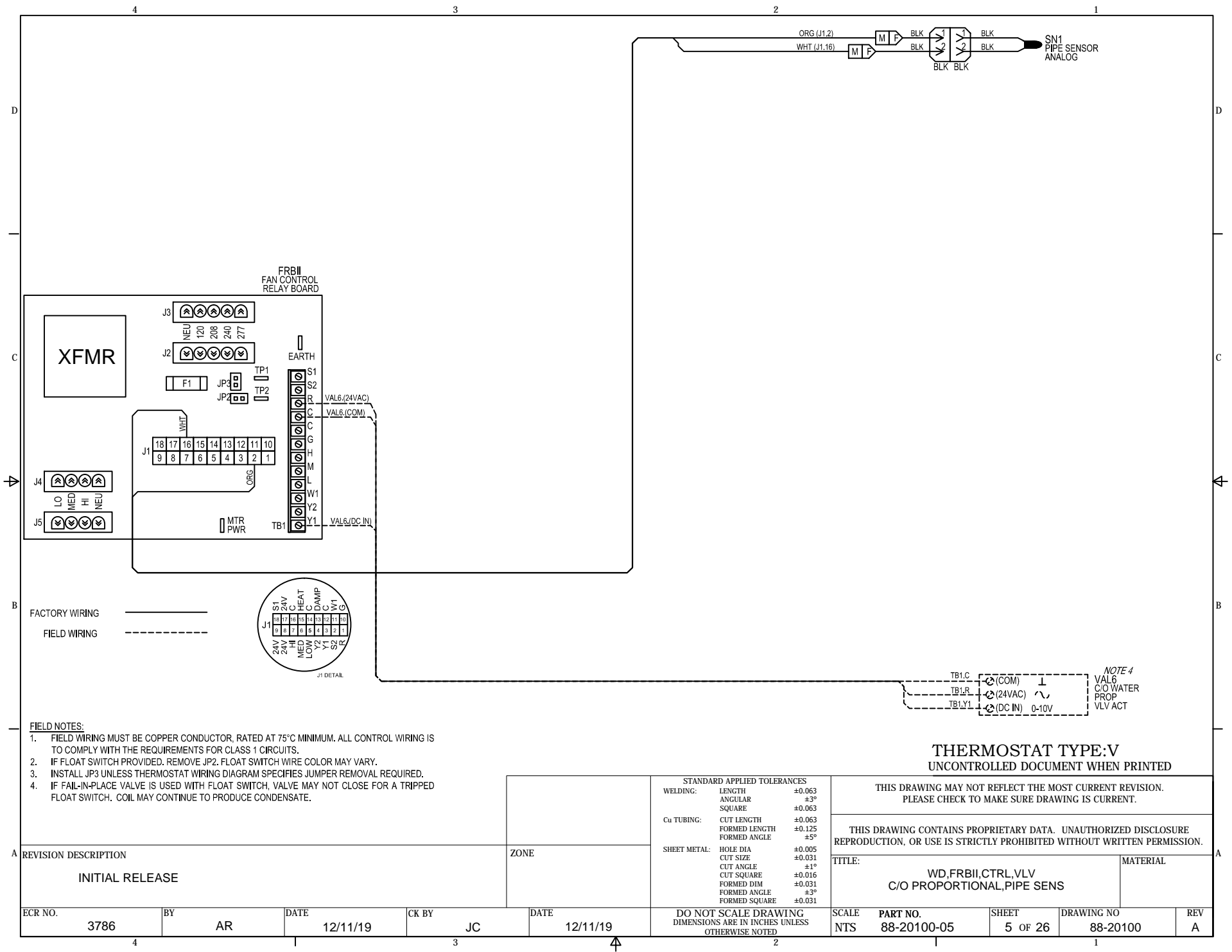
THIS DRAWING MAY NOT REFLECT THE MOST CURRENT REVISION.
PLEASE CHECK TO MAKE SURE DRAWING IS CURRENT.

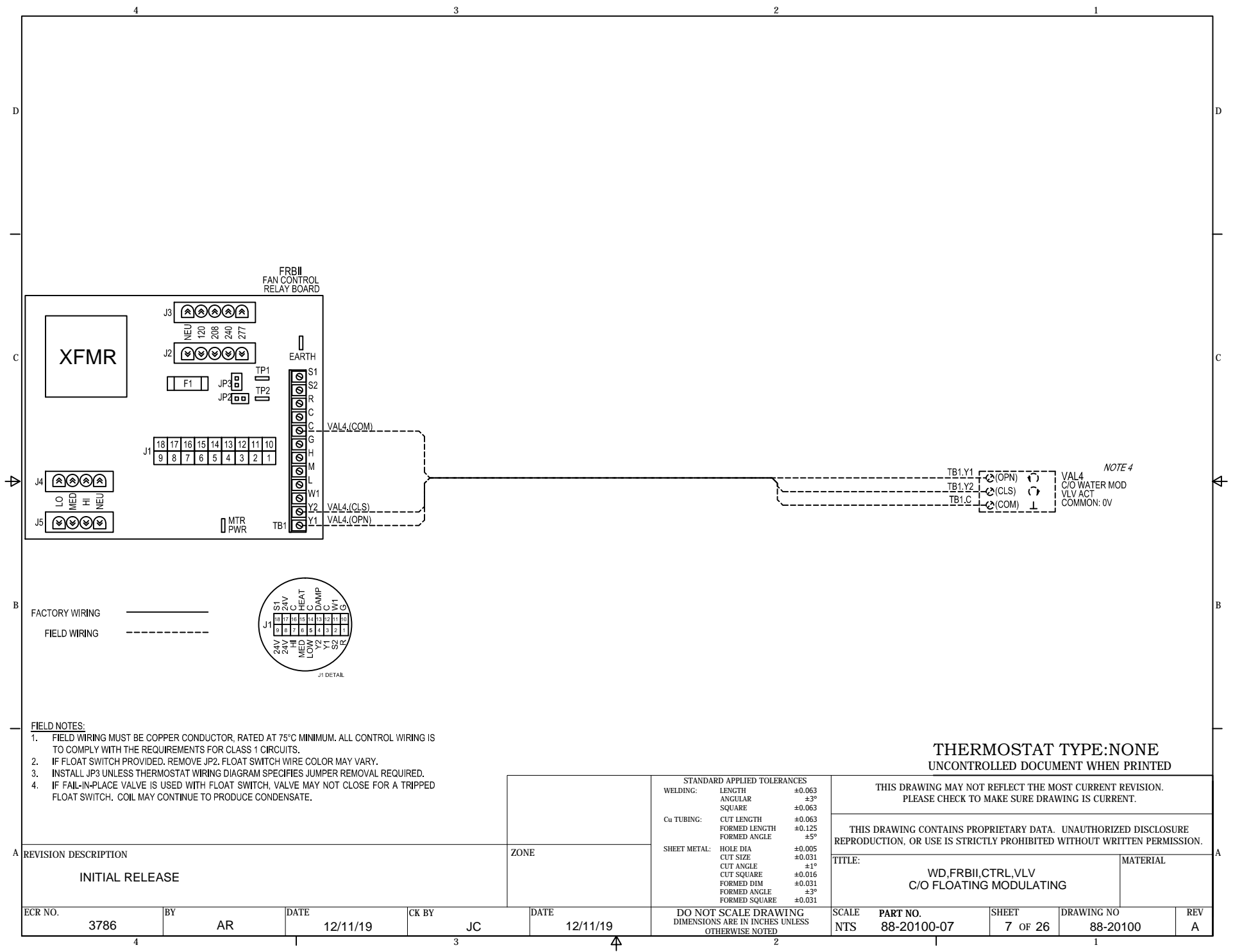
THIS DRAWING CONTAINS PROPRIETARY DATA. UNAUTHORIZED DISCLOSURE
REPRODUCTION, OR USE IS STRICTLY PROHIBITED WITHOUT WRITTEN PERMISSION.

TITLE: WD,FRBII,CTRL,VLV
C/O PROPORTIONAL,AQUASTAT

MATERIAL

ECR NO.	3786	BY	AR	DATE	12/11/19	CK BY	JC	DATE	12/11/19	SCALE	NTS	PART NO.	88-20100-03	SHEET	3 OF 26	DRAWING NO	88-20100	REV	A
---------	------	----	----	------	----------	-------	----	------	----------	-------	-----	----------	-------------	-------	---------	------------	----------	-----	---





FIELD NOTES:

1. FIELD WIRING MUST BE COPPER CONDUCTOR, RATED AT 75°C MINIMUM. ALL CONTROL WIRING IS TO COMPLY WITH THE REQUIREMENTS FOR CLASS 1 CIRCUITS.
2. IF FLOAT SWITCH PROVIDED, REMOVE JP2. FLOAT SWITCH WIRE COLOR MAY VARY.
3. INSTALL JP3 UNLESS THERMOSTAT WIRING DIAGRAM SPECIFIES JUMPER REMOVAL REQUIRED.
4. IF FAIL-IN-PLACE VALVE IS USED WITH FLOAT SWITCH, VALVE MAY NOT CLOSE FOR A TRIPPED FLOAT SWITCH. COIL MAY CONTINUE TO PRODUCE CONDENSATE.

THERMOSTAT TYPE:NONE
UNCONTROLLED DOCUMENT WHEN PRINTED

REVISION DESCRIPTION

INITIAL RELEASE

ZONE

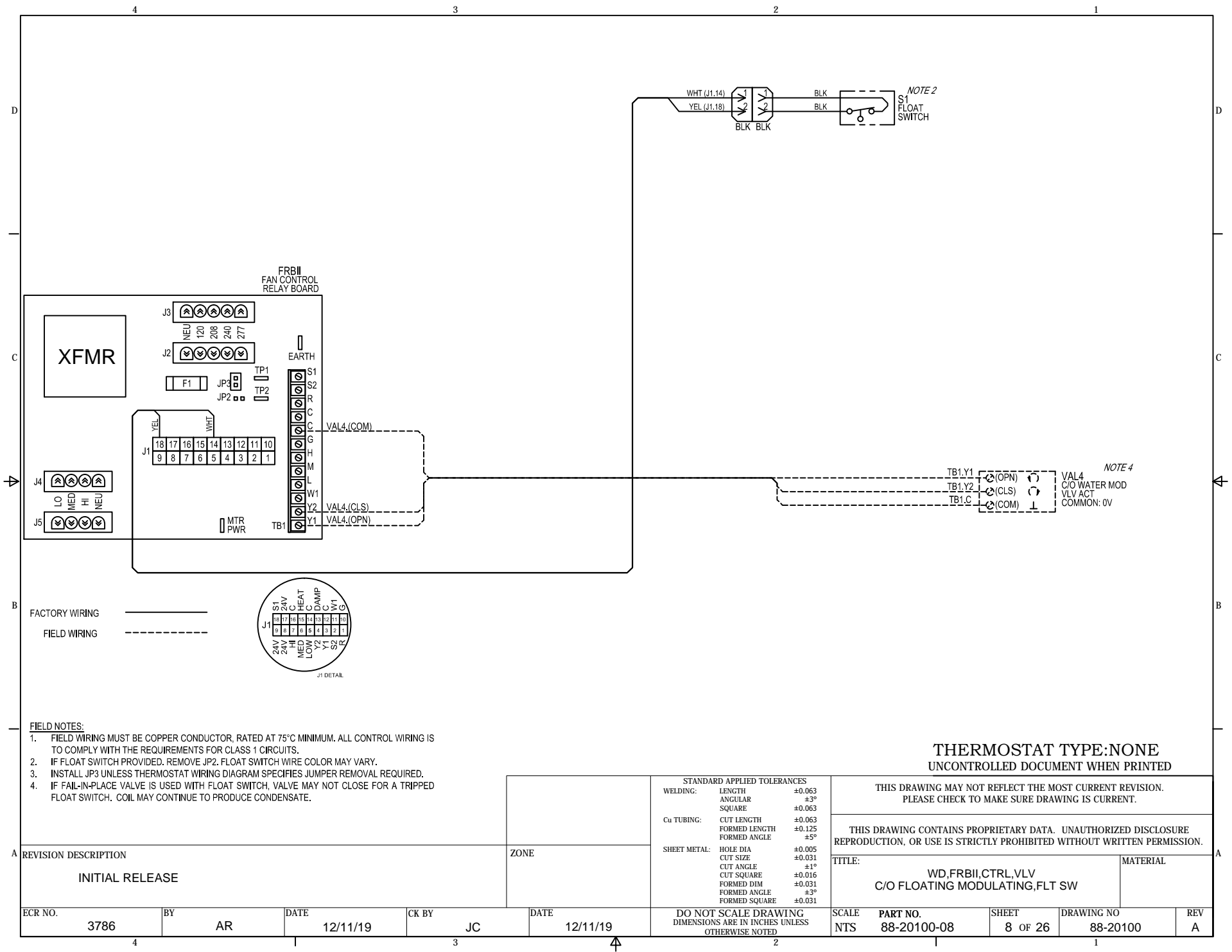
STANDARD APPLIED TOLERANCES		
WELDING:	LENGTH	±0.063
	ANGULAR	±3°
	SQUARE	±0.063
Cu TUBING:	CUT LENGTH	±0.063
	FORMED LENGTH	±0.125
	FORMED ANGLE	±5°
	SHEET METAL:	
	HOLE DIA	±0.005
	CUT SIZE	±0.031
	CUT ANGLE	±1°
	CUT SQUARE	±0.016
	FORMED DIM	±0.031
	FORMED ANGLE	±3°
	FORMED SQUARE	±0.031

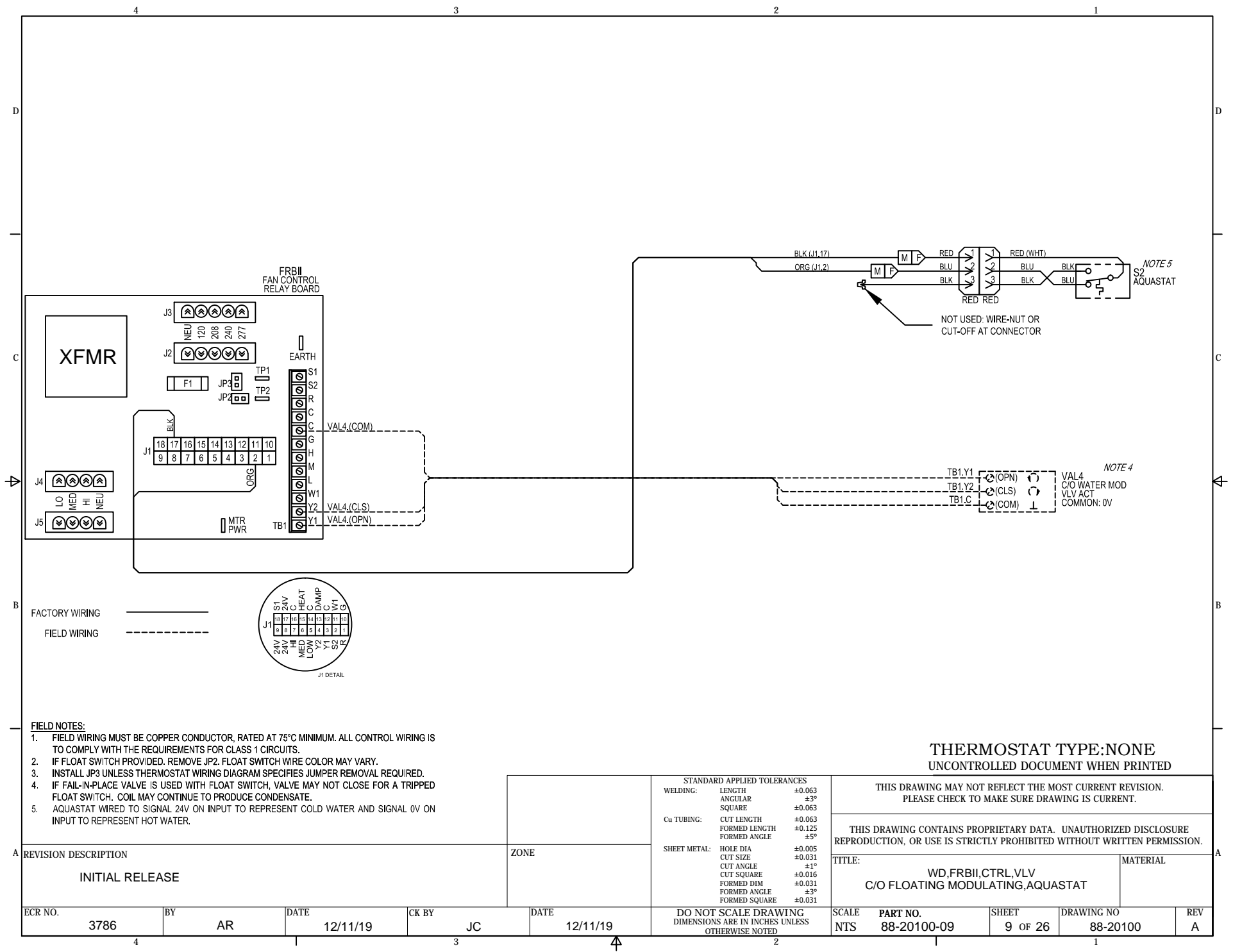
THIS DRAWING MAY NOT REFLECT THE MOST CURRENT REVISION.
PLEASE CHECK TO MAKE SURE DRAWING IS CURRENT.

THIS DRAWING CONTAINS PROPRIETARY DATA. UNAUTHORIZED DISCLOSURE
REPRODUCTION, OR USE IS STRICTLY PROHIBITED WITHOUT WRITTEN PERMISSION.

TITLE:	WD,FRBII,CTRL,VLV C/O FLOATING MODULATING	MATERIAL
--------	--	----------

ECR NO.	3786	BY	AR	DATE	12/11/19	CK BY	JC	DATE	12/11/19	DO NOT SCALE DRAWING DIMENSIONS ARE IN INCHES UNLESS OTHERWISE NOTED	SCALE	NTS	PART NO.	88-20100-07	SHEET	7 OF 26	DRAWING NO	88-20100	REV	A
---------	------	----	----	------	----------	-------	----	------	----------	--	-------	-----	----------	-------------	-------	---------	------------	----------	-----	---





FIELD NOTES:

1. FIELD WIRING MUST BE COPPER CONDUCTOR, RATED AT 75°C MINIMUM. ALL CONTROL WIRING IS TO COMPLY WITH THE REQUIREMENTS FOR CLASS 1 CIRCUITS.
2. IF FLOAT SWITCH PROVIDED. REMOVE JP2. FLOAT SWITCH WIRE COLOR MAY VARY.
3. INSTALL JP3 UNLESS THERMOSTAT WIRING DIAGRAM SPECIFIES JUMPER REMOVAL REQUIRED.
4. IF FAIL-IN-PLACE VALVE IS USED WITH FLOAT SWITCH, VALVE MAY NOT CLOSE FOR A TRIPPED FLOAT SWITCH. COIL MAY CONTINUE TO PRODUCE CONDENSATE.
5. AQUASTAT WIRE TO SIGNAL 24V ON INPUT TO REPRESENT COLD WATER AND SIGNAL 0V ON INPUT TO REPRESENT HOT WATER.

REVISION DESCRIPTION

INITIAL RELEASE

ZONE

STANDARD APPLIED TOLERANCES		
WELDING:	LENGTH	±0.063
	ANGULAR	±3°
	SQUARE	±0.063
Cu TUBING:	CUT LENGTH	±0.063
	FORMED LENGTH	±0.125
	FORMED ANGLE	±5°
SHEET METAL:	HOLE DIA	±0.005
	CUT SIZE	±0.031
	CUT ANGLE	±1°
	CUT SQUARE	±0.016
	FORMED DIM	±0.031
	FORMED ANGLE	±3°
	FORMED SQUARE	±0.031

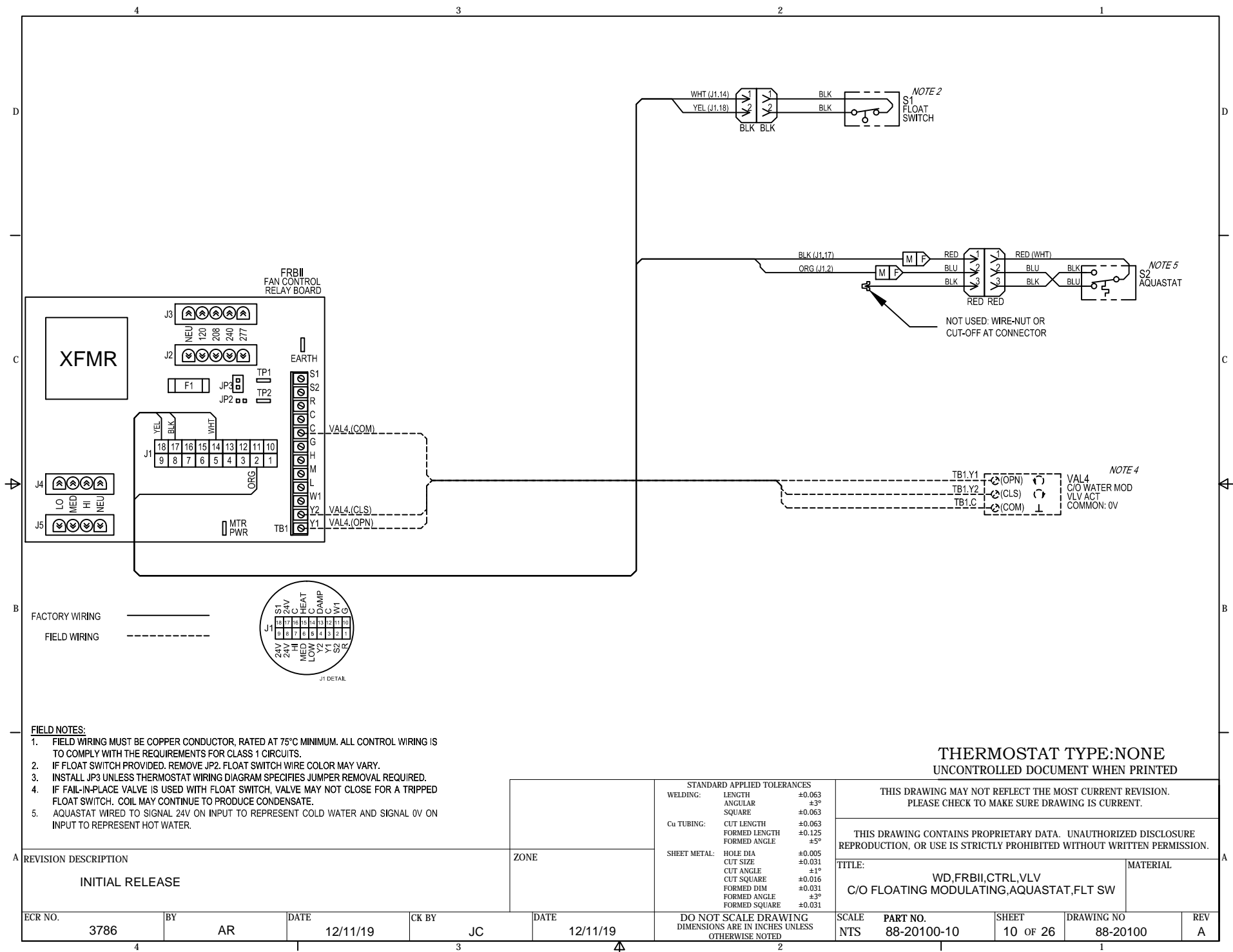
THIS DRAWING MAY NOT REFLECT THE MOST CURRENT REVISION.
PLEASE CHECK TO MAKE SURE DRAWING IS CURRENT.

THIS DRAWING CONTAINS PROPRIETARY DATA. UNAUTHORIZED DISCLOSURE
REPRODUCTION, OR USE IS STRICTLY PROHIBITED WITHOUT WRITTEN PERMISSION.

TITLE: WD,FRBII,CTRL,VLV
C/O FLOATING MODULATING,AQUASTAT

MATERIAL

ECR NO.	3786	BY	AR	DATE	12/11/19	CK BY	JC	DATE	12/11/19	DO NOT SCALE DRAWING DIMENSIONS ARE IN INCHES UNLESS OTHERWISE NOTED	SCALE	NTS	PART NO.	88-20100-09	SHEET	9 OF 26	DRAWING NO	88-20100	REV	A
---------	------	----	----	------	----------	-------	----	------	----------	--	-------	-----	----------	-------------	-------	---------	------------	----------	-----	---



FIELD NOTES:

1. FIELD WIRING MUST BE COPPER CONDUCTOR, RATED AT 75°C MINIMUM. ALL CONTROL WIRING IS TO COMPLY WITH THE REQUIREMENTS FOR CLASS 1 CIRCUITS.
2. IF FLOAT SWITCH PROVIDED. REMOVE JP2. FLOAT SWITCH WIRE COLOR MAY VARY.
3. INSTALL JP3 UNLESS THERMOSTAT WIRING DIAGRAM SPECIFIES JUMPER REMOVAL REQUIRED.
4. IF FAIL-IN-PLACE VALVE IS USED WITH FLOAT SWITCH, VALVE MAY NOT CLOSE FOR A TRIPPED FLOAT SWITCH. COIL MAY CONTINUE TO PRODUCE CONDENSATE.
5. AQUASTAT WIRED TO SIGNAL 24V ON INPUT TO REPRESENT COLD WATER AND SIGNAL 0V ON INPUT TO REPRESENT HOT WATER.

REVISION DESCRIPTION

INITIAL RELEASE

ZONE

STANDARD APPLIED TOLERANCES		
WELDING:	LENGTH	±0.063
	ANGULAR	±3°
	SQUARE	±0.063
Cu TUBING:	CUT LENGTH	±0.063
	FORMED LENGTH	±0.125
	FORMED ANGLE	±5°
	FORMED SQUARE	±0.031
SHEET METAL:	HOLE DIA	±0.005
	CUT SIZE	±0.031
	CUT ANGLE	±1°
	CUT SQUARE	±0.016
	FORMED DIM	±0.031
	FORMED ANGLE	±3°

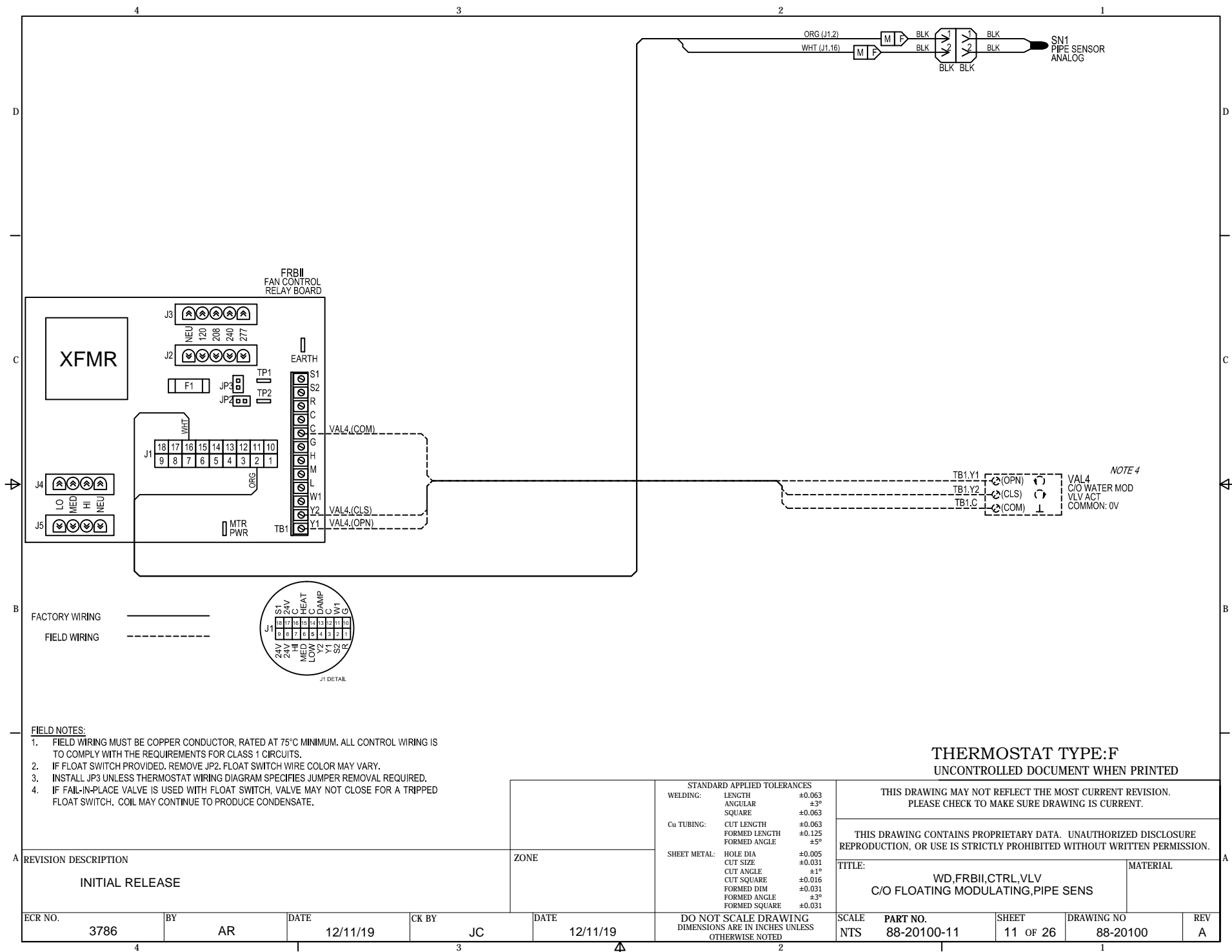
THIS DRAWING MAY NOT REFLECT THE MOST CURRENT REVISION.
PLEASE CHECK TO MAKE SURE DRAWING IS CURRENT.

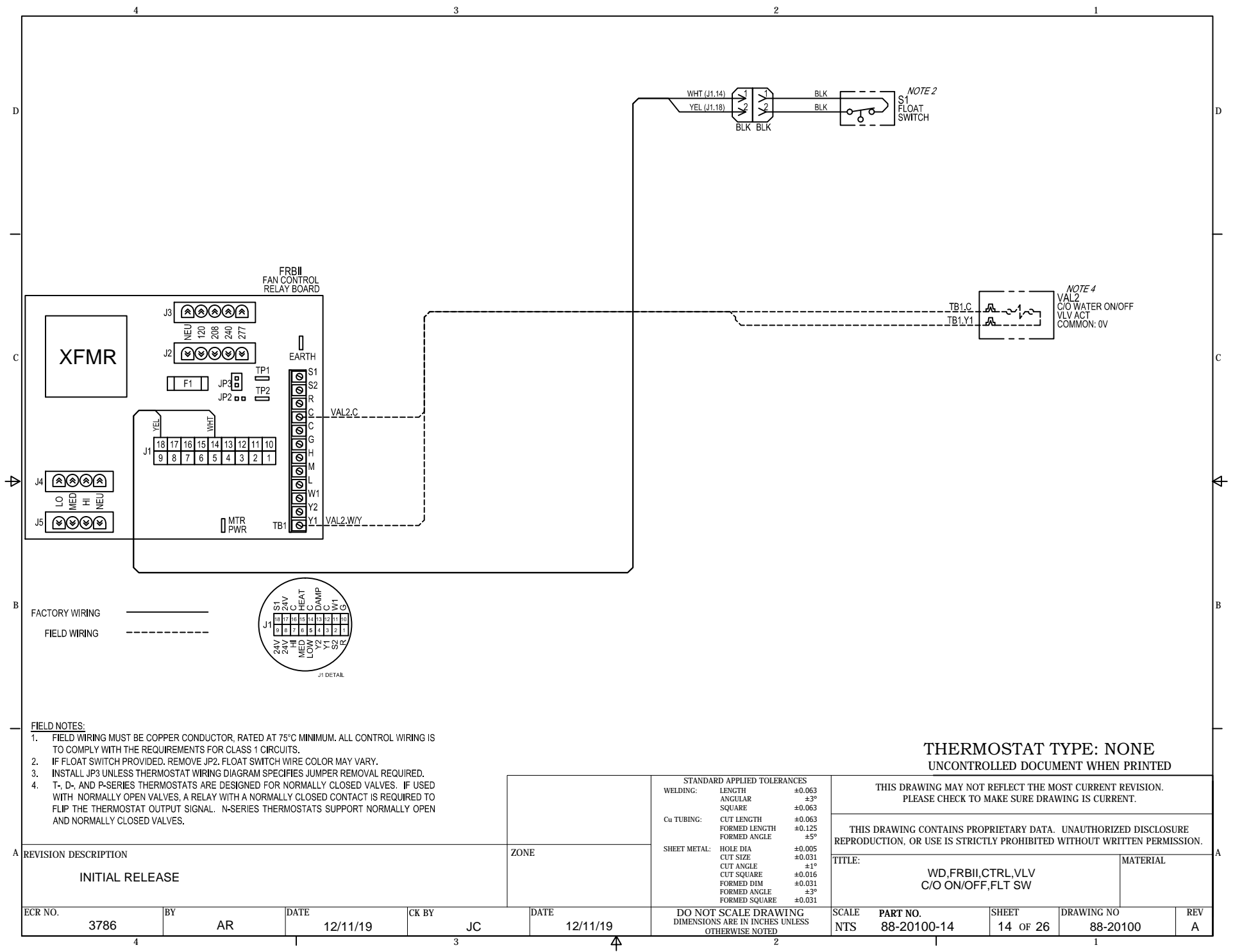
THIS DRAWING CONTAINS PROPRIETARY DATA. UNAUTHORIZED DISCLOSURE
REPRODUCTION, OR USE IS STRICTLY PROHIBITED WITHOUT WRITTEN PERMISSION.

TITLE: WD,FRBII,CTRL,VLV
C/O FLOATING MODULATING,AQUASTAT,FLT SW

MATERIAL

ECR NO.	3786	BY	AR	DATE	12/11/19	CK BY	JC	DATE	12/11/19	DO NOT SCALE DRAWING DIMENSIONS ARE IN INCHES UNLESS OTHERWISE NOTED	SCALE	NTS	PART NO.	88-20100-10	SHEET	10 OF 26	DRAWING NO	88-20100	REV	A
---------	------	----	----	------	----------	-------	----	------	----------	--	-------	-----	----------	-------------	-------	----------	------------	----------	-----	---





FIELD NOTES:

1. FIELD WIRING MUST BE COPPER CONDUCTOR, RATED AT 75°C MINIMUM. ALL CONTROL WIRING IS TO COMPLY WITH THE REQUIREMENTS FOR CLASS 1 CIRCUITS.
2. IF FLOAT SWITCH PROVIDED, REMOVE JP2. FLOAT SWITCH WIRE COLOR MAY VARY.
3. INSTALL JP3 UNLESS THERMOSTAT WIRING DIAGRAM SPECIFIES JUMPER REMOVAL REQUIRED.
4. T-, D-, AND P-SERIES THERMOSTATS ARE DESIGNED FOR NORMALLY CLOSED VALVES. IF USED WITH NORMALLY OPEN VALVES, A RELAY WITH A NORMALLY CLOSED CONTACT IS REQUIRED TO FLIP THE THERMOSTAT OUTPUT SIGNAL. N-SERIES THERMOSTATS SUPPORT NORMALLY OPEN AND NORMALLY CLOSED VALVES.

REVISION DESCRIPTION

INITIAL RELEASE

ZONE

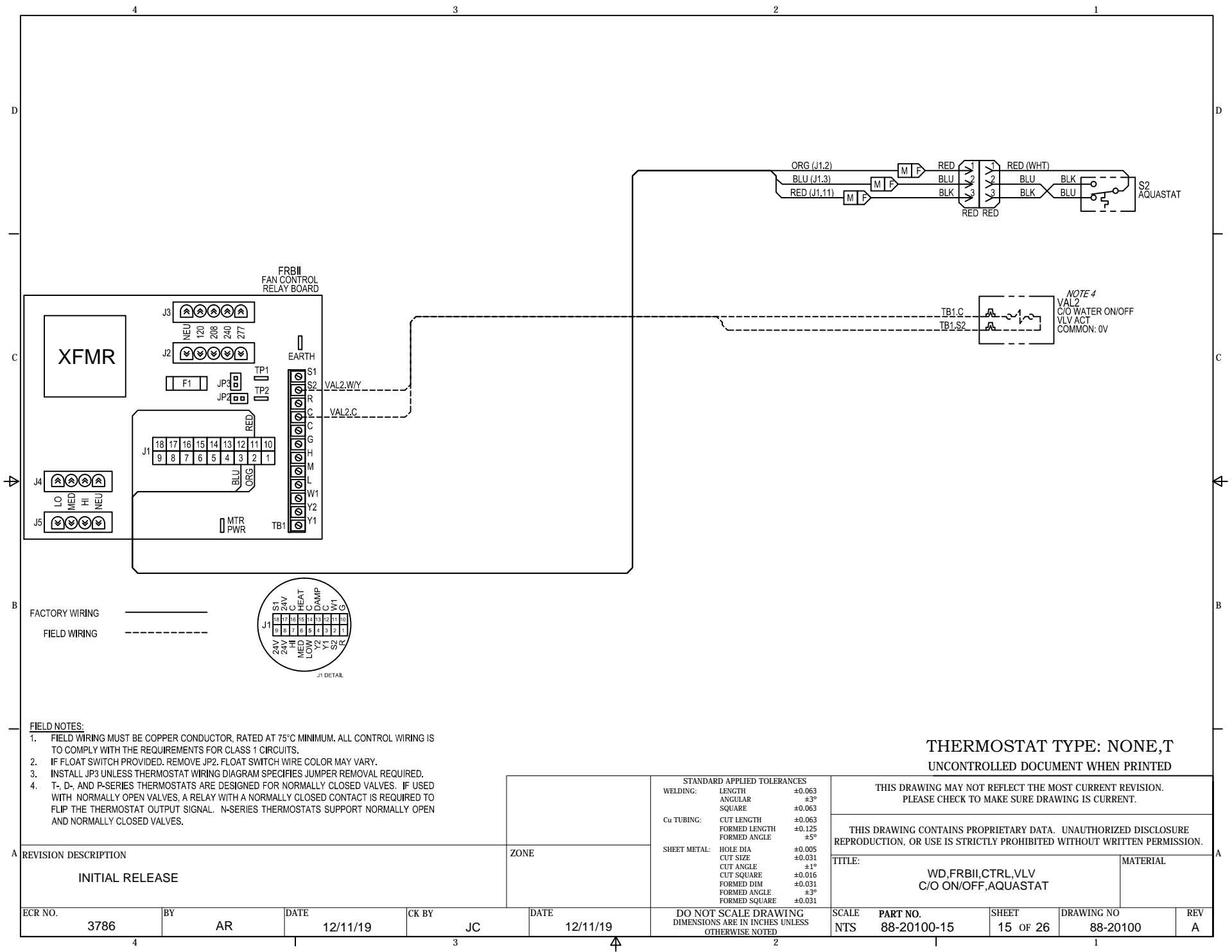
STANDARD APPLIED TOLERANCES		
WELDING:	LENGTH	±0.063
	ANGULAR	±3°
	SQUARE	±0.063
Cu TUBING:	CUT LENGTH	±0.063
	FORMED LENGTH	±0.125
	FORMED ANGLE	±5°
SHEET METAL:	HOLE DIA	±0.005
	CUT SIZE	±0.031
	CUT ANGLE	±1°
	CUT SQUARE	±0.016
	FORMED DIM	±0.031
	FORMED ANGLE	±3°
	FORMED SQUARE	±0.031

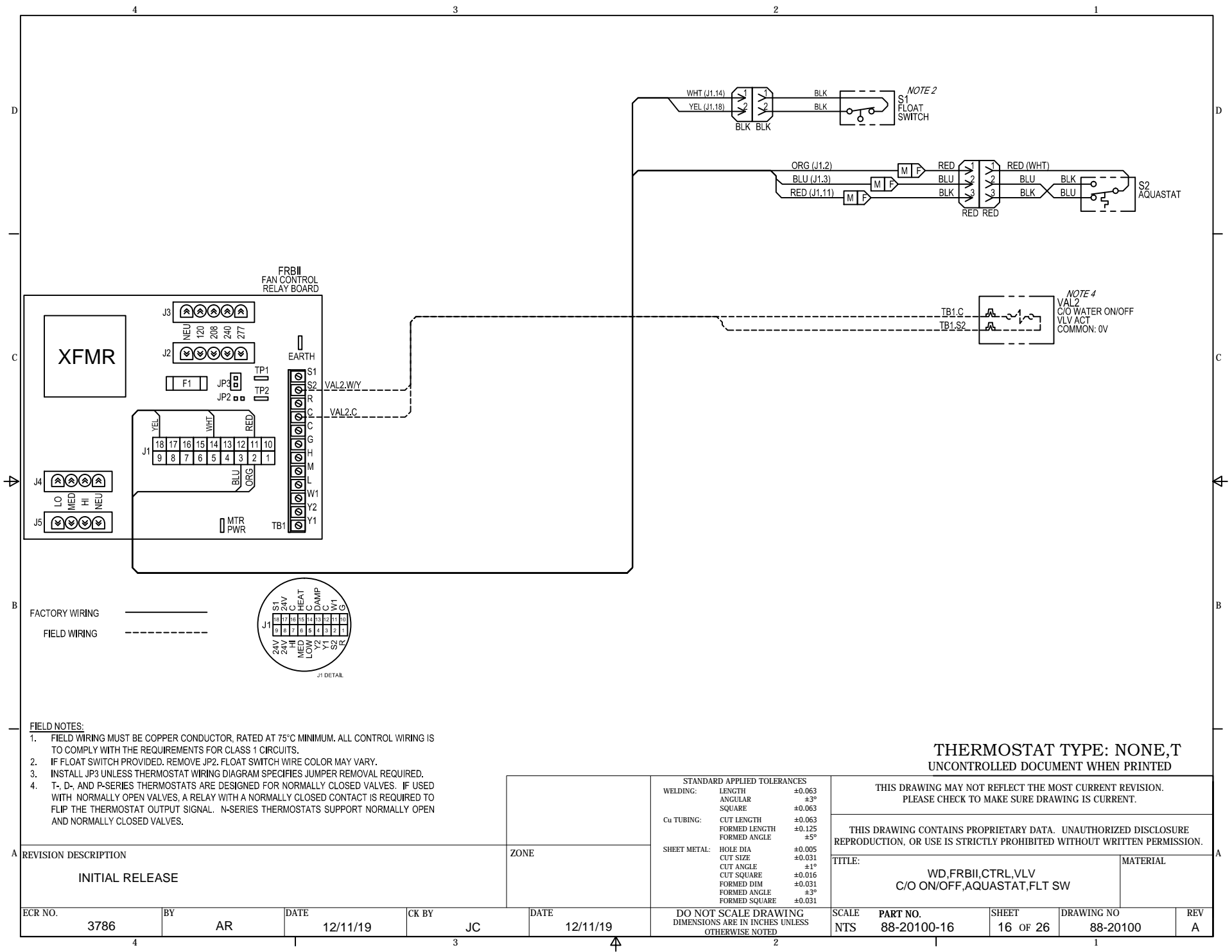
THIS DRAWING MAY NOT REFLECT THE MOST CURRENT REVISION.
PLEASE CHECK TO MAKE SURE DRAWING IS CURRENT.

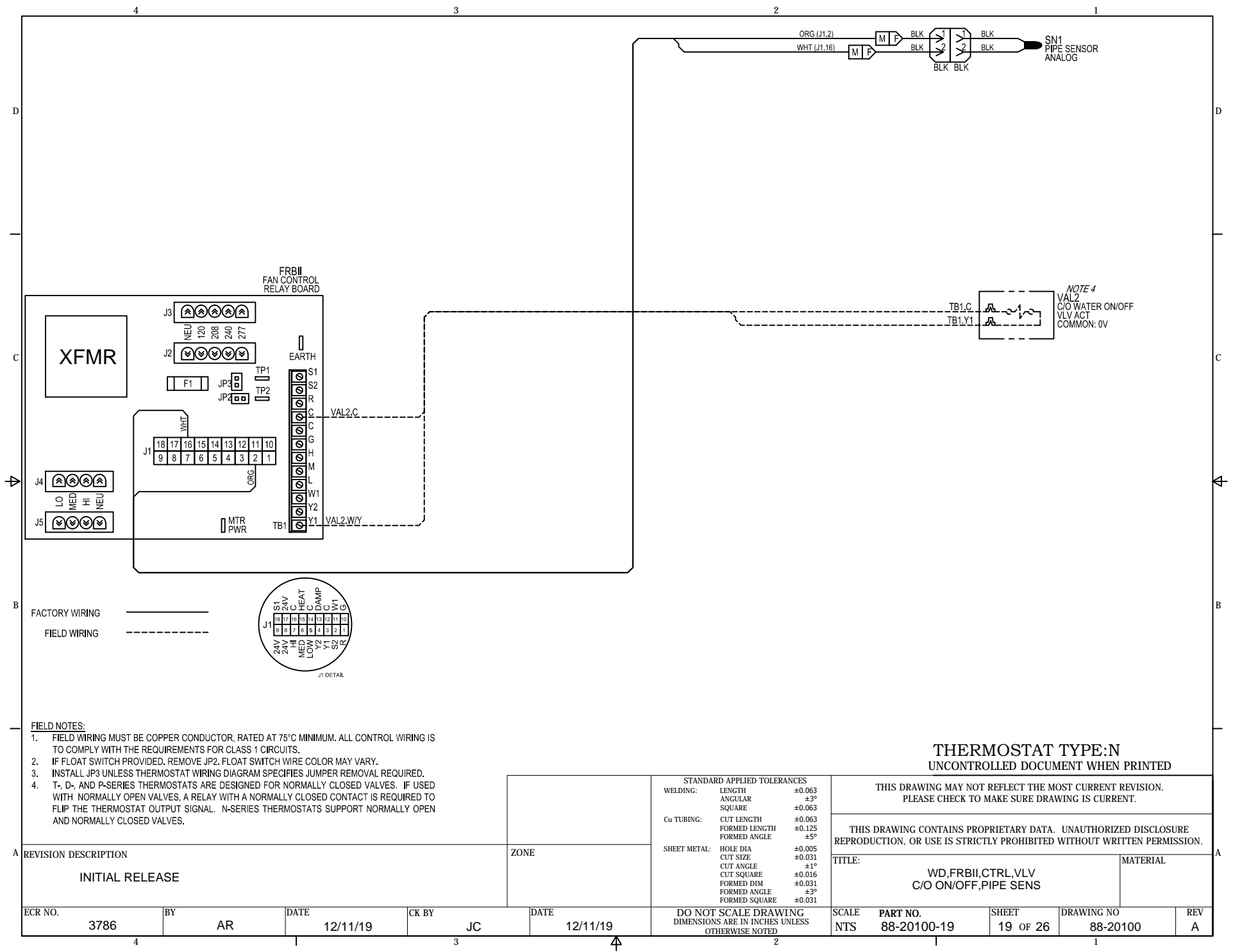
THIS DRAWING CONTAINS PROPRIETARY DATA. UNAUTHORIZED DISCLOSURE
REPRODUCTION, OR USE IS STRICTLY PROHIBITED WITHOUT WRITTEN PERMISSION.

TITLE:	WD,FRBII,CTRL,VLV C/O ON/OFF,FLT SW	MATERIAL
--------	--	----------

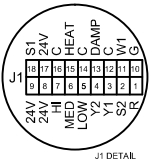
ECR NO.	BY	DATE	CK BY	DATE	DO NOT SCALE DRAWING DIMENSIONS ARE IN INCHES UNLESS OTHERWISE NOTED	SCALE	PART NO.	SHEET	DRAWING NO	REV
3786	AR	12/11/19	JC	12/11/19		NTS	88-20100-14	14 OF 26	88-20100	A







FACTORY WIRING _____
FIELD WIRING - - - - -



FIELD NOTES:

1. FIELD WIRING MUST BE COPPER CONDUCTOR, RATED AT 75°C MINIMUM. ALL CONTROL WIRING IS TO COMPLY WITH THE REQUIREMENTS FOR CLASS 1 CIRCUITS.
2. IF FLOAT SWITCH PROVIDED, REMOVE JP2. FLOAT SWITCH WIRE COLOR MAY VARY.
3. INSTALL JP3 UNLESS THERMOSTAT WIRING DIAGRAM SPECIFIES JUMPER REMOVAL REQUIRED.
4. T-, D-, AND P-SERIES THERMOSTATS ARE DESIGNED FOR NORMALLY CLOSED VALVES. IF USED WITH NORMALLY OPEN VALVES, A RELAY WITH A NORMALLY CLOSED CONTACT IS REQUIRED TO FLIP THE THERMOSTAT OUTPUT SIGNAL. N-SERIES THERMOSTATS SUPPORT NORMALLY OPEN AND NORMALLY CLOSED VALVES.

REVISION DESCRIPTION

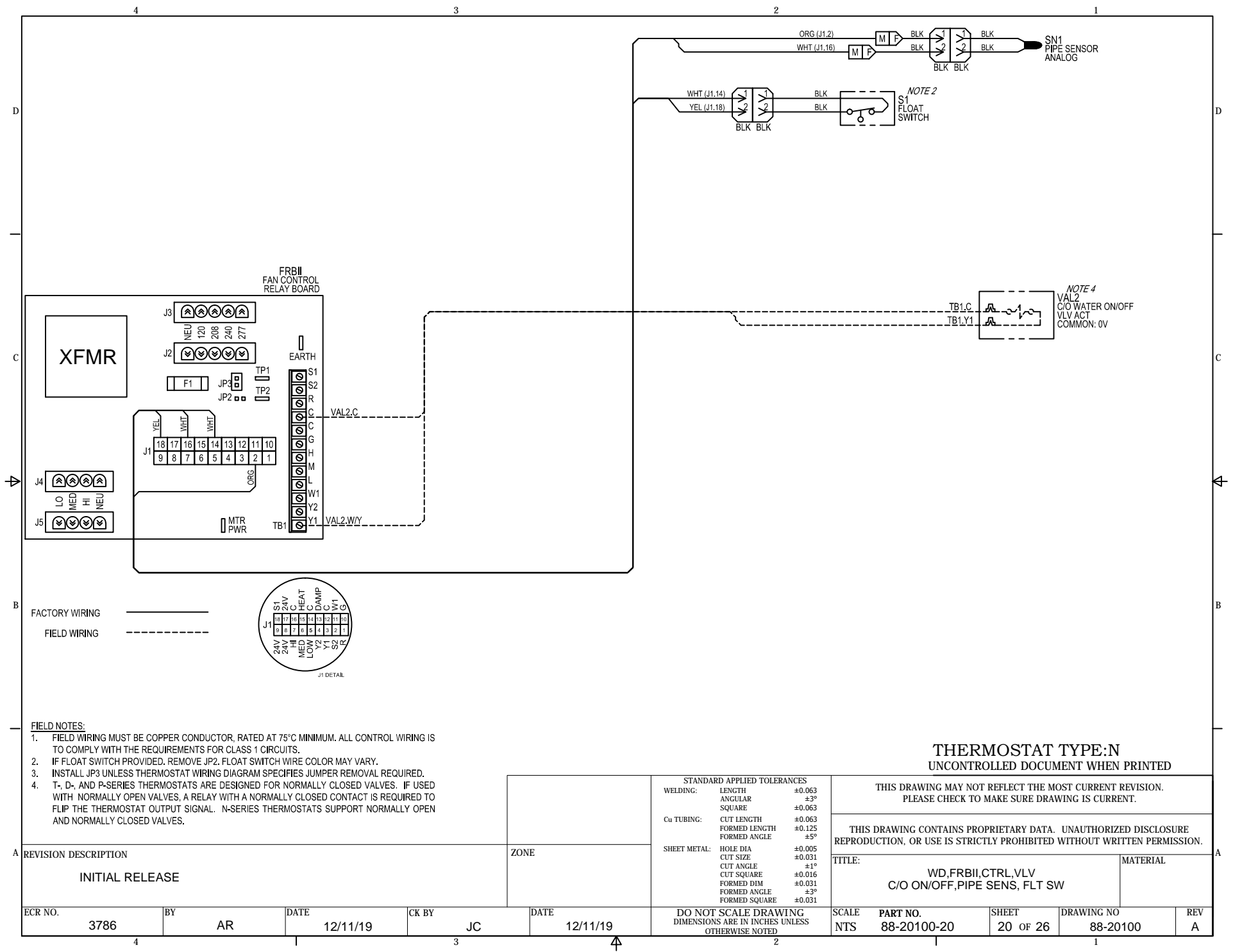
INITIAL RELEASE

ZONE

STANDARD APPLIED TOLERANCES		
WELDING:	LENGTH	±0.063
	ANGULAR	±3°
	SQUARE	±0.063
Cu TUBING:	CUT LENGTH	±0.063
	FORMED LENGTH	±0.125
	FORMED ANGLE	±5°
	SHEET METAL:	
	HOLE DIA	±0.005
	CUT SIZE	±0.031
	CUT ANGLE	±1°
	CUT SQUARE	±0.016
	FORMED DIM	±0.031
	FORMED ANGLE	±3°
	FORMED SQUARE	±0.031

THIS DRAWING MAY NOT REFLECT THE MOST CURRENT REVISION. PLEASE CHECK TO MAKE SURE DRAWING IS CURRENT.		
THIS DRAWING CONTAINS PROPRIETARY DATA. UNAUTHORIZED DISCLOSURE REPRODUCTION, OR USE IS STRICTLY PROHIBITED WITHOUT WRITTEN PERMISSION.		
TITLE: WD,FRBII,CTRL,VLV C/O ON/OFF,PIPE SENS		MATERIAL

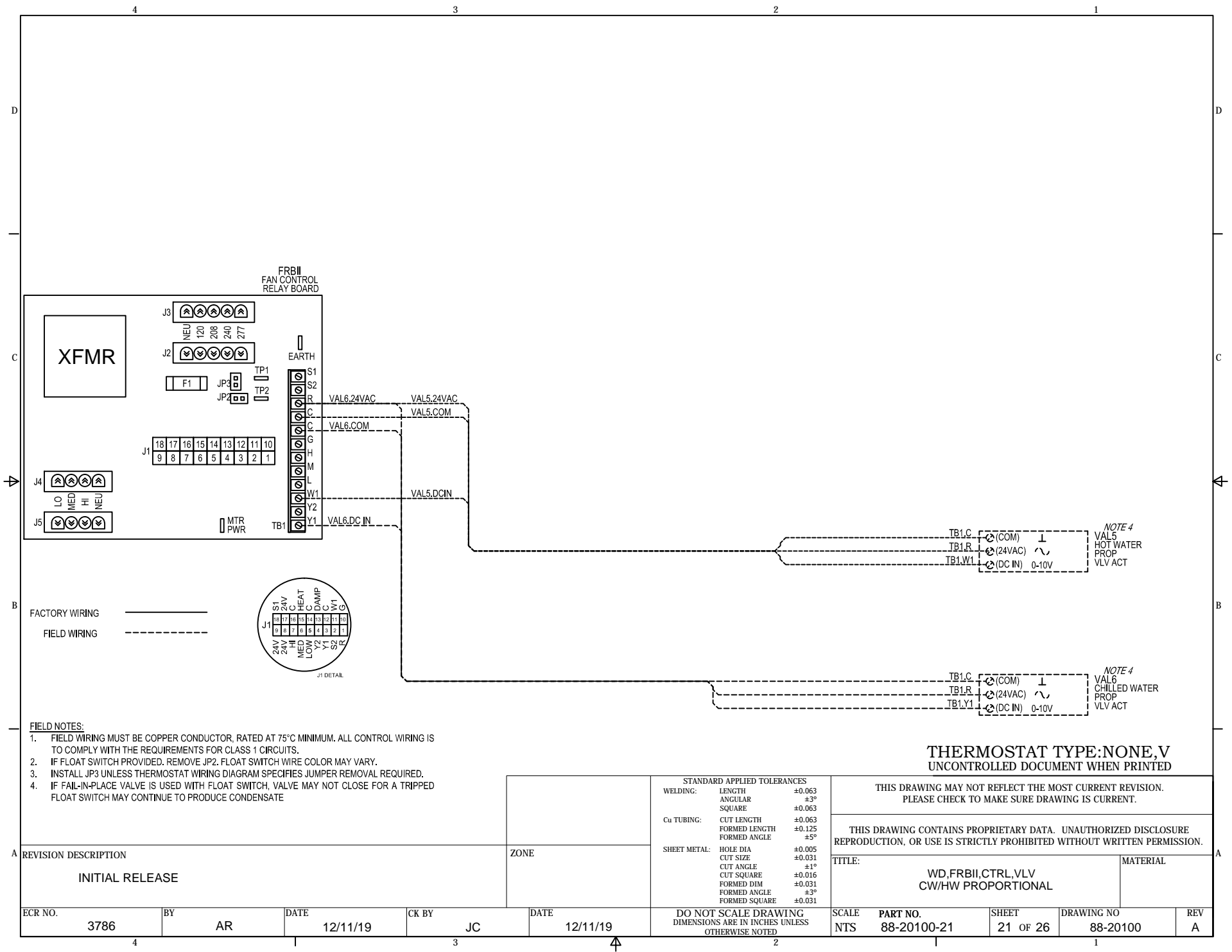
ECR NO.	BY	DATE	CK BY	DATE	DO NOT SCALE DRAWING DIMENSIONS ARE IN INCHES UNLESS OTHERWISE NOTED	SCALE	PART NO.	SHEET	DRAWING NO	REV
3786	AR	12/11/19	JC	12/11/19		NTS	88-20100-19	19 OF 26	88-20100	A

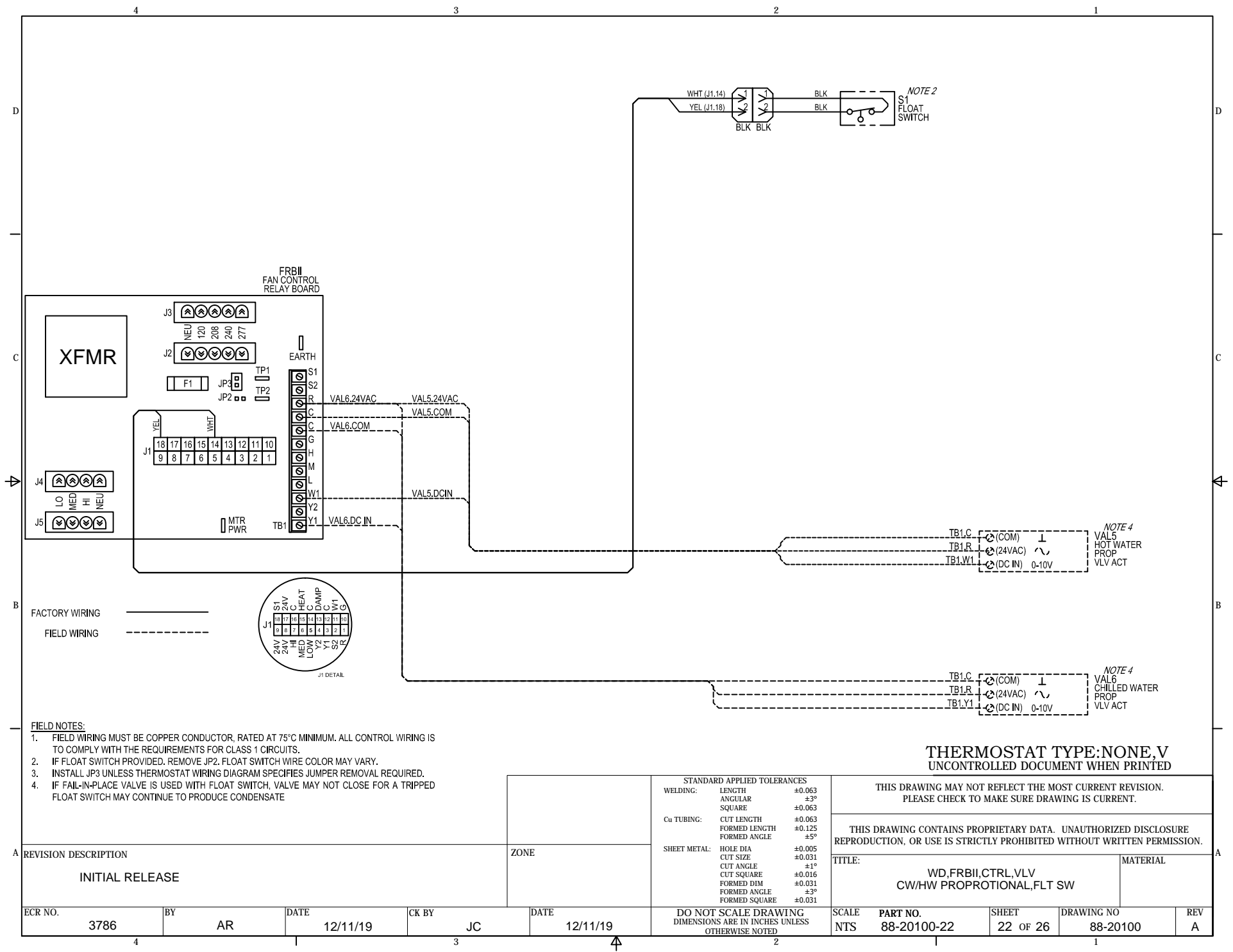


THERMOSTAT TYPE:N
UNCONTROLLED DOCUMENT WHEN PRINTED

THIS DRAWING MAY NOT REFLECT THE MOST CURRENT REVISION. PLEASE CHECK TO MAKE SURE DRAWING IS CURRENT.	
THIS DRAWING CONTAINS PROPRIETARY DATA. UNAUTHORIZED DISCLOSURE REPRODUCTION, OR USE IS STRICTLY PROHIBITED WITHOUT WRITTEN PERMISSION.	
TITLE: <div>WD,FRBII,CTRL,VLV C/O ON/OFF,PIPE SENS, FLT SW</div>	MATERIAL

ECR NO. <div>3786</div>	BY <div>AR</div>	DATE <div>12/11/19</div>	CK BY <div>JC</div>	DATE <div>12/11/19</div>	DO NOT SCALE DRAWING DIMENSIONS ARE IN INCHES UNLESS OTHERWISE NOTED	SCALE <div>NTS</div>	PART NO. <div>88-20100-20</div>	SHEET <div>20 OF 26</div>	DRAWING NO <div>88-20100</div>	REV <div>A</div>
-------------------------	------------------	--------------------------	---------------------	--------------------------	---	----------------------	---------------------------------	---------------------------	--------------------------------	------------------





FIELD NOTES:

1. FIELD WIRING MUST BE COPPER CONDUCTOR, RATED AT 75°C MINIMUM. ALL CONTROL WIRING IS TO COMPLY WITH THE REQUIREMENTS FOR CLASS 1 CIRCUITS.
2. IF FLOAT SWITCH PROVIDED, REMOVE JP2. FLOAT SWITCH WIRE COLOR MAY VARY.
3. INSTALL JP3 UNLESS THERMOSTAT WIRING DIAGRAM SPECIFIES JUMPER REMOVAL REQUIRED.
4. IF FAIL-IN-PLACE VALVE IS USED WITH FLOAT SWITCH, VALVE MAY NOT CLOSE FOR A TRIPPED FLOAT SWITCH MAY CONTINUE TO PRODUCE CONDENSATE

REVISION DESCRIPTION

INITIAL RELEASE

ZONE

STANDARD APPLIED TOLERANCES		
WELDING:	LENGTH	±0.063
	ANGULAR	±3°
	SQUARE	±0.063
Cu TUBING:	CUT LENGTH	±0.063
	FORMED LENGTH	±0.125
	FORMED ANGLE	±5°
	FORMED DIM	±0.031
SHEET METAL:	HOLE DIA	±0.005
	CUT SIZE	±0.031
	CUT ANGLE	±1°
	CUT SQUARE	±0.016
	FORMED DIM	±0.031
	FORMED ANGLE	±3°
	FORMED SQUARE	±0.031

DO NOT SCALE DRAWING
DIMENSIONS ARE IN INCHES UNLESS
OTHERWISE NOTED

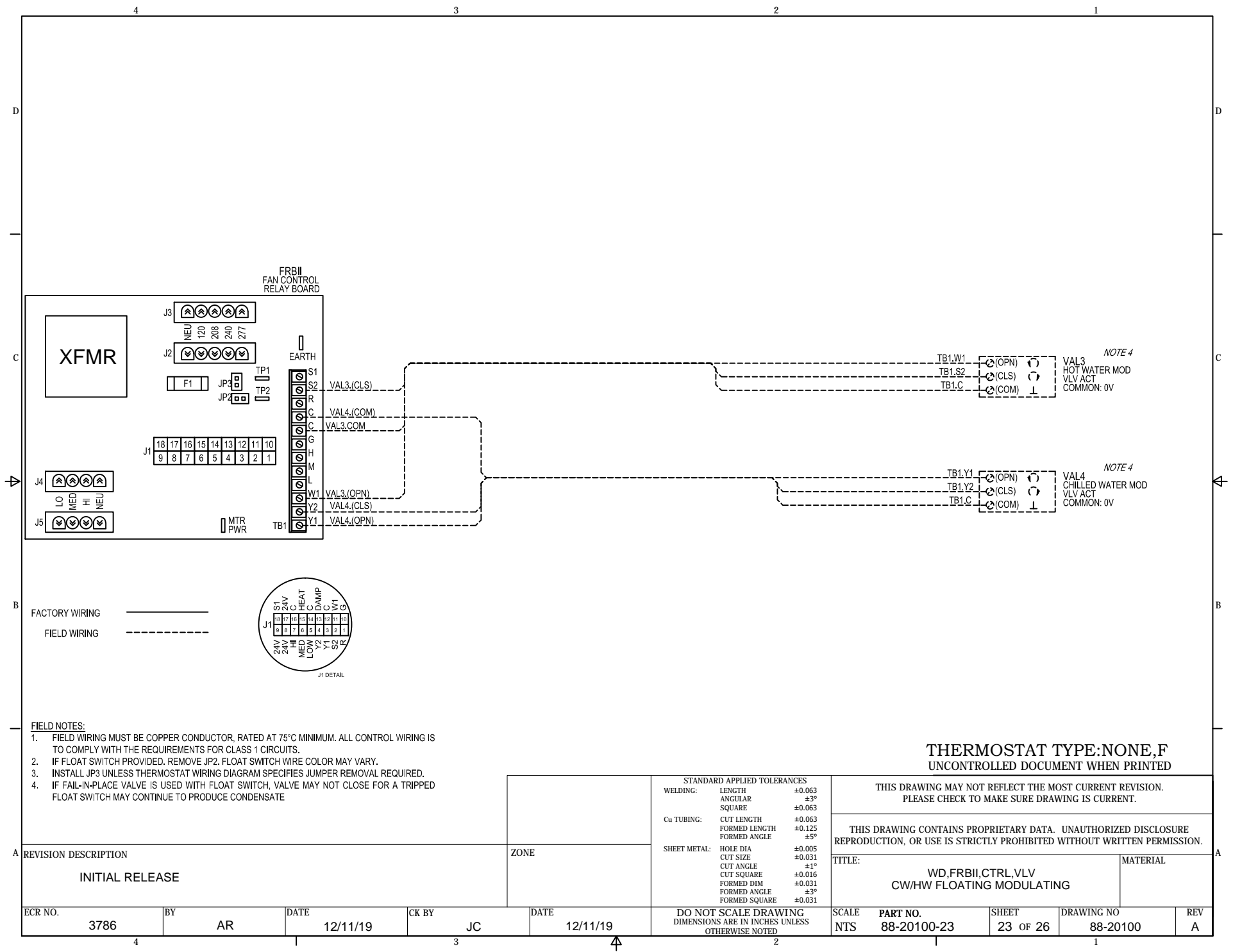
THIS DRAWING MAY NOT REFLECT THE MOST CURRENT REVISION.
PLEASE CHECK TO MAKE SURE DRAWING IS CURRENT.

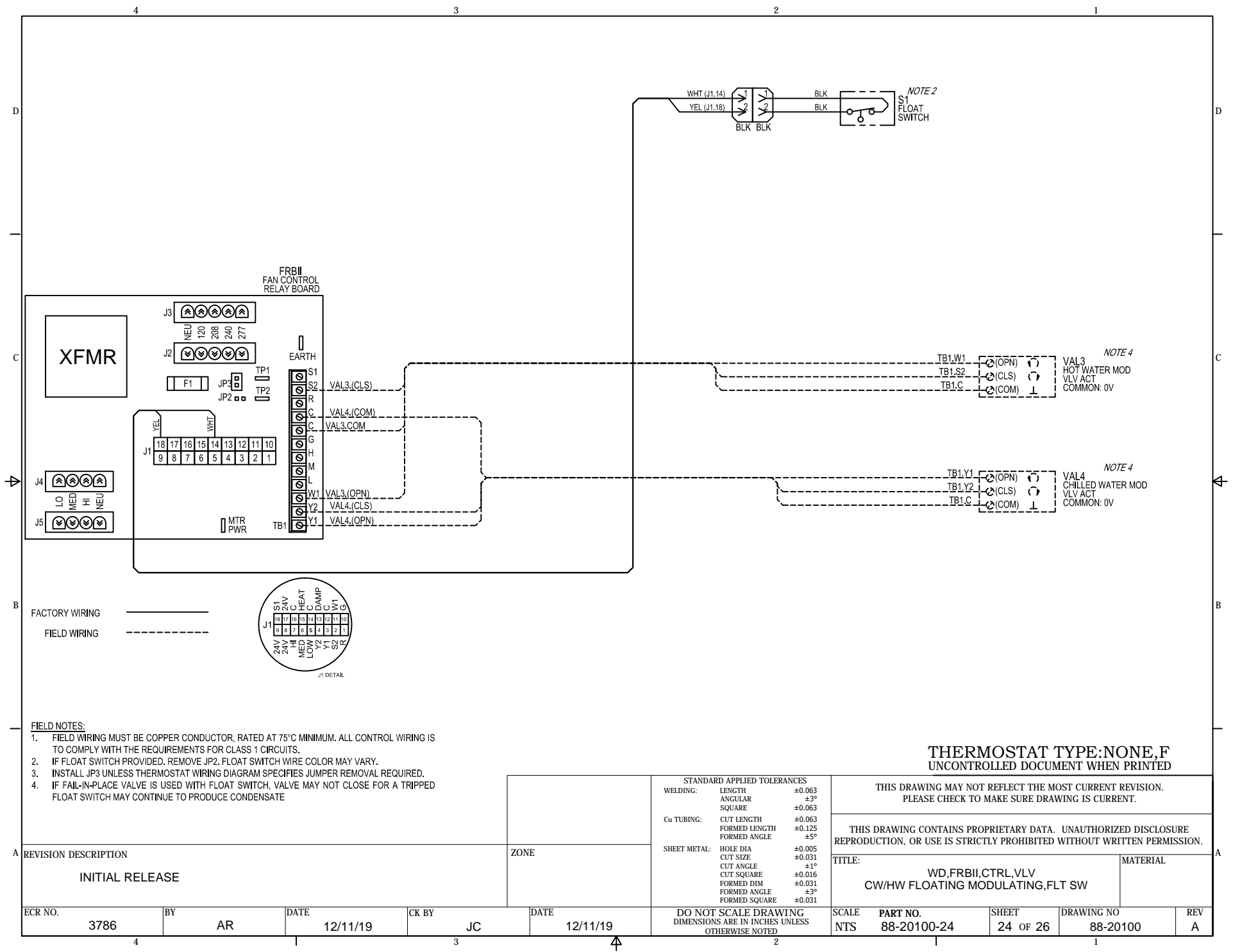
THIS DRAWING CONTAINS PROPRIETARY DATA. UNAUTHORIZED DISCLOSURE
REPRODUCTION, OR USE IS STRICTLY PROHIBITED WITHOUT WRITTEN PERMISSION.

TITLE: WD,FRBII,CTRL,VLV
CW/HW PROPORTIONAL,FLT SW

MATERIAL

ECR NO.	3786	BY	AR	DATE	12/11/19	CK BY	JC	DATE	12/11/19	SCALE	NTS	PART NO.	88-20100-22	SHEET	22 OF 26	DRAWING NO	88-20100	REV	A
---------	------	----	----	------	----------	-------	----	------	----------	-------	-----	----------	-------------	-------	----------	------------	----------	-----	---





FIELD NOTES:

1. FIELD WIRING MUST BE COPPER CONDUCTOR, RATED AT 75°C MINIMUM. ALL CONTROL WIRING IS TO COMPLY WITH THE REQUIREMENTS FOR CLASS 1 CIRCUITS.
2. IF FLOAT SWITCH PROVIDED, REMOVE JP2. FLOAT SWITCH WIRE COLOR MAY VARY.
3. INSTALL JP3 UNLESS THERMOSTAT WIRING DIAGRAM SPECIFIES JUMPER REMOVAL REQUIRED.
4. IF FAIL-IN-PLACE VALVE IS USED WITH FLOAT SWITCH, VALVE MAY NOT CLOSE FOR A TRIPPED FLOAT SWITCH MAY CONTINUE TO PRODUCE CONDENSATE

THERMOSTAT TYPE:NONE,F
UNCONTROLLED DOCUMENT WHEN PRINTED

REVISION DESCRIPTION

INITIAL RELEASE

ZONE

STANDARD APPLIED TOLERANCES		
WELDING:	LENGTH	±0.063
	ANGULAR	±3°
	SQUARE	±0.063
Cu TUBING:	CUT LENGTH	±0.063
	FORMED LENGTH	±0.125
	FORMED ANGLE	±5°
	FORMED SQUARE	±0.005
SHEET METAL:	HOLE DIA	±0.031
	CUT SIZE	±0.031
	CUT ANGLE	±1°
	CUT SQUARE	±0.016
	FORMED DIM	±0.031
	FORMED ANGLE	±3°
	FORMED SQUARE	±0.031

THIS DRAWING MAY NOT REFLECT THE MOST CURRENT REVISION.
PLEASE CHECK TO MAKE SURE DRAWING IS CURRENT.

THIS DRAWING CONTAINS PROPRIETARY DATA. UNAUTHORIZED DISCLOSURE
REPRODUCTION, OR USE IS STRICTLY PROHIBITED WITHOUT WRITTEN PERMISSION.

TITLE: WD,FRBII,CTRL,VLV
CW/HW FLOATING MODULATING,FLT SW

MATERIAL

ECR NO.	3786	BY	AR	DATE	12/11/19	CK BY	JC	DATE	12/11/19	DO NOT SCALE DRAWING DIMENSIONS ARE IN INCHES UNLESS OTHERWISE NOTED	SCALE	NTS	PART NO.	88-20100-24	SHEET	24 OF 26	DRAWING NO	88-20100	REV	A
---------	------	----	----	------	----------	-------	----	------	----------	--	-------	-----	----------	-------------	-------	----------	------------	----------	-----	---

