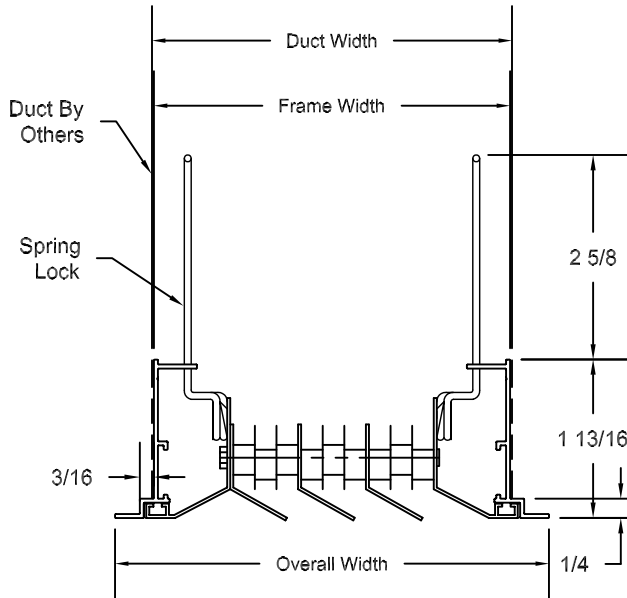
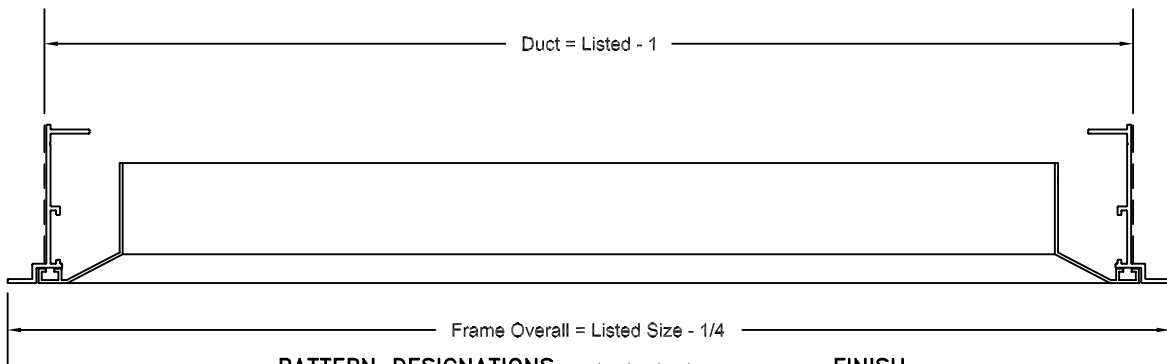




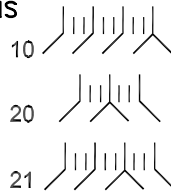
- AIR DIFFUSION VANES AT COUNTER FLOW ANGLES CREATE TURBULENT DISCHARGE FOR HIGH INDUCTION AND RAPID TEMPERATURE EQUALIZATION.
- INTEGRAL DIRECTIONAL DEFLECTORS FOR 1 OR 2-WAY HORIZONTAL PATTERNS.
- EXTRUDED ALUMINUM CONSTRUCTION.
- MAXIMUM ONE PIECE LENGTH = 72" LISTED SIZE.
- MULTIPLE SECTIONS KEYED WITH SPLICE PLATES FOR PROPER ALIGNMENT.
- AVAILABLE WITH 3 TO 36 ROWS IN 3 ROW INCREMENTS FOR LARGER CONFIGURATIONS CONTACT FACTORY.
- CORES EASILY REMOVED FROM LT FRAME, FRAME INSTALLATION/ALIGNMENT SPACERS PROVIDED.
- SATIN ANODIZED (SA) OR WHITE (W) FINISH.



Rows	Duct Width	Frame Width	Overall Width
3	2 - 3/4	2 - 5/8	3 - 41/64
6	3 - 9/16	3 - 7/16	4 - 29/64
9	4 - 7/16	4 - 5/16	5 - 21/64
12	5 - 3/16	5 - 1/16	6 - 5/64
15	6	5 - 7/8	6 - 57/64
18	6 - 13/16	6 - 11/16	7 - 45/64
21	7 - 5/8	7 - 1/2	8 - 33/64
24	8 - 7/16	8 - 5/16	9 - 21/64
27	9 - 1/4	9 - 1/8	10 - 9/64
30	10 - 1/16	9 - 15/16	10 - 61/64
33	10 - 7/8	10 - 3/4	11 - 49/64
36	11 - 11/16	11 - 9/16	12 - 37/64



**PATTERN DESIGNATIONS**



**FINISH**

Satin Anodized	White
Aluminum Paint	Off-White
Flat Black	Match Paint

Job: \_\_\_\_\_  
 Location: \_\_\_\_\_  
 Architect: \_\_\_\_\_  
 Engineer: \_\_\_\_\_  
 Contractor: \_\_\_\_\_

Tag: \_\_\_\_\_  
 Submitted by: \_\_\_\_\_  
 SD-1523.1                      04/24/2007

**EH Stripline LT Frame**  
 Extruded Aluminum  
 Directional Linear Diffuser