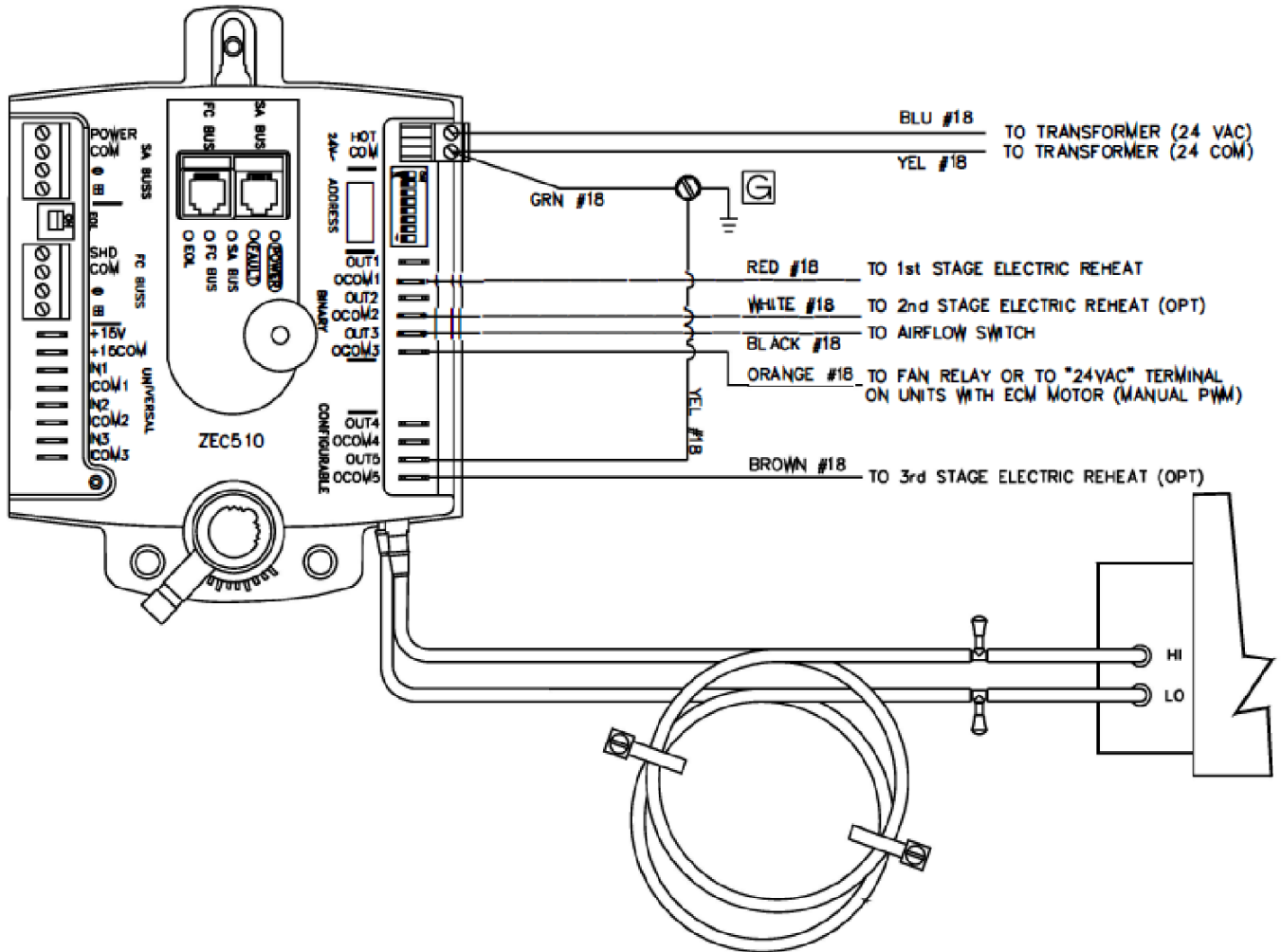


- Plug and Play connection with Smart Equipment System
- BACnet compatible for ease of communication with building automation systems
- Standalone option available (See Application Engineering)
- Factory programming tailored to customer specified airflow values and control sequence
- Optional balancing tool and Mobile Access Portal with RJ12 connections
- LCD Display Thermostat



Dimensions in inches

Job: \_\_\_\_\_  
 Location: \_\_\_\_\_  
 Architect: \_\_\_\_\_  
 Engineer: \_\_\_\_\_  
 Contractor: \_\_\_\_\_

Tag: \_\_\_\_\_  
 Submitted By: \_\_\_\_\_  
 SD - 7718      Rev: A (02/21)

**Fan Powered VAV**  
**DDC Controls**  
**Staged Heat**  
**ZE51-ZE53 / ZE71-ZE73**