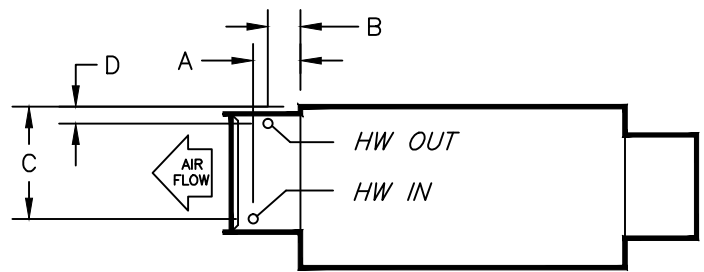


RIGHT HAND HW COIL
(ARGT 2)



LEFT HAND HW COIL
(ARGT 1)

DIMENSIONS - In[mm]

1 ROW STD

UNIT SIZE	A	B	C	D
0606, 0806 1011, 0817 1017, 1217 0819, 1019 1219, 0811	7-3/8 [187]	7-3/8 [187]	12-3/4 [324]	1-1/8 [29]
1021, 1221 1421	7-3/8 [187]	7-3/8 [187]	15-3/8 [390]	4-1/8 [105]
1224, 1424	7-3/8 [187]	7-3/8 [187]	17-3/8 [441]	1-1/8 [29]
1230, 1430 1630	3-1/4 [83]	3-1/4 [83]	17-3/8 [441]	1-1/8 [29]

1 ROW MULTI-CKT

UNIT SIZE	A	B	C	D
0606, 0806 1011, 0817 1017, 1217 0819, 1019 1219, 0811	7-3/8 [187]	7-3/8 [187]	12-3/4 [324]	1-1/8 [29]
1021, 1221 1421	7-3/8 [187]	7-3/8 [187]	15-3/8 [390]	4-1/8 [105]
1224, 1424	7-3/8 [187]	7-3/8 [187]	17-3/8 [441]	1-1/8 [29]
1230, 1430 1630	3-1/4 [83]	3-1/4 [83]	17-3/8 [441]	1-1/8 [29]

2 ROW STD

UNIT SIZE	A	B	C	D
0606, 0806 1011, 0817 1017, 1217 0819, 1019 1219, 0811	6-7/8 [175]	6-7/8 [175]	12-3/4 [324]	1-1/2 [38]
1021, 1221 1421	6-7/8 [175]	6-7/8 [175]	15-3/4 [400]	4-1/2 [114]
1224, 1424	6-7/8 [175]	6-7/8 [175]	17-3/4 [451]	1-1/2 [38]
1230, 1430 1630	3-1/4 [83]	3-1/4 [83]	17-3/4 [451]	1-1/8 [29]

2 ROW MULTI-CKT

UNIT SIZE	A	B	C	D
0606, 0806 1011, 0817 1017, 1217 0819, 1019 1219, 0811	7-3/8 [187]	6-3/8 [162]	12-7/8 [327]	1-1/4 [32]
1021, 1221 1421	7-3/8 [187]	6-3/8 [162]	15-7/8 [403]	4-1/4 [108]
1224, 1424	7-3/8 [187]	6-3/8 [162]	17-7/8 [454]	1-1/4 [32]
1230, 1430 1630	3-1/4 [83]	2-1/8 [54]	17-7/8 [454]	1-1/4 [32]

NOTES:

1. All dimensions are Inches [millimeters].
2. All dimensions are ±1/2" [13mm]. Metric values are soft conversion.
3. All connections are ODM sweat unless otherwise noted.

CONNECTION SIZES

COIL ROWS	STANDARD	MULTI-CKT
1 ROW	1/2"[13]	5/8"[16]
2 ROW	5/8"[16]	5/8"[16]

TITLE:

MODEL CFRQ-WC
WATER COIL CONNECTIONS
1 AND 2 ROWS
ARGT 1 & 2

EC2873



ENVIRO-TEC®

DRN BY: CBALDWE	DATE: 07/24/14	SCALE: 1=1	DRAWING NO.
CKD BY: HANK	DATE: 07/31/15	REV: 02	

THIS DRAWING CONTAINS PROPRIETARY DATA.
UNAUTHORIZED DISCLOSURE, REPRODUCTION, OR USE
IS STRICTLY PROHIBITED WITHOUT WRITTEN PERMISSION

DO NOT SCALE DRAWING
DIMENSIONS AND DATA ARE SUBJECT TO CHANGE WITHOUT NOTICE.
CONTACT FACTORY FOR CERTIFIED DRAWINGS.

33-80033