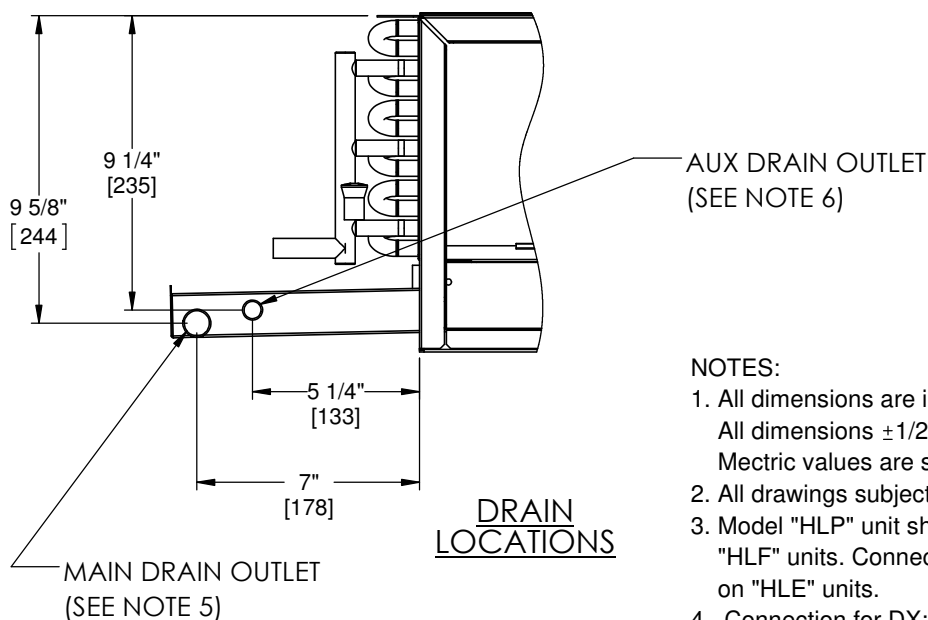
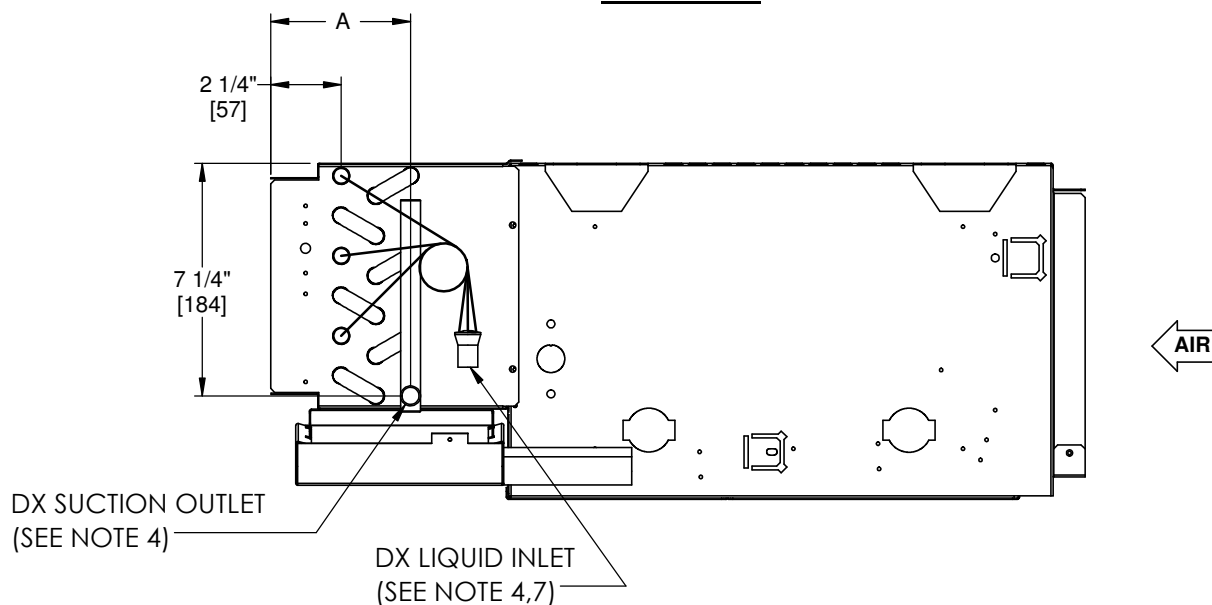


## 2 PIPE COOLING LEFT HAND



### NOTES:

1. All dimensions are inches [millimeters]  
All dimensions  $\pm 1/2"$  [13mm].  
Metric values are soft conversion.
2. All drawings subject to change without notice.
3. Model "HLP" unit shown, typical for model "HLF" units. Connections shown are internal on "HLE" units.
4. Connection for DX:  
DX Liquid Inlet: 5/8" ODM copper (1/2" NOM)  
Suction Outlet: 5/8" ODM copper (1/2" NOM)
5. Standard externally foam coated galvanized steel drain pan has 7/8" ODM copper outlet.  
Stainless steel drain pan has 3/4" MPT galvanized steel outlet.
6. Aux. drain outlet is 5/8" ODM copper or 3/8" MPT galvanized steel respectively. Aux. drain outlet is located to the inside of Main Drain Outlet on drain pan, regardless of unit hand.
7. Liquid Inlet arrangement may vary.

UNIT TYPE	COIL ROWS	A
2 PIPE COOLING	2	$3\frac{1}{4}"$ [83]
	3	$4\frac{3}{8}"$ [111]
	4	$5\frac{1}{2}"$ [140]
	5	$6\frac{5}{8}"$ [168]



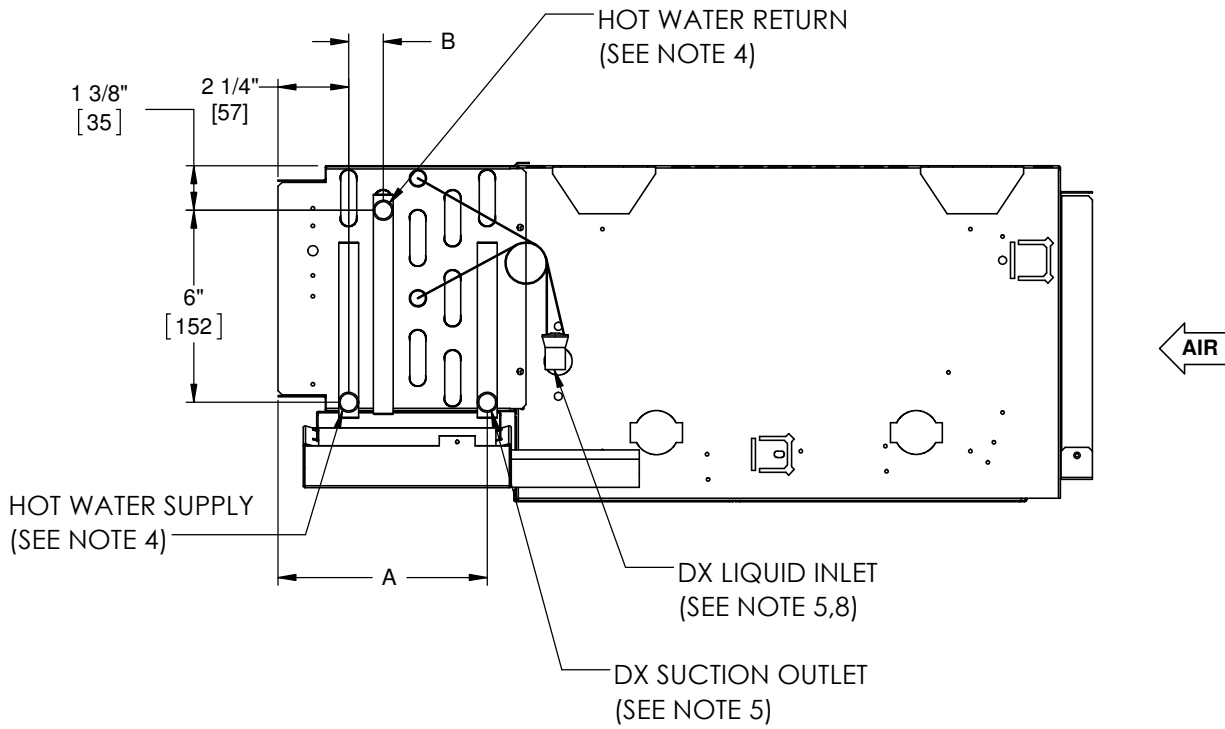
THIS DRAWING CONTAINS PROPRIETARY DATA. UNAUTHORIZED DISCLOSURE, REPRODUCTION, OR USE IS STRICTLY PROHIBITED WITHOUT WRITTEN PERMISSION.

**SUBMITTAL DRAWING**  
ALL DRAWINGS ARE SUBJECT TO CHANGE WITHOUT PRIOR NOTICE

**DO NOT SCALE DRAWING**  
DIMENSIONS ARE IN INCH [MM] FORMAT  
+/- .18 [3] UNLESS OTHERWISE NOTED

TITLE: **MODEL HLP/F FAN COIL UNIT SERIES D  
DX/HW COIL CONNECTION LOCATIONS**

DATE	SHEET	DRAWING NO	REV
3/22/2017	PAGE 1 OF 4	47-80136	00



**4 PIPE DX/HW RE-HEAT  
LEFT HAND**

**NOTES:**

1. All dimensions are inches [millimeters]  
All dimensions  $\pm 1/2$  [13mm].  
Metric values are soft conversion.
2. All drawings subject to change without notice.
3. Model "HLP" unit shown, typical for model "HLF" units. Connections shown are internal on "HLE" units.
4. Connection Size:  
Hot Water Supply: 5/8 ODM (1/2" NOM.)  
Hot Water Return: 5/8 ODM (1/2" NOM.)
5. Connection for DX:  
DX Liquid Inlet: 5/8" ODM copper (1/2" NOM)  
Suction Outlet: 5/8" ODM copper (1/2" NOM)
6. Standard externally foam coated galvanized steel drain pan has 7/8" ODM copper outlet.  
Stainless steel drain pan has 3/4" MPT galvanized steel outlet.
7. Aux. drain outlet is 5/8" ODM copper or 3/8" MPT galvanized steel respectively. Aux. drain outlet is located to the inside of Main Drain Outlet on drain pan, regardless of unit hand.
8. Liquid Inlet arrangement may vary

**4 PIPE DX/HW RE-HEAT**

Coil 1 Rows	A	Coil 2 Rows	B
2	4 3/8" [111]	1	1" [25]
3	5 1/2" [140]	1	1" [25]
4	7 5/8" [194]	1	1" [25]
2	4 3/8" [111]	2	1 1/8" [29]
3	5 1/2" [140]	2	1 1/8" [29]



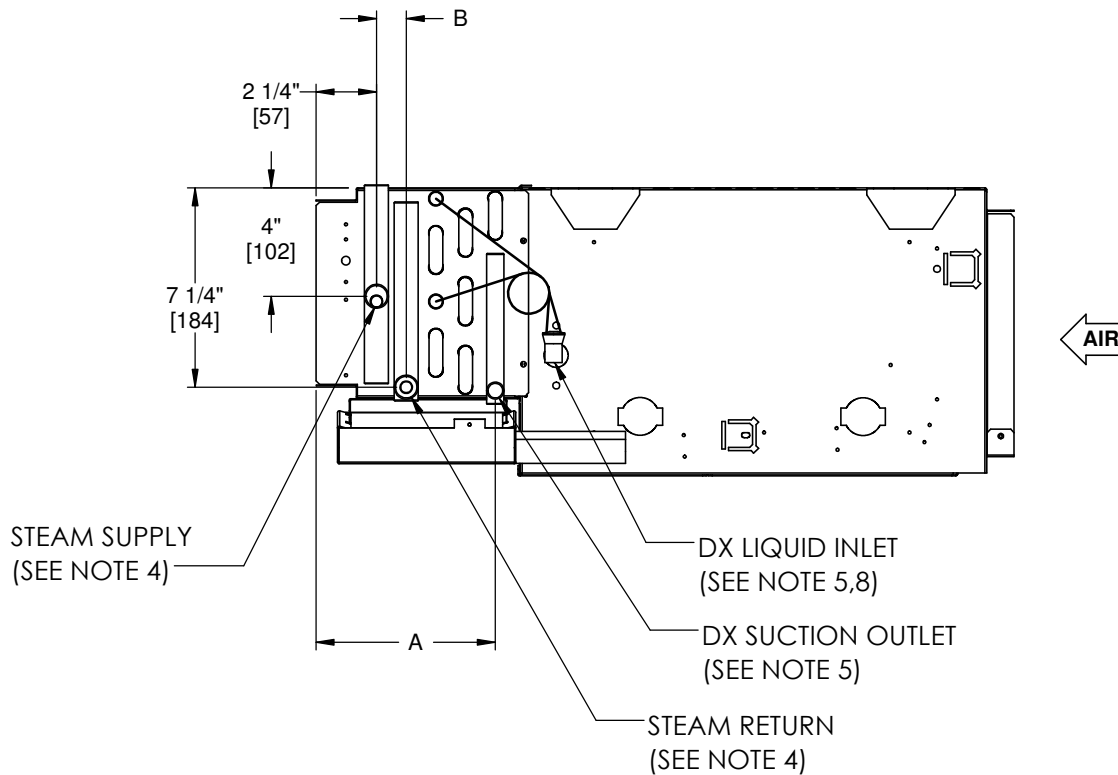
THIS DRAWING CONTAINS PROPRIETARY DATA. UNAUTHORIZED DISCLOSURE, REPRODUCTION, OR USE IS STRICTLY PROHIBITED WITHOUT WRITTEN PERMISSION.

**SUBMITTAL DRAWING**  
ALL DRAWINGS ARE SUBJECT TO CHANGE WITHOUT PRIOR NOTICE

**DO NOT SCALE DRAWING**  
DIMENSIONS ARE IN INCH (MM) FORMAT  
+/- 1/8 (3) UNLESS OTHERWISE NOTED

TITLE: **MODEL HLP/F FAN COIL UNIT SERIES D  
DX/HW COIL CONNECTION LOCATIONS**

DATE	SHEET	DRAWING NO	REV
3/22/2017	PAGE 2 OF 4	47-80136	00



### 4 PIPE DX/2R-STEAM RE-HEAT LEFT HAND

**NOTES:**

1. All dimensions are inches [millimeters]  
All dimensions  $\pm 1/2$  [13mm].  
Metric values are soft conversion.
2. All drawings subject to change without notice.
3. Model "HLP" unit shown, typical for model "HLF" units. Connections shown are internal on "HLE" units.
4. Connection Size:  
Steam Supply: 7/8 ODM (3/4" NOM.)  
Steam Return: 7/8 ODM (3/4" NOM.)
5. Connection for DX:  
DX Liquid Inlet: 5/8" ODM copper (1/2" NOM)  
Suction Outlet: 5/8" ODM copper (1/2" NOM)
6. Standard externally foam coated galvanized steel drain pan has 7/8" ODM copper outlet.  
Stainless steel drain pan has 3/4" MPT galvanized steel outlet.
7. Aux. drain outlet is 5/8" ODM copper or 3/8" MPT galvanized steel respectively. Aux. drain outlet is located to the inside of Main Drain Outlet on drain pan, regardless of unit hand.
8. Liquid Inlet arrangement may vary.

#### 4 PIPE DX/2R-STEAM RE-HEAT

Coil 1 Rows	A	Coil 2 Rows	B
2	5 1/2" [140]	2	1 1/8" [29]
3	6 1/2" [165]	2	1 1/8" [29]



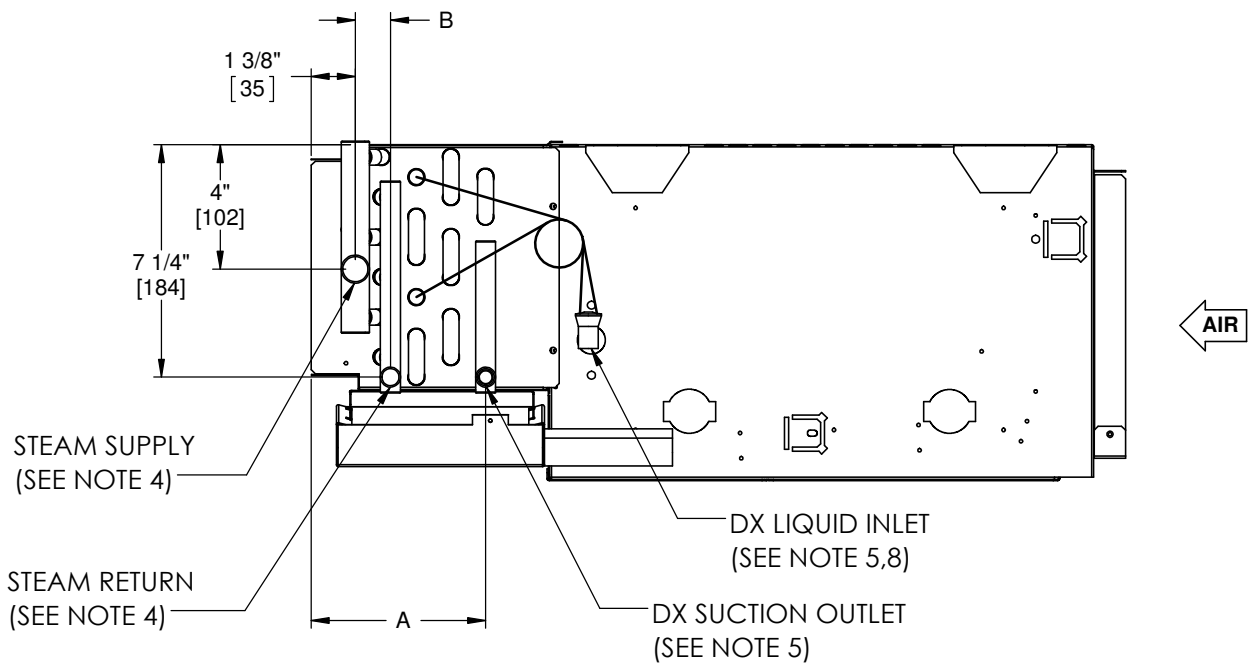
THIS DRAWING CONTAINS PROPRIETARY DATA. UNAUTHORIZED DISCLOSURE, REPRODUCTION, OR USE IS STRICTLY PROHIBITED WITHOUT WRITTEN PERMISSION.

**SUBMITTAL DRAWING**  
ALL DRAWINGS ARE SUBJECT TO CHANGE WITHOUT PRIOR NOTICE

**DO NOT SCALE DRAWING**  
DIMENSIONS ARE IN INCH [MM] FORMAT  
+/- 1/8 [3] UNLESS OTHERWISE NOTED

**TITLE:**  
**MODEL HLP/F FAN COIL UNIT SERIES D  
DX/STM 2R COIL CONNECTION LOCATIONS**

DATE	SHEET	DRAWING NO	REV
3/22/2017	PAGE 3 OF 4	47-80136	00



**4 PIPE DX/1R-STEAM RE-HEAT**  
**LEFT HAND**

NOTES:

1. All dimensions are inches [millimeters]  
All dimensions  $\pm 1/2$  [13mm].  
Metric values are soft conversion.
2. All drawings subject to change without notice.
3. Model "HLP" unit shown, typical for model "HLF" units. Connections shown are internal on "HLE" units.
4. Connection Size:  
Steam Supply: 7/8 ODM (3/4" NOM.)  
Steam Return: 5/8 ODM (1/2" NOM.)
5. Connection for DX:  
DX Liquid Inlet: 5/8" ODM copper (1/2" NOM)  
Suction Outlet: 5/8" ODM copper (1/2" NOM)
6. Standard externally foam coated galvanized steel drain pan has 7/8" ODM copper outlet.  
Stainless steel drain pan has 3/4" MPT galvanized steel outlet.
7. Aux. drain outlet is 5/8" ODM copper or 3/8" MPT galvanized steel respectively. Aux. drain outlet is located to the inside of Main Drain Outlet on drain pan, regardless of unit hand.
8. Liquid Inlet arrangement may vary.

**4 PIPE DX/1R-STEAM RE-HEAT**

Coil 1 Rows	A	Coil 2 Rows	B
2	4 3/8" [111]	1	1 1/8" [29]
3	5 1/2" [140]	1	1 1/8" [29]
4	6 5/8" [168]	1	1 1/8" [29]



THIS DRAWING CONTAINS PROPRIETARY DATA. UNAUTHORIZED DISCLOSURE, REPRODUCTION, OR USE IS STRICTLY PROHIBITED WITHOUT WRITTEN PERMISSION.

**SUBMITTAL DRAWING**  
ALL DRAWINGS ARE SUBJECT TO CHANGE WITHOUT PRIOR NOTICE

**DO NOT SCALE DRAWING**  
DIMENSIONS ARE IN INCH (MM) FORMAT  
+/- 1/8 (3) UNLESS OTHERWISE NOTED

TITLE: **MODEL HLP/F FAN COIL UNIT SERIES D  
DX/STM 1R COIL CONNECTION LOCATIONS**

DATE	SHEET	DRAWING NO	REV
3/22/2017	PAGE 4 OF 4	47-80136	00