

General Specifications:

- Casing fabricated with a minimum of 20 gauge Galvanized steel using mechanical lock, low leakage construction.
- Valve casing fabricated with a minimum of 18 gauge Galvanized steel.
- Inlet air sensor is FlowStar multi-axis center averaging with external balancing taps.
- Damper shaft fabricated from solid fiber reinforced composite material.
- Damper blade is constructed with a closed cell gasket, between dual 22 gauge galvanized sheet metal damper blades mechanically fastened together.
- Box insulation is:
 - 1/2" Thick, fiberglass complying with NFPA 90A and UL 181 with all edges sealed. (Standard)
 - 1/2" Thick foil face fiberglass with scrim reinforcing, complying with NFPA 90A and UL 181 with all edges taped. (Optional)

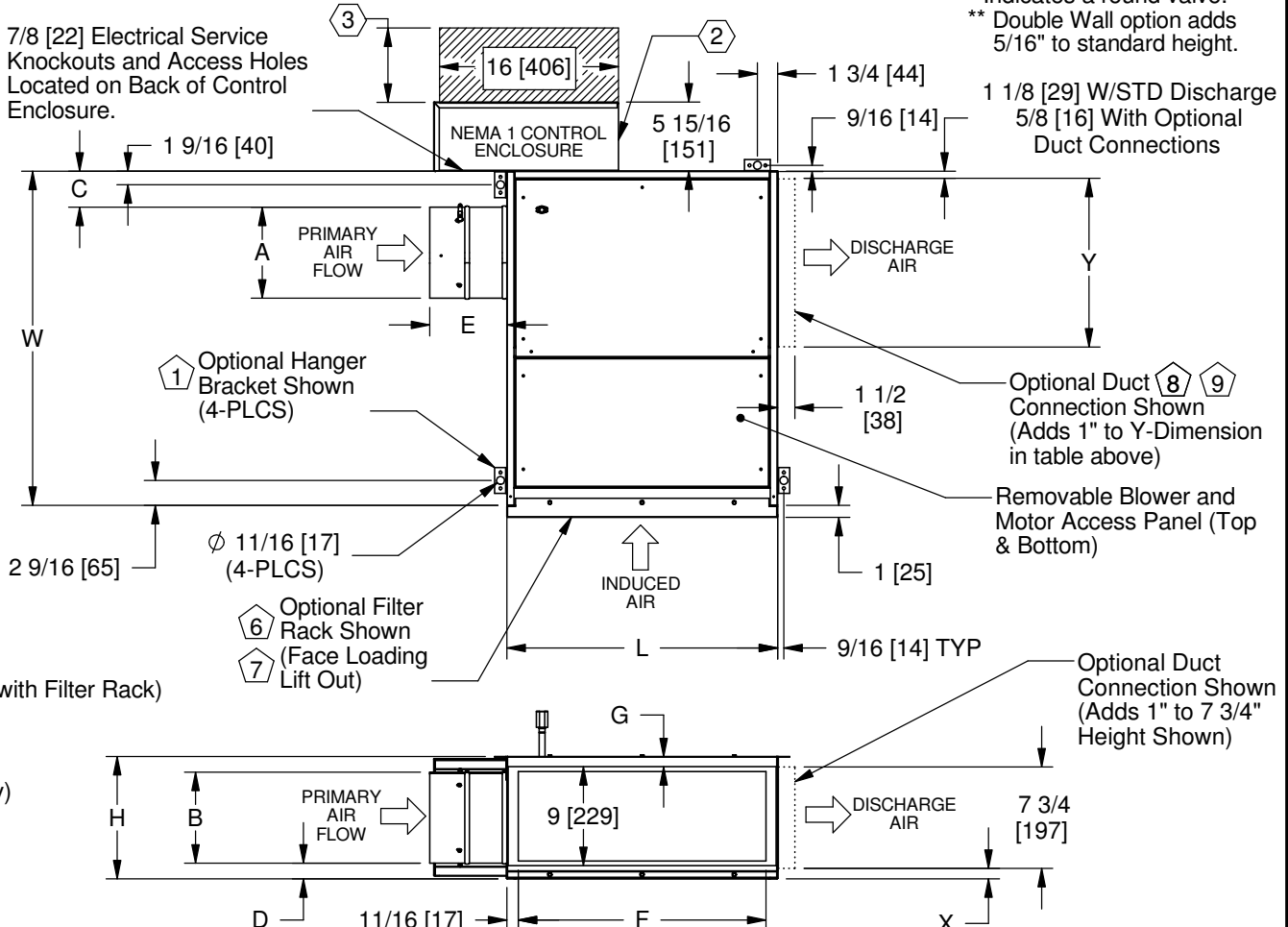
General Notes:

- All dimensions are in inches [mm] with a tolerance of ±1/8 [3].
- Control enclosure is standard with electronic controls.
- Check all national and local codes for required clearance.

Optional Features:

- Hanger Brackets
- Galvanized Steel Double Wall Liners
- Reduced Valve by 1 Size
- Reduced Valve by 2 Sizes (Fan size 5 Only)
- Reduced Valve by 3 Sizes (Fan Size 5 Only)
- Filter Rack with Filter
 - 1" Throw Away Filter (Standard with Filter Rack)
- Slip and Drive (Optional - Induction Inlet, Not Available with Filter Rack)
- Slip and Drive (Optional - Discharge Outlet)
 - NOTE: Adds 1" to Y Dimension in table above.
 - Discharge Height = 8 3/4" [222].
- 1 1/2" [38] Duct Collar (Optional - Discharge Outlet Only)
 - NOTE: Adds 1" to Y Dimension in table above.
 - Discharge Height = 8 3/4" [222].

AVAILABLE PRIMARY AIR INLET VALVE SIZES																				FAN SIZE	WIDTH W	HEIGHT H **	LENGTH L	INDUCTION AIR INLET		DISCHARGE AIR OUTLET		FILTER DIMENSIONS		WEIGHT LB [KG]				
STANDARD					REDUCED 1 SIZE (3)					REDUCED 2 SIZES (4)					REDUCED 3 SIZES (5)									F	G	X	Y	SINGLE WALL	DOUBLE WALL					
SIZE	A	B	C	D	E	SIZE	A	B	C	D	E	SIZE	A	B	C	D	E	SIZE	A											B	C	D	E	
08	8" [203]	8" [203]	3 1/8 [79]	1 5/16 [33]	6 11/16 [170]	06	6" [152]	6" [152]	4 1/8 [105]	2 5/16 [59]	6 11/16 [170]	05	5" [127]	5" [127]	4 5/8 [117]	2 13/16 [71]	10 1/2 [267]	04	4" [102]	4" [102]	5 1/8 [130]	3 5/16 [84]	10 1/2 [267]	05	29 [737]	10 5/8 [270]	23 1/2 [597]	22 1/8 [562]	13/16 [21]	1 7/16 [37]	13 5/8 [346]	1 x 9 3/4 x 23 1/2 [25 x 248 x 597]	58 [26]	72 [33]
12	14 [356]	8 [203]	2 1/2 [64]	1 5/16 [33]	6 1/2 [165]	10	10 [245]	8 [203]	2 1/2 [64]	1 5/16 [33]	6 1/2 [165]													09	36 [914]	10 5/8 [270]	36 [914]	34 5/8 [879]	13/16 [21]	1 7/16 [37]	16 [406]	1 x 9 3/4 x 36 [25 x 248 x 914]	86 [39]	109 [49]
14	14 [356]	10 [254]	2 1/2 [64]	1 [25]	6 1/2 [165]	12	14 [356]	8 [203]	2 1/2 [64]	2 [51]	6 1/2 [165]													15	40 [1016]	12 [305]	40 [1016]	38 5/8 [981]	1 1/2 [38]	2 1/8 [54]	20 [508]	1 x 10 1/2 x 40 [25 x 267 1016]	118 [54]	152 [69]



THIS DRAWING CONTAINS PROPRIETARY DATA. UNAUTHORIZED DISCLOSURE, REPRODUCTION, OR USE IS STRICTLY PROHIBITED WITHOUT WRITTEN PERMISSION.

SUBMITTAL DRAWING

ALL DRAWINGS ARE SUBJECT TO CHANGE WITHOUT PRIOR NOTICE

DO NOT SCALE DRAWING

DIMENSIONS ARE IN INCHES UNLESS OTHERWISE NOTED

TITLE: **MODEL VFL LOW HEIGHT PARALLEL FLOW FAN POWERED TERMINAL**

DATE	SHEET	DRAWING NO	REV
11/29/10	1 OF 1	07-80004	08