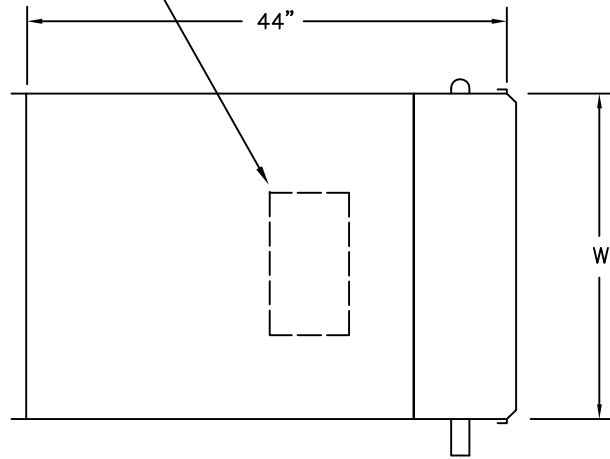


4" [102] X 8" [203] BOTTOM ACCESS

DIMENSIONAL DATA

ATTENUATOR FOR UNIT SIZE	W
19	30" [762]
22	34" [864]

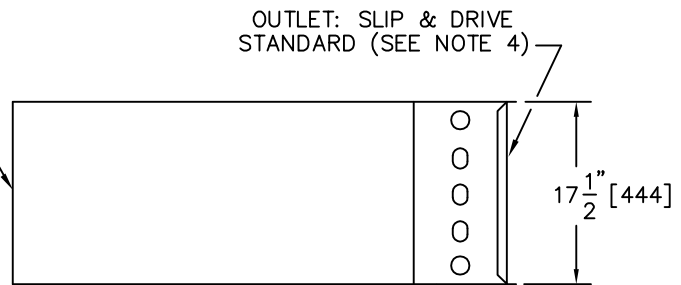
TOP VIEW



SUPPLY & RETURN WATER CONNECTION
RIGHT HAND MOUNT (AS SHOWN) - STANDARD
(SEE NOTE 3)

NOTE: SA-WC UNIT SHIPS SEPARATE
FROM TERMINAL & REQUIRES
FIELD CONNECTION (BY OTHERS)

FIELD CONNECTION
(BY OTHERS-
SEE NOTE 4)
SIDE
VIEW



HOT WATER COIL
(SEE NOTE 3)

NOTE:
SA UNIT SHIPS SEPARATE
FROM TERMINAL & REQUIRES
FIELD CONNECTION (BY OTHERS)

CONSTRUCTION NOTES:

1. All dimensions are Inches [millimeters]. All dimensions are $\pm 1/4"$ [6mm]. Metric values are soft conversion.
2. MATERIAL: Galvanized steel; Casing -22 gauge.
3. INSULATION: $1/2"$ [13] thick fiberglass complying with NFPA 90-A and UL 181.
4. INSTALLATION: A) If internal insulation is utilized in the downstream ductwork, the insulation must be secured in such a manner that no raw insulation edges are exposed to the airstream.
B) Field connection of attenuator unit with sheet metal screws on each side and sealer on all four sides.

TITLE:

MODEL SDR-SA-WC-AD SINGLE DUCT
TERMINAL UNIT - SZ 19 & 22
SOUND ATTENUATOR W/WATER COIL
FOR CONNECTION TO MODEL SDR



DRN BY: SM	DATE: 10/06/03	SCALE: N/A	DRAWING NO.
CKD BY: DPB	DATE: 12/13/12	REV: 01	

04-80001

THIS DRAWING CONTAINS PROPRIETARY DATA.
UNAUTHORIZED DISCLOSURE, REPRODUCTION, OR USE
IS STRICTLY PROHIBITED WITHOUT WRITTEN PERMISSION

DO NOT SCALE DRAWING
DIMENSIONS AND DATA ARE SUBJECT TO CHANGE WITHOUT NOTICE.
CONTACT FACTORY FOR CERTIFIED DRAWINGS.