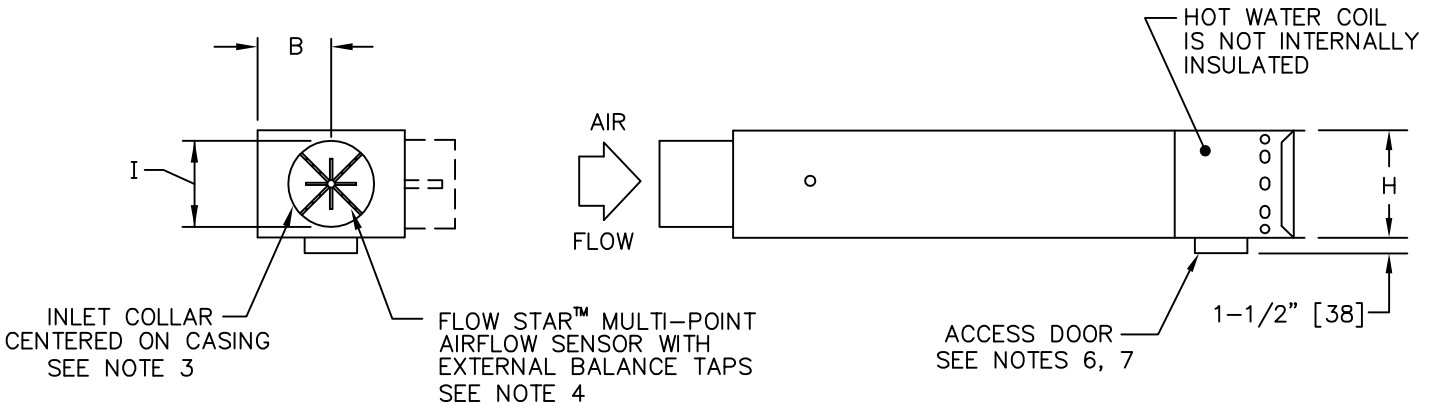
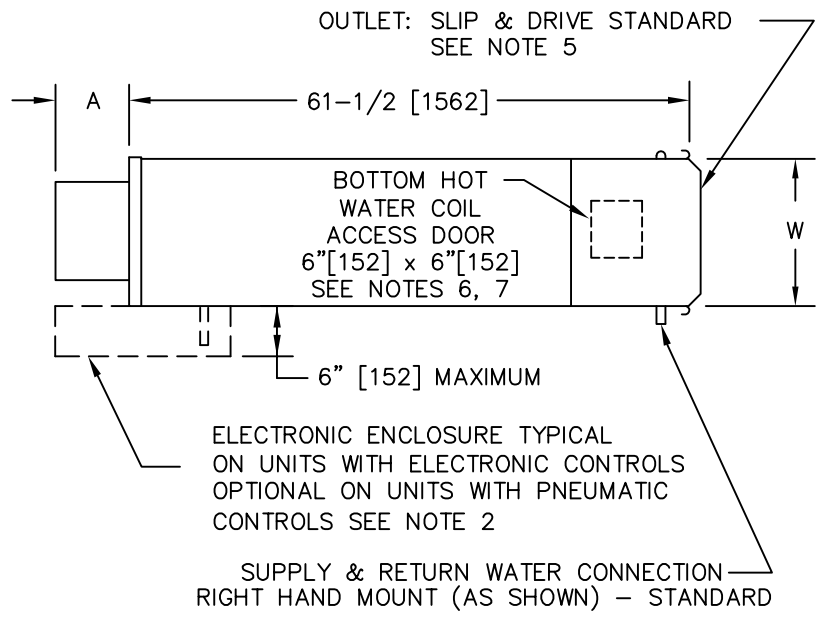


UNIT SIZE	W	H	A	I	B
4	10 [254]	10 [254]	10-1/2 [267]	3-7/8 [98]	5 [127]
5	10 [254]	10 [254]	10-1/2 [267]	4-7/8 [124]	5 [127]
6	10 [254]	10 [254]	6-1/2 [165]	5-7/8 [149]	5 [127]
8	12 [305]	10 [254]	6-1/2 [165]	7-7/8 [200]	6 [152]
10	14 [356]	12-1/2 [318]	6-1/2 [165]	9-7/8 [251]	7 [178]
12	16 [406]	15 [381]	6-1/2 [165]	11-7/8 [301]	8 [203]
14	20 [508]	17-1/2 [445]	6-1/2 [165]	13-7/8 [352]	10 [254]
16	24 [610]	17-1/2 [445]	6-1/2 [165]	15-7/8 [403]	12 [305]



(CONTROL ENCLOSURE NOT SHOWN THIS VIEW)

CONSTRUCTION NOTES:

1. All dimensions are in inches [millimeters]. All dimensions are +/- 1/4" [6mm]. Metric values are soft conversion.
2. Provide sufficient clearance to permit access to controls and comply with applicable codes and ordinances.
3. Inlet and outlet collars must be externally insulated in the field "by others", if required.
4. Sizes 4 & 5 use a single-axis multi-port averaging airflow sensor.
5. Units with internal insulation in downstream ductwork should have insulation secured with no raw edges exposed to the airstream.
6. Hot water coil access door: Double wall, insulated 24 gauge galvanized steel construction with perimeter gasketing and zinc plated steel spring cam fasteners. Access door assembly is mounted to allow external insulating of hot water coil casing.
7. Access panel: Actual opening is 1" [25] less than panel size.

TITLE: MODEL SDR-SA-WC WITH 6" X 6" RAISED ACCESS DOOR WITH ELECTRONIC ENCLOSURE			
DRN BY: JCR	DATE: 11/29/04	SCALE: 1=1	DRAWING NO.
CKD BY: DPB	DATE: 11/4/08	REV: 01	01-80023
THIS DRAWING CONTAINS PROPRIETARY DATA. UNAUTHORIZED DISCLOSURE, REPRODUCTION, OR USE IS STRICTLY PROHIBITED WITHOUT WRITTEN PERMISSION.		DO NOT SCALE DRAWING DIMENSIONS AND DATA ARE SUBJECT TO CHANGE WITHOUT NOTICE. CONTACT FACTORY FOR CERTIFIED DRAWINGS.	