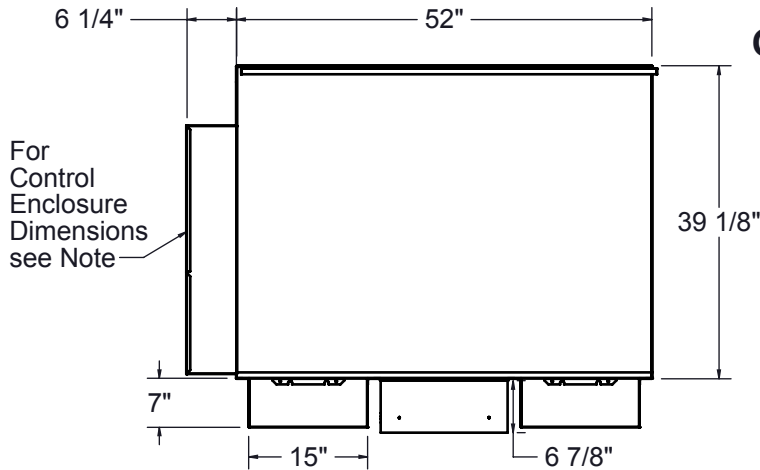


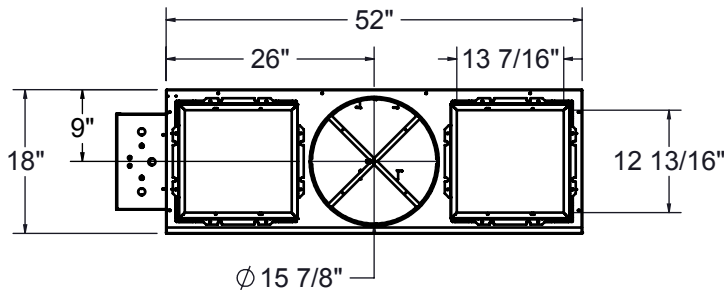
- Constructed of 20 Ga. galvanized steel
- 1/2" thick dual density fiberglass insulation meets requirements NFPA 90A and UL181
- Field adjustable fan speed control
- Easy access to internal components for maintenance via removable bottom panel
- Flo-cross sensor averages readings across all four quadrants of inlet
- 24 volt control transformer for electronic controls
- Induced air inlet attenuator
- **ETL listed; AHRI certified**



### Options:

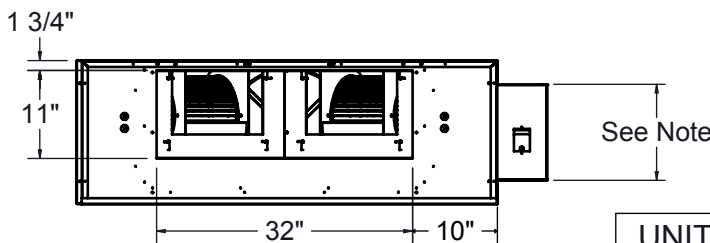
- Two 3/4HP PSC Motors (Standard)
  - 208V/240V      277V
- Two 1HP EON Motors
  - Manual Controls      Remote Controls
  - 208V/240V              277V
- Liners
  - 1/2" dual density fiberglass insulation
  - 1" dual density fiberglass insulation
  - 1/2" Enviroseal
  - 1" Enviroseal
  - 1" Insulguard
- Dust tight control enclosure
- Hangar brackets
- Motor disconnect
- Motor fusing
- Filter

### INLET VIEW



NOTE: Digital or Analog control enclosure  
20" x 11 7/8", Pneumatic 17" x 15"

### DISCHARGE VIEW



UNIT SIZE	INLET SIZE	PSC MOTOR HP	EON MOTOR HP
7	16	3/4 (2)	1 (2)

Dimensions in inches

Job: \_\_\_\_\_  
 Location: \_\_\_\_\_  
 Architect: \_\_\_\_\_  
 Engineer: \_\_\_\_\_  
 Contractor: \_\_\_\_\_

Tag: \_\_\_\_\_  
 Submitted By: \_\_\_\_\_  
 SD - 2184      Rev: B (03/17)

**FPS**  
**Fan-Powered Terminal Unit**  
**Series or Constant**  
**Size 7**