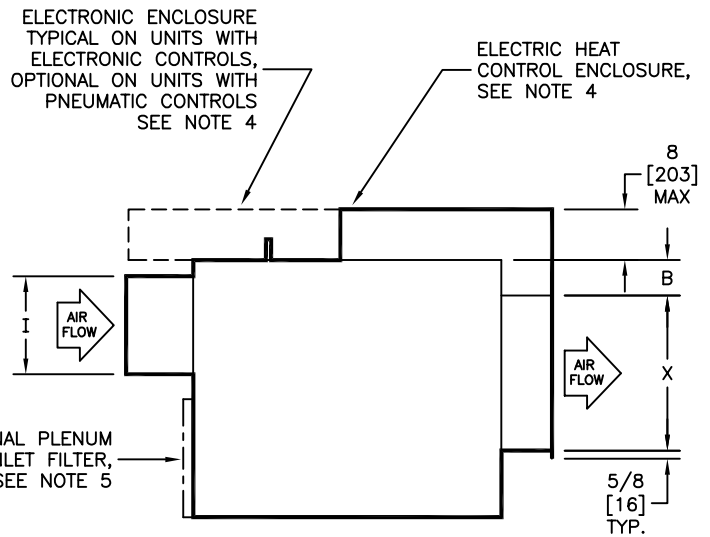


NOTES:

- All dimensions are Inches [millimeters]. All dimensions are $\pm 1/4"$ [6mm]. Metric values are soft conversion.
- All drawings subject to change without prior notice.
- Electric heater may extend to a total of 12" (305mm) depending on options.
- Provide sufficient clearance to permit access to controls and comply with applicable codes and ordinances.
- 1" [25mm] thick fiberglass TAW filter. See chart for sizes.
- Inlet collar and electric heater must be externally insulated in the field "by others", if required.
- Units with internal insulation in the downstream ductwork should have insulation secured with no raw edges exposed to the airstream.
- See drawing 33-80015 for arrangement details.

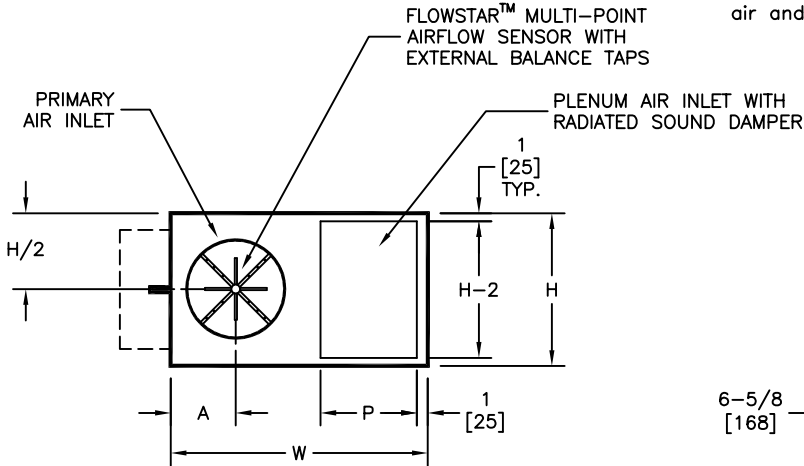
UNIT SIZE	FILTER SIZE	
	INCHES	[MM]
0606 Thru 0811	13 X 14 X 1	[330 X 356 X 25]
1011	11 X 14 X 1	[279 X 356 X 25]
0817 Thru 1421	15 X 17 X 1	[381 X 432 X 25]
1224 & 1424	19 X 19 X 1	[483 X 483 X 25]



TOP VIEW

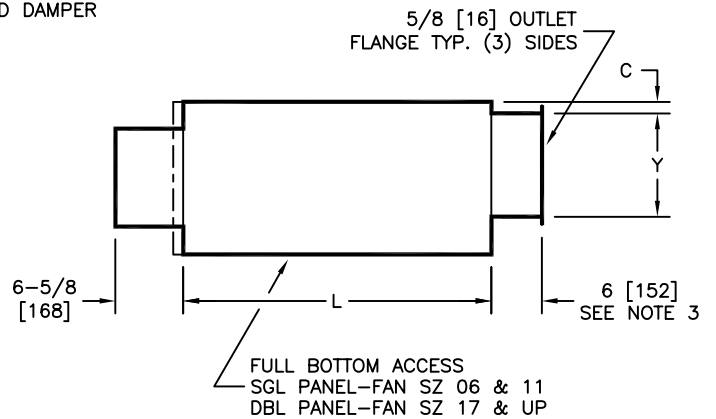
OPTION NOTES:

- Double wall (DW) option increases "L" dim. 1-1/2" [38mm] and reduces inlet and discharge collar length by 3/4" [19mm].
- Low temperature (LT) option provides a thermally isolated primary inlet. Inlet collar length is reduced by 3/4" [19mm].
- Low temperature (LT) option is suitable for 46° F min. primary air and max. ambient conditions of 78° F and 60% RH.



INLET END VIEW

(Filter not shown this view)



SIDE VIEW

DIMENSIONS - In [mm]

UNIT SIZE	H	W	L	X	Y	A	B	C	P
0606, 0806, 0611, 0811	14 [356]	23-3/8 [594]	35 [889]	11 [279]	11 [279]	6 [152]	3-1/4 [83]	3/4 [19]	10-3/8 [264]
1011	14 [356]	23-3/8 [594]	35 [889]	11 [279]	11 [279]	7 [178]	3-1/4 [83]	3/4 [19]	8-3/8 [213]
0817, 1017, 1217	17 [432]	29-3/8 [746]	40 [1016]	15 [381]	13-1/2 [343]	8 [203]	3-7/8 [98]	3/4 [19]	12-3/8 [314]
0819, 1019, 1219	17 [432]	29-3/8 [746]	40 [1016]	15 [381]	13-1/2 [343]	8 [203]	3-1/2 [89]	3/4 [19]	12-3/8 [314]
1021, 1221, 1421	17 [432]	35-3/8 [899]	40 [1016]	15 [381]	13-1/2 [343]	9 [229]	11-1/2 [292]	2-3/4 [70]	12-3/8 [314]
1224, 1424	19 [483]	47-3/8 [1203]	50 [1270]	28 [711]	15 [381]	9 [229]	12 [305]	3-1/4 [83]	17 [432]

UNIT SIZE	I
06XX	5-7/8 [149]
08XX	7-7/8 [200]
10XX	9-7/8 [251]
12XX	11-7/8 [302]
14XX	13-7/8 [352]

UNIT SIZE: FIRST 2 DIGITS DENOTE PRIMARY INLET SIZE, SECOND 2 DIGITS DENOTE FAN AND CASING SIZE.

TITLE:

MODEL CFRQ-EH EXTRA QUIET SERIES FLOW FAN POWERED TERMINAL FAN SIZES 06 THRU 24, ARG T 1

DO NOT SCALE DRAWING

NOT FOR CONSTRUCTION, CONTACT FACTORY FOR CERTIFIED DRAWINGS. DIMENSIONS AND DATA ARE SUBJECT TO CHANGE WITHOUT NOTICE.



ENVIRO-TEC®

DRN BY: DVG	DATE: 4/6/09	SCALE: 1=24	DRAWING NO.
CKD BY: DPB	DATE: 3/31/16	REV: 01	

33-80040