

**DIMENSIONS**

UNIT SIZE	A	B
02	36 1/4" [921]	17 1/4" [438]
03	39 1/2" [1003]	20 1/2" [521]
04	44 1/2" [1130]	25 1/2" [648]
06	51 1/4" [1302]	32 1/4" [819]
08	58 1/4" [1480]	39 1/4" [997]
09	62 1/2" [1588]	43 1/2" [1105]
10	72 1/4" [1835]	53 1/4" [1353]
12	80 1/4" [2038]	61 1/4" [1556]

**NOTES:**

1. All dimensions are inches [millimeters]. All dimensions  $\pm 1/4"$  [6mm]. Metric values are soft conversions.
2. Left hand unit shown, right hand unit opposite.
3. Provide sufficient clearance to access electrical controls and comply with applicable codes and ordinances.
4. Drain piping should be routed through casing opening indicated to provide proper slope.
5. Bottom panel removable for access to filter and fan assembly.
6. Corner panels are removable to access electrical enclosure, coil and valve pack.
7. Internal insulation of field piping may be required.
8. Field piping casing penetrations must be cut in the field to match individual job requirements.
9. All dimensions also apply to units with Electric Heat Only.

UNCONTROLLED WHEN PRINTED



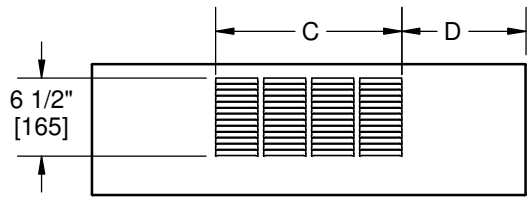
THIS DRAWING CONTAINS PROPRIETARY DATA. UNAUTHORIZED DISCLOSURE, REPRODUCTION, OR USE IS STRICTLY PROHIBITED WITHOUT WRITTEN PERMISSION.

**SUBMITTAL DRAWING**  
ALL DRAWINGS ARE SUBJECT TO CHANGE WITHOUT PRIOR NOTICE

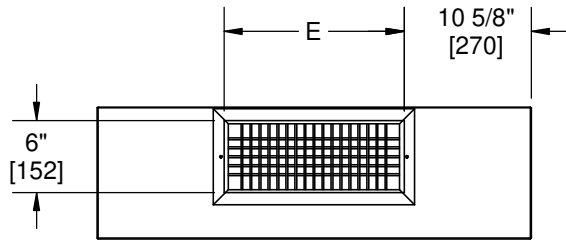
**DO NOT SCALE DRAWING**  
DIMENSIONS ARE IN INCH [MM] FORMAT +/- 1/8 [3] UNLESS OTHERWISE NOTED

TITLE: **MODEL HLE EXPOSED FAN COIL UNIT SERIES D BOTTOM RETURN**

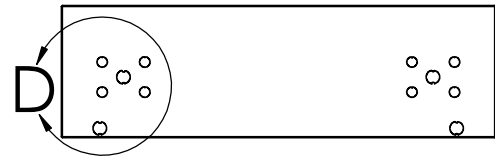
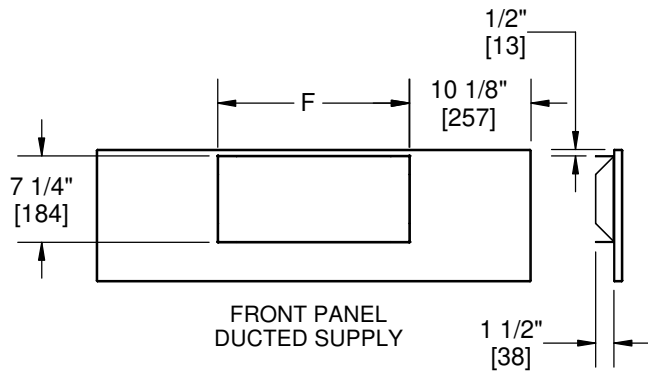
DATE	SHEET	DRAWING NO	REV
10/4/19	PAGE 1 OF 3	47-80117	B



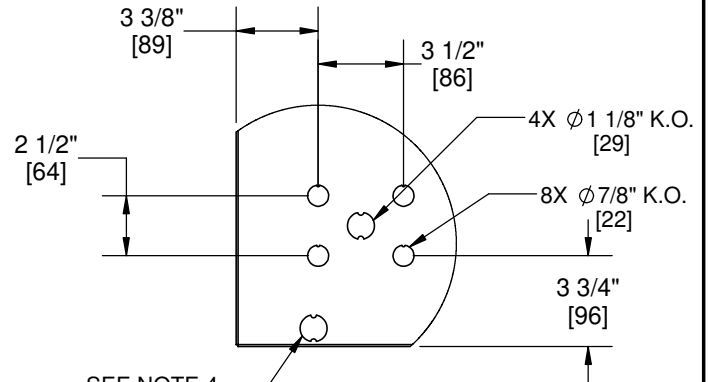
FRONT PANEL  
LOUVERED SUPPLY



FRONT PANEL  
DUCTED SUPPLY

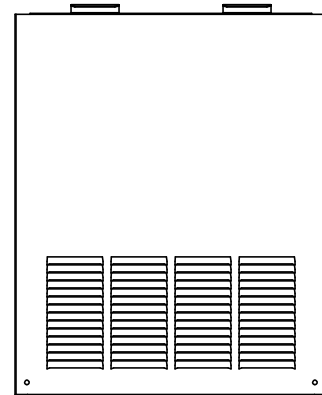


BACK PANEL  
BOTTOM RETURN



SEE NOTE 4

DETAIL D



BOTTOM PANEL  
BOTTOM RETURN

**DIMENSIONS**

UNIT SIZE	C	D	E	F
02	15 1/2" [394]	10 3/8" [264]	15" [381]	16" [406]
03	15 1/2" [394]	12" [305]	18" [457]	19 1/4" [489]
04	23 1/2" [597]	10 1/2" [267]	23" [584]	24 1/4" [616]
06	27 1/2" [699]	11 7/8" [302]	30" [762]	31" [787]
08	35 1/2" [902]	11 3/8" [289]	37" [940]	38" [965]
09	39 1/2" [1003]	11 1/2" [292]	41" [1041]	42 1/4" [1073]
10	51 1/2" [1308]	10 3/8" [264]	23" [584]	52" [1321]
12	59 1/2" [1511]	10 3/8" [264]	27" [686]	60" [1524]

**NOTES:**

1. All dimensions are inches [millimeters]. All dimensions  $\pm 1/4"$  [6mm]. Metric values are soft conversions.
2. Left hand unit shown, right hand unit opposite.
3. Provide sufficient clearance to access electrical controls and comply with applicable codes and ordinances.
4. Drain piping should be routed through casing opening indicated to provide proper slope.
5. Bottom panel removable for access to filter and fan assembly.
6. Corner panels are removable to access electrical enclosure, coil and valve pack.
7. Internal insulation of field piping may be required.
8. Field piping casing penetrations must be cut in the field to match individual job requirements.
9. All dimensions also apply to units with Electric Heat Only.

UNCONTROLLED WHEN PRINTED



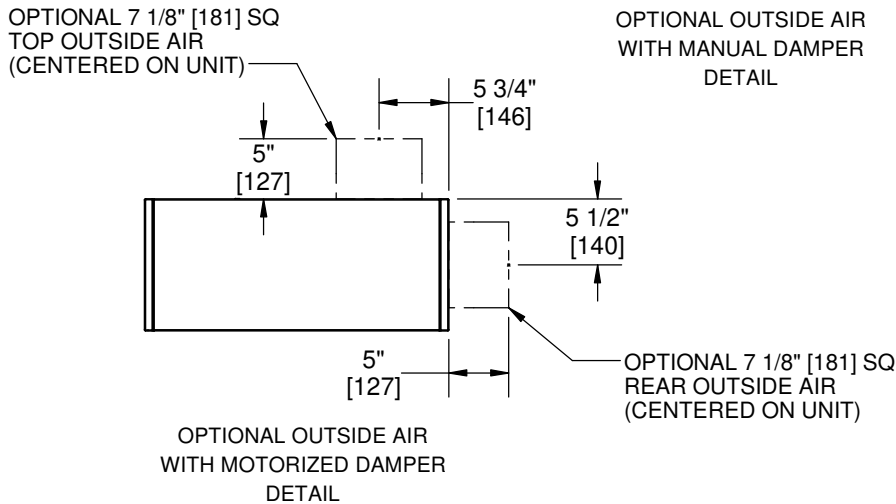
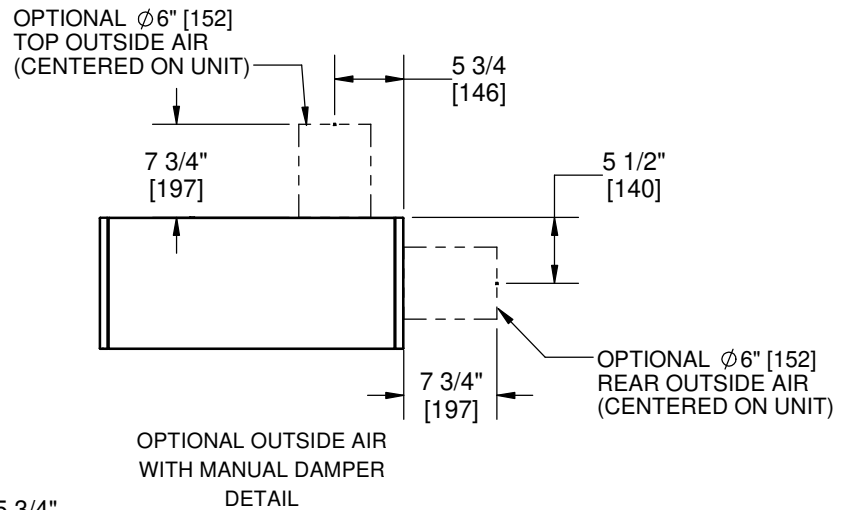
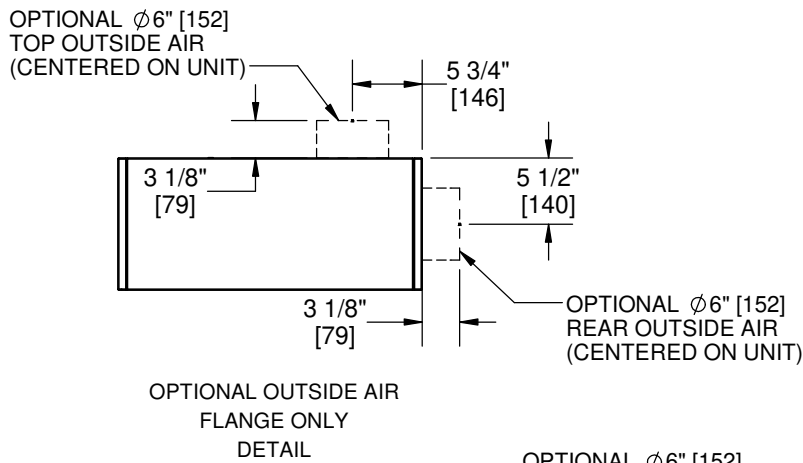
THIS DRAWING CONTAINS PROPRIETARY DATA. UNAUTHORIZED DISCLOSURE, REPRODUCTION, OR USE IS STRICTLY PROHIBITED WITHOUT WRITTEN PERMISSION.

**SUBMITTAL DRAWING**  
ALL DRAWINGS ARE SUBJECT TO CHANGE  
WITHOUT PRIOR NOTICE

**DO NOT SCALE DRAWING**  
DIMENSIONS ARE IN INCH [MM] FORMAT  
+/- 1/8 [3] UNLESS OTHERWISE NOTED

TITLE: **MODEL HLE EXPOSED FAN COIL UNIT  
SERIES D BOTTOM RETURN**

DATE	SHEET	DRAWING NO	REV
10/4/19	PAGE 2 OF 3	47-80117	B



1. All dimensions are inches [millimeters]. All dimensions  $\pm 1/4''$  [6mm]. Metric values are soft conversions.
2. Left hand unit shown, right hand unit opposite.
3. Provide sufficient clearance to access electrical controls and comply with applicable codes and ordinances.
4. Drain piping should be routed through casing opening indicated to provide proper slope.
5. Bottom panel removable for access to filter and fan assembly.
6. Corner panels are removable to access electrical enclosure, coil and valve pack.
7. Internal insulation of field piping may be required.
8. Field piping casing penetrations must be cut in the field to match individual job requirements.
9. All dimensions also apply to units with Electric Heat Only.

UNCONTROLLED WHEN PRINTED



THIS DRAWING CONTAINS PROPRIETARY DATA. UNAUTHORIZED DISCLOSURE, REPRODUCTION, OR USE IS STRICTLY PROHIBITED WITHOUT WRITTEN PERMISSION.

**SUBMITTAL DRAWING**  
ALL DRAWINGS ARE SUBJECT TO CHANGE  
WITHOUT PRIOR NOTICE

**DO NOT SCALE DRAWING**  
DIMENSIONS ARE IN INCH [MM] FORMAT  
+/- 1/8 [3] UNLESS OTHERWISE NOTED

TITLE: **MODEL HLE EXPOSED FAN COIL UNIT  
SERIES D BOTTOM RETURN**

DATE	SHEET	DRAWING NO	REV
10/4/19	PAGE 3 OF 3	47-80117	B