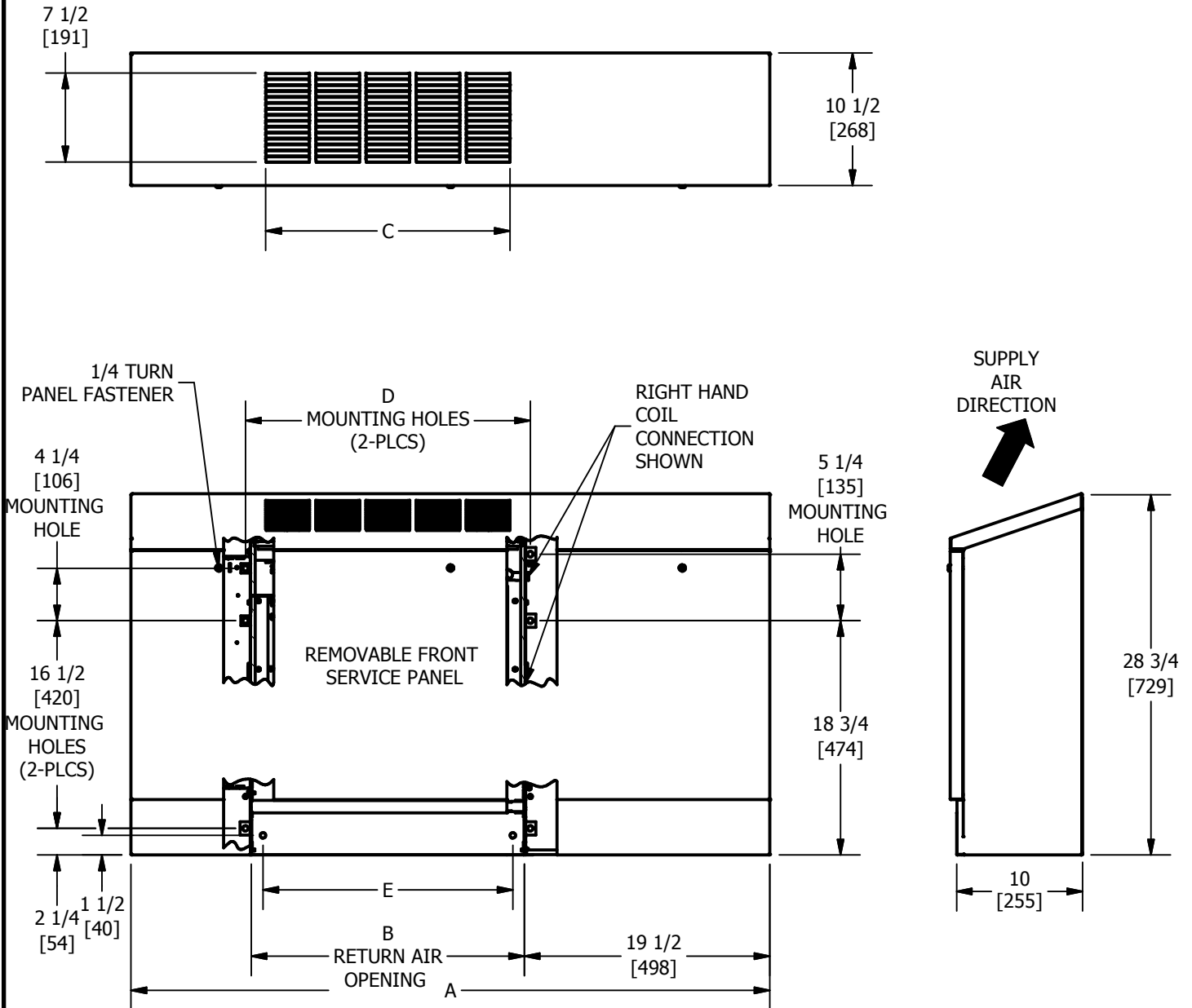


**NOTES:**

1. All dimensions are Inches [millimeters]. All dimensions are  $\pm 1/4"$  [6mm]. Metric values are soft conversion.
2. Junction box size and location varies with unit features. Control options may be limited. Provide sufficient clearance to access electrical controls and comply with applicable codes and ordinances.
3. Standard cabinet finish is "Pearl White Satin".
4. Parametric design available to increase Height. (See parametric offerings drawing.)
5. Some control or piping package options may require extended end pockets and/or extended drain pans.
6. False back extension available.
7. Right hand extended end pocket shown. Left hand unit similar, but opposite.

| TABLE      |           |           |               |               |           |
|------------|-----------|-----------|---------------|---------------|-----------|
| Column     | Column 2  | Column 3  | Column 4      | Column 5      | Column 6  |
| UNIT MODEL | DIM A     | DIM B     | DIM C         | DIM D         | DIM E     |
| 02         | 51 [1295] | 22 [559]  | 19 1/2 [495]  | 22 3/4 [578]  | 20 [508]  |
| 03         | 55 [1397] | 26 [660]  | 23 1/2 [597]  | 26 3/4 [679]  | 24 [607]  |
| 04         | 61 [1549] | 32 [813]  | 27 1/2 [699]  | 32 3/4 [832]  | 30 [762]  |
| 06         | 71 [1803] | 42 [1067] | 39 1/2 [1003] | 42 3/4 [1086] | 40 [1016] |
| 08         | 73 [1854] | 44 [1118] | 39 1/2 [1003] | 44 3/4 [1137] | 42 [1067] |
| 10         | 87 [2209] | 58 [1473] | 55 1/2 [1410] | 58 3/4 [1492] | 53 [1347] |
| 12         | 95 [2413] | 66 [1676] | 63 1/2 [1613] | 66 3/4 [1695] | 64 [1626] |



|              |                               |                  |                                |
|--------------|-------------------------------|------------------|--------------------------------|
|              | MODEL VFS, EXTENDED, SERIES C |                  |                                |
|              | DRN BY<br>AJM                 | DATE<br>08/05/15 | SCALE<br>N/A                   |
| CKD BY<br>ML | DATE<br>08/05/15              | REV<br>03        | DRAWING NO.<br><b>51-80083</b> |

THIS DRAWING CONTAINS PROPRIETARY DATA, UNAUTHORIZED DISCLOSURE, REPRODUCTION, OR USE IS STRICTLY PROHIBITED WITHOUT WRITTEN PERMISSION

**DO NOT SCALE DRAWING**  
DIMENSIONS AND DATA ARE SUBJECT TO CHANGE WITHOUT NOTICE.  
CONTACT FACTORY FOR CERTIFIED DRAWINGS.