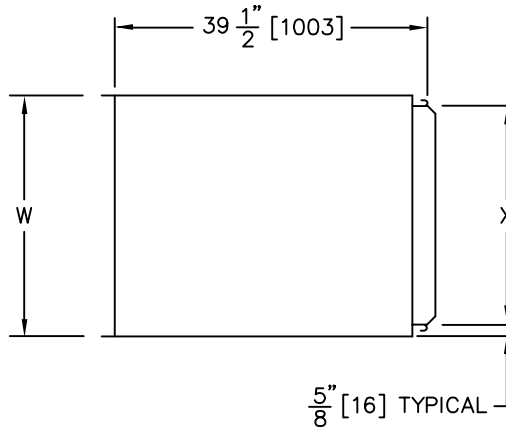


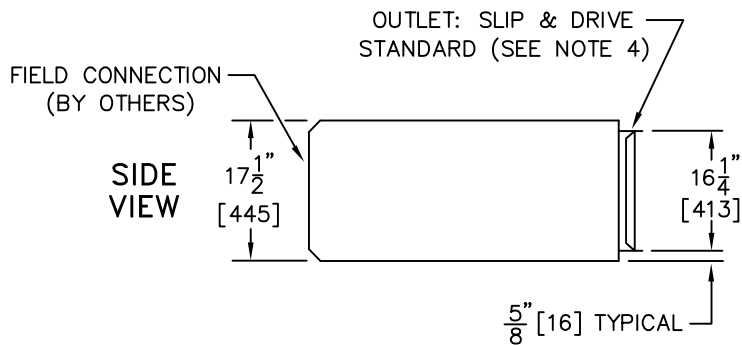
**DIMENSIONAL DATA**

ATTENUATOR FOR UNIT SIZE	W	X
19	30" [762]	28 <sup>3</sup> / <sub>4</sub> " [730]
22	34" [864]	32 <sup>3</sup> / <sub>4</sub> " [832]

TOP VIEW



SIDE VIEW



**NOTE:**

SA UNIT SHIPS SEPARATE FROM TERMINAL & REQUIRES FIELD CONNECTION (BY OTHERS)

**CONSTRUCTION NOTES:**

1. All dimensions are Inches [millimeters]. All dimensions are  $\pm 1/4$ " [6mm]. Metric values are soft conversion.
2. MATERIAL: Galvanized steel; Casing -22 gauge.
3. INSULATION: 1/2" [13] thick fiberglass complying with NFPA 90-A and UL 181.
4. INSTALLATION: A) If internal insulation is utilized in the downstream ductwork, the insulation must be secured in such a manner that no raw insulation edges are exposed to the airstream.  
B) Field connection of attenuator unit with sheet metal screws on each side and sealer on all four sides.

TITLE: MODEL SA SIZE 19 & 22  
SOUND ATTENUATOR FOR CONNECTION  
TO MODEL SDR OR SDREH



DRN BY: AWW	DATE: 11/30/92	SCALE: NONE	DRAWING NO.
CKD BY: Chris H	DATE: 05/23/06	REV: 04	15889

THIS DRAWING CONTAINS PROPRIETARY DATA.  
UNAUTHORIZED DISCLOSURE, REPRODUCTION, OR USE  
IS STRICTLY PROHIBITED WITHOUT WRITTEN PERMISSION

DO NOT SCALE DRAWING  
DIMENSIONS AND DATA ARE SUBJECT TO CHANGE WITHOUT NOTICE.  
CONTACT FACTORY FOR CERTIFIED DRAWINGS.