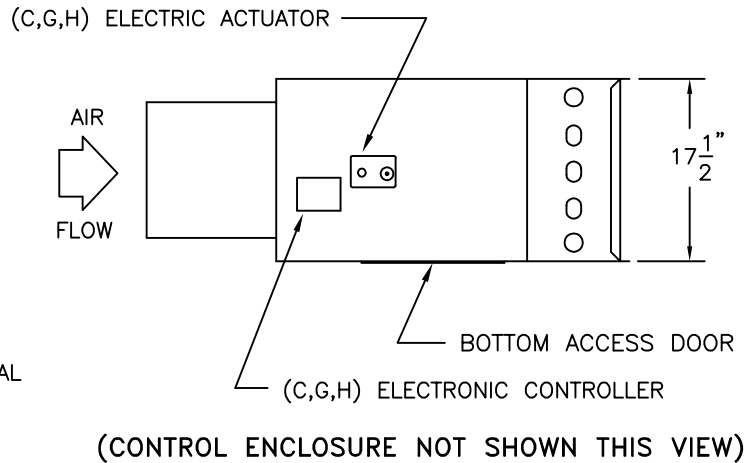
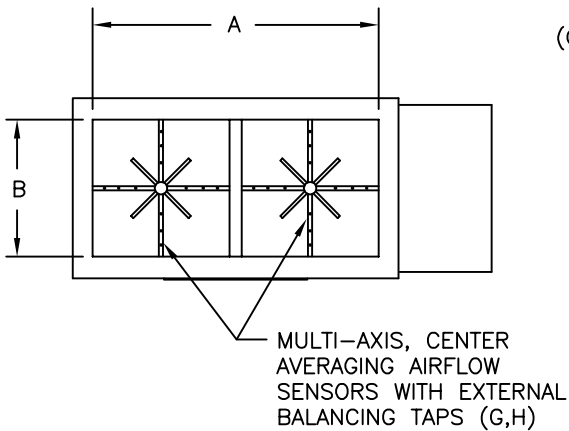
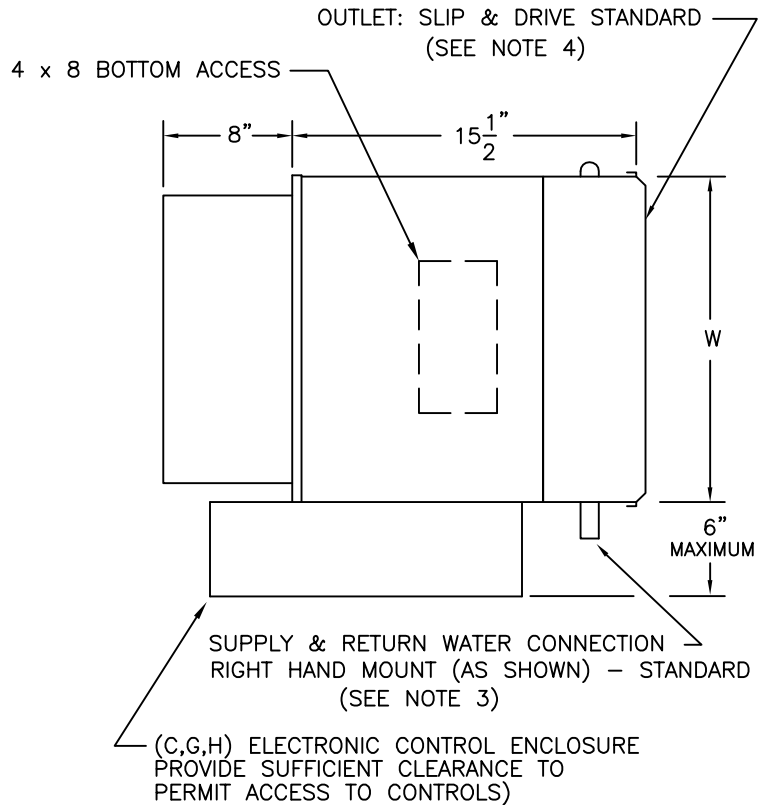


DIMENSIONAL DATA

UNIT SIZE	W	A	B
19	30 [762]	28-1/4 [718]	13-7/8 [352]
22	34 [864]	32-1/4 [819]	15-7/8 [403]



CONSTRUCTION NOTES:

- MATERIAL: Galvanized steel; Casing -22 gauge; Air valve casing -22 gauge.
- INSULATION: 1/2" thick fiberglass complying with NFPA 90-A and UL 181.
- HOT WATER COIL: Copper tubing with aluminum fins, 10 fins per inch. Supply and Return water connections: 1 Row coil: 1/2" O.D., 2 Row coil: 5/8" O.D., 3 & 4 Row coil: 7/8" O.D.. Coil to be externally insulated by others if required.
- INSTALLATION: A) If internal insulation is utilized in the downstream ductwork, the insulation must be secured in such a manner that no raw insulation edges are exposed to the airstream. B) Inlet collar & hot water coil should be externally insulated by others (in the field) if required.

(C) TEMPERATURE RESPONSIVE - SERIES SD600      (G) PRESSURE INDEPENDENT - SERIES SD700  
 (H) DIRECT DIGITAL PRESSURE INDEPENDENT - SERIES SD800 & SD900

TITLE: MODEL SDR-WC SINGLE DUCT  
 TERMINAL UNIT - SIZE 19-22  
 ELECTRONIC CONTROLS &  
 BOTTOM ACCESS DOOR



DRN BY: CCC	DATE: 4/16/12	SCALE: 1=1	DRAWING NO.
CKD BY: //	DATE: 04/16/12	REV: 02	21829

THIS DRAWING CONTAINS PROPRIETARY DATA.  
 UNAUTHORIZED DISCLOSURE, REPRODUCTION, OR USE  
 IS STRICTLY PROHIBITED WITHOUT WRITTEN PERMISSION

DO NOT SCALE DRAWING  
 DIMENSIONS AND DATA ARE SUBJECT TO CHANGE WITHOUT NOTICE.  
 CONTACT FACTORY FOR CERTIFIED DRAWINGS.