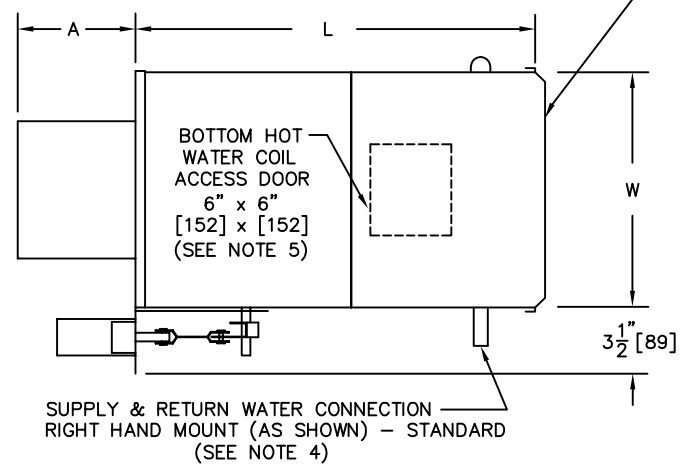
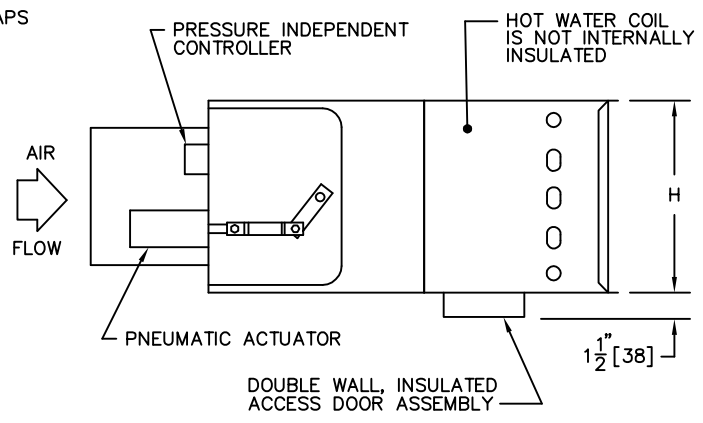
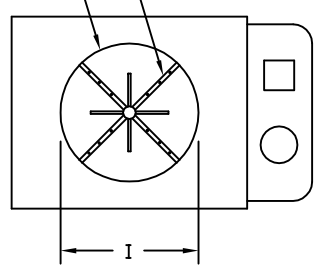


UNIT SIZE	W	H	L	A	I
4	10" [254]	10" [254]	22-1/2" [572]	10-1/2" [267]	3-7/8" [98]
5	10" [254]	10" [254]	22-1/2" [572]	10-1/2" [267]	4-7/8" [124]
6	10" [254]	10" [254]	22-1/2" [572]	6-1/2" [165]	5-7/8" [149]
8	12" [305]	10" [254]	22-1/2" [572]	6-1/2" [165]	7-7/8" [200]
10	14" [356]	12-1/2" [318]	24-1/2" [622]	6-1/2" [165]	9-7/8" [251]
12	16" [406]	15" [381]	24-1/2" [622]	6-1/2" [165]	11-7/8" [302]
14	20" [508]	17-1/2" [445]	28-1/2" [724]	6-1/2" [165]	13-7/8" [352]
16	24" [610]	17-1/2" [445]	28-1/2" [724]	6-1/2" [165]	15-7/8" [403]

OUTLET: SLIP & DRIVE STANDARD (SEE NOTE 7)



INLET COLLAR CENTERED ON CASING (SEE NOTE 7)
 FLOWSTAR™ MULTI-POINT AIRFLOW SENSOR WITH EXTERNAL BALANCE TAPS (SEE NOTE 6)



CONSTRUCTION NOTES:

- All dimensions are in inches [mm]. Metric values are soft conversion. All dimensions are ±1/4" [6mm].
- MATERIAL: Galvanized steel; External Casing -22 gauge; Air Valve Casing -22 gauge;
- INSULATION: 1/2" [13] thick fiberglass complying with NFPA 90-A and UL 181.
- HOT WATER COIL: Copper tubing with aluminum fins, 10 fins per inch. Supply and Return water connections: 1 Row coil: 1/2" [13] O.D., 2 Row coil: 5/8" [16] O.D., 3 & 4 Row coil: 7/8" [22] O.D. Coil to be externally insulated by others if required.
- HOT WATER COIL ACCESS DOOR: Double wall, insulated 24 gauge galvanized steel construction with perimeter gasketing and zinc plated steel cam fasteners. Access door assembly is mounted to allow external insulating of hot water coil casing.
- AIRFLOW SENSOR: Sizes 4 & 5 utilize single-axis linear averaging type.
- INSTALLATION: A) If internal insulation is utilized in the downstream ductwork, the insulation must be secured in such a manner that no raw insulation edges are exposed to the airstream. B) Inlet collar & hot water coil should be externally insulated by others (in the field) if required.

TITLE: MODEL SDR-WC-X
 RAISED ACCESS DOOR ASSEMBLY
 PNEUMATICS CONTROL



DRN BY: AWW	DATE: 9/10/02	SCALE: N/A	DRAWING NO.
CKD BY: Chris H	DATE: 5/23/06	REV: 02	19705

THIS DRAWING CONTAINS PROPRIETARY DATA. UNAUTHORIZED DISCLOSURE, REPRODUCTION, OR USE IS STRICTLY PROHIBITED WITHOUT WRITTEN PERMISSION.

DO NOT SCALE DRAWING. DIMENSIONS AND DATA ARE SUBJECT TO CHANGE WITHOUT NOTICE. CONTACT FACTORY FOR CERTIFIED DRAWINGS.