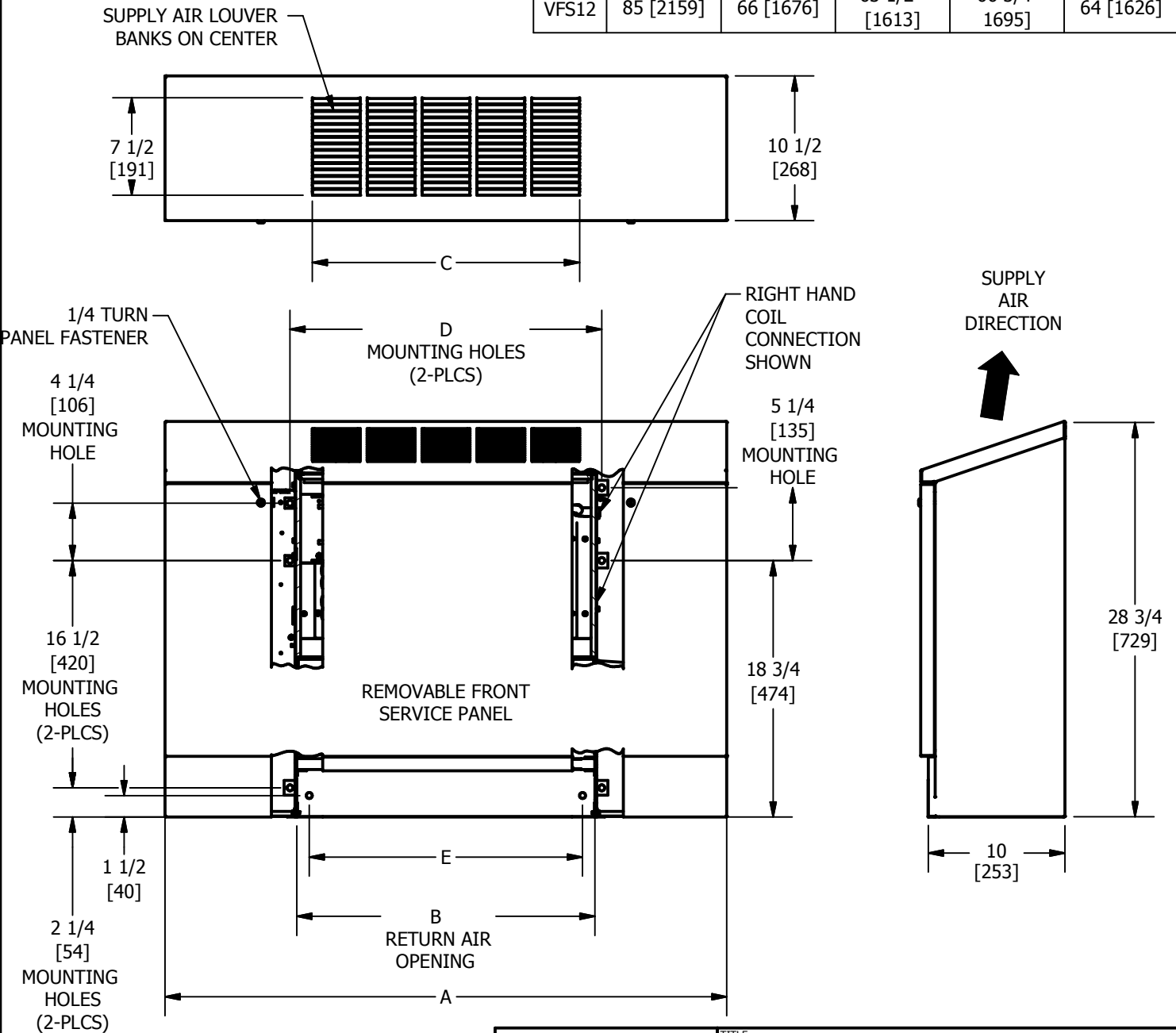


NOTES:

1. All dimensions are Inches [millimeters]. All dimensions are $\pm 1/4$ " [6mm]. Metric values are soft conversion.
2. Junction box size and location varies with unit features. Control options may be limited. Provide sufficient clearance to access electrical controls and comply with applicable codes and ordinances.
3. Standard cabinet finish is "Pearl White Satin".
4. Right hand unit shown, left hand unit similar, but opposite.
5. Parametric design available to increase Height or Width. (See parametric offerings drawing.)
6. Some control or piping package options may require extended end pockets and/or extended drain pans. (See extended end pocket drawing.)
7. False back extension available.

TABLE

Column	Column 2	Column 3	Column 4	Column 5	Column 6
UNIT MODEL	DIM A	DIM B	DIM C	DIM D	DIM E
VFS02	41 [1041]	22 [559]	19 1/2 [495]	22 3/4 [578]	20 [508]
VFS03	45 [1143]	26 [660]	23 1/2 [597]	26 3/4 [679]	24 [607]
VFS04	51 [1295]	32 [813]	27 1/2 [699]	32 3/4 [832]	30 [762]
VFS06	61 [1549]	42 [1067]	39 1/2 [1003]	42 3/4 [1086]	40 [1016]
VFS08	63 [1600]	44 [1118]	39 1/2 [1003]	44 3/4 [1137]	42 [1067]
VFS10	77 [1956]	58 [1473]	55 1/2 [1410]	58 3/4 [1492]	53 [1347]
VFS12	85 [2159]	66 [1676]	63 1/2 [1613]	66 3/4 [1695]	64 [1626]



TITLE: MODEL VFS, SERIES C

DRN BY: AJM DATE: 08/05/15 SCALE: N/A
 CKD BY: ML DATE: 08/05/15 REV: 05

DRAWING NO. 51-80065

THIS DRAWING CONTAINS PROPRIETARY DATA, UNAUTHORIZED DISCLOSURE, REPRODUCTION, OR USE IS STRICTLY PROHIBITED WITHOUT WRITTEN PERMISSION

DO NOT SCALE DRAWING
 DIMENSIONS AND DATA ARE SUBJECT TO CHANGE WITHOUT NOTICE.
 CONTACT FACTORY FOR CERTIFIED DRAWINGS.