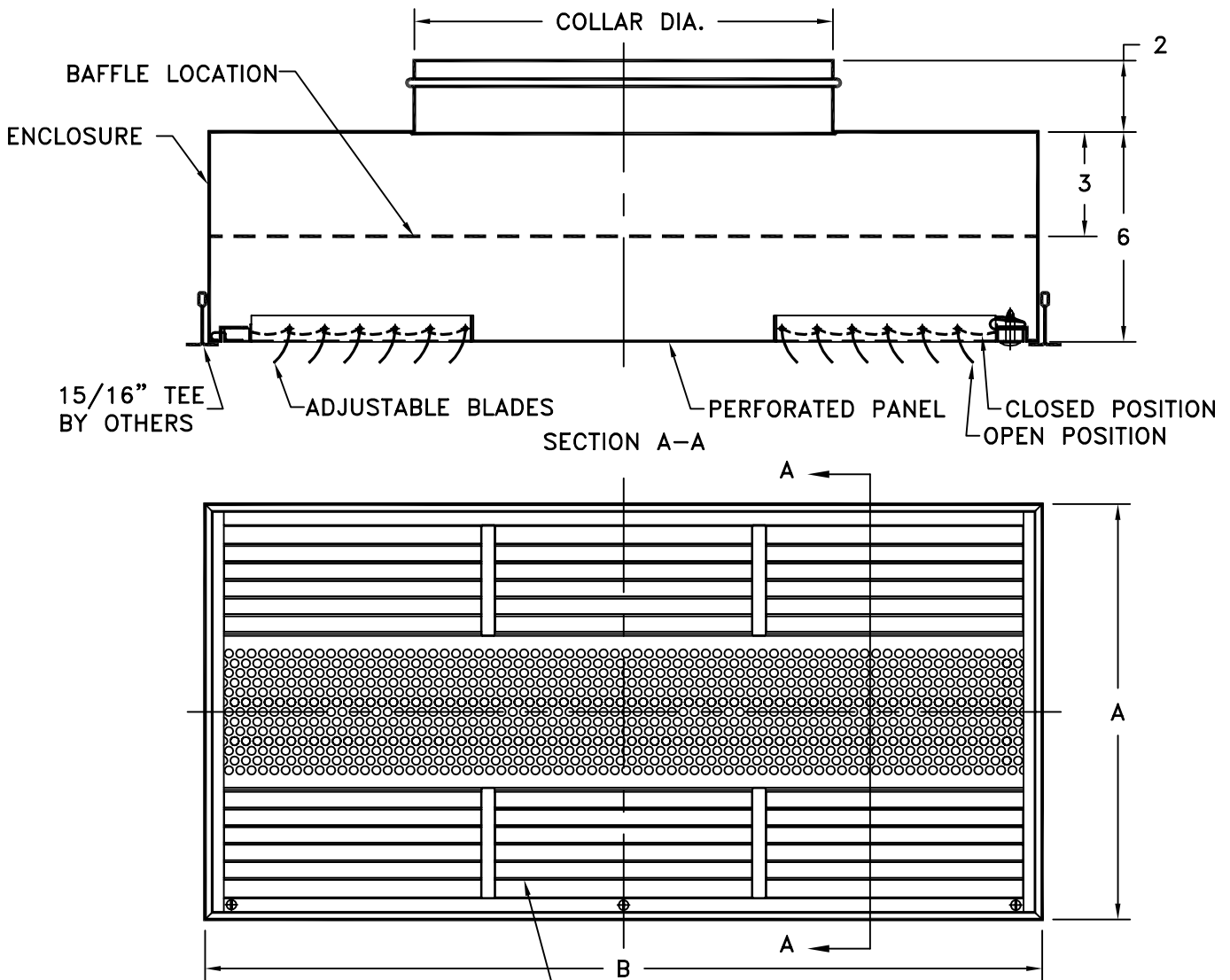


NOTES:

- NON-ASPIRATING RADIAL AIR PATTERN
- SIX SETS OF INDIVIDUALLY ADJUSTABLE BLADES PERMIT INFINITE PATTERN ADJUSTMENT
- ENGINEERED DIFFUSION BAFFLE DISTRIBUTES FLOW EVENLY ACROSS ENTIRE FACE SURFACE
- TWO INCH HIGH COLLAR FOR SECURE DUCT ATTACHMENT
- REMOVABLE HINGED FACE
- ALUMINUM, COLD ROLLED STEEL , OR STAINLESS STEEL FACE AND ENCLOSURE
- WHITE (W) ENAMEL FINISH ON ALUMINUM AND CRS MODELS
- FITS STANDARD T-BAR SYSTEMS, SPECIFY TRM147 INSTALLATION FRAME FOR SURFACE MOUNT REQUIREMENTS (EXTRUDED ALUMINUM)
- IT IS RECOMMENDED DIFFUSERS INSTALLED IN GRID CEILING SYSTEMS BE SUPPORTED INDEPENDENT OF THE CEILING HARDWARE



NOTE: 2'X4' MODEL HAS 6 SETS OF BLADES AND 2'X2' MODEL HAS 4 SETS OF BLADES. (BLADES ARE 1-PIECE EXTRUDED ALUMINUM ON ALL MODELS.)

MODEL SIZE	COLLAR DIA.	DIM. A	DIM. B
2'X2'	6",8"	23 5/8"	23 5/8"
2'X4'	10",12"	23 5/8"	47 5/8"

JOB NAME: _____	SUBMITTED BY: _____	DATE: 1/13/99	SD-1758
LOCATION: _____	<p>RADIAN Adjustable Radial Flow Diffuser</p>		
ARCHITECT: _____			
ENGINEER: _____			
CONTRACTOR: _____			