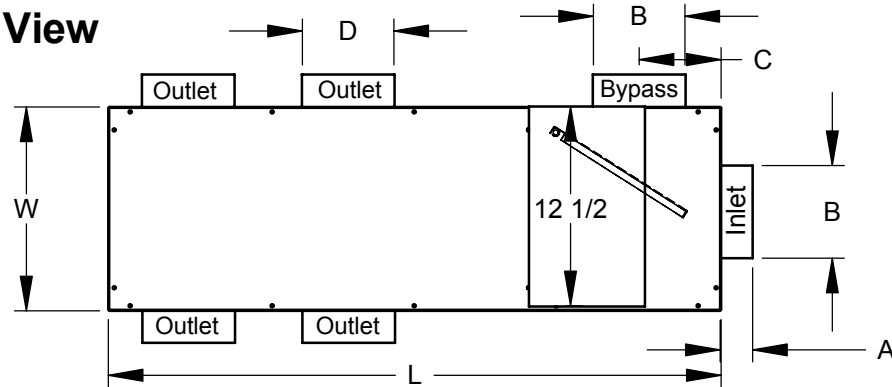
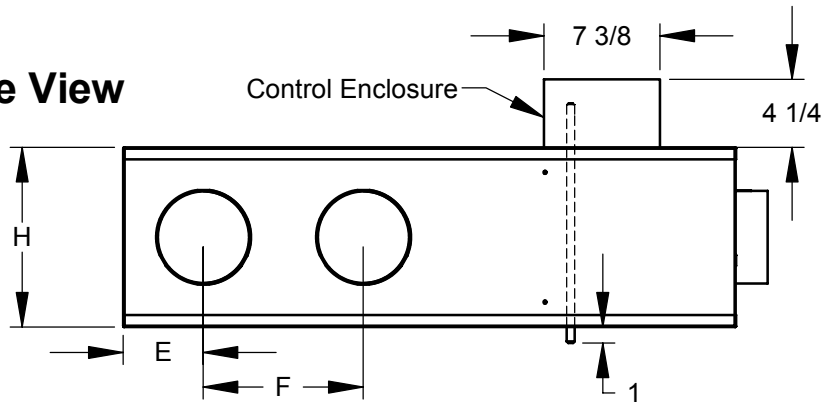


- 20 gauge galvanized steel casing
- Lined with 1/2" dual density Insulation (complies with NFPA 90A and UL 181)
- Connections are compatible with nominal rigid and flex duct

Plan View



Side View



Size	CFM (Max)	A		B	C	D	E	F	L	H	W
		w/o Man. Damper	w/ Man. Damper								
6	500	2	4 1/4	5 7/8	5 1/4	5 7/8	5 1/8	10	38 3/8	11 1/8	12 7/8
8	900	2	5 1/4	7 7/8	5 1/4	5 7/8	5 1/8	10	38 3/8	11 1/8	12 7/8
10	1300	2	6 1/4	9 7/8	6 1/4	7 7/8	6 1/8	12	44 3/8	13 1/8	14 7/8
12	2000	2	7 1/4	11 7/8	8 1/4	7 7/8	6 1/2	12	52 3/8	17 1/8	18 7/8
14	2500	2	8 1/4	13 7/8	8 1/4	9 7/8	6 1/8	12	52 3/8	17 1/8	18 7/8
16	3600	2	9 1/4	15 7/8	10 1/4	9 7/8	7 1/8	14	56 3/8	21 1/8	22 7/8
18	4400	2	10 1/4	17 7/8	10 1/4	9 7/8	7 1/8	14	56 3/8	21 1/8	22 7/8

Options

Hanger Brackets
 Manual Damper (Inlet)
 Manual Damper (Outlet)
 Manual Damper (Bypass)

Transformers

Primary Voltage: 24V 120V
 208/240V 277V

Dimensions in inches

Job: _____
 Location: _____
 Architect: _____
 Engineer: _____
 Contractor: _____

Submitted By: _____

SD-7709

Rev: B (03/05)

BPS
Bypass Terminal Unit
with Multiple Outlets