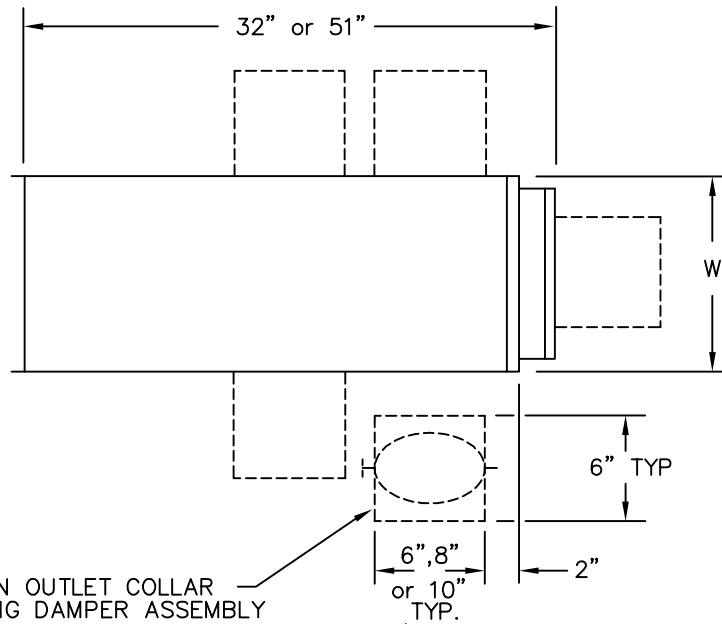


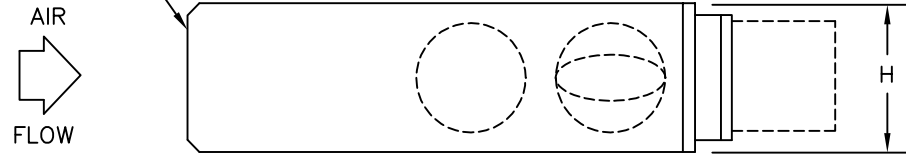
DIMENSIONAL DATA

UNIT SIZE	W	H
4,5,6	10 [254]	10 [254]
8	12 [305]	10 [254]
10	14 [356]	12-1/2 [318]
12	16 [406]	15 [381]
14	20 [508]	17-1/2 [445]
16	24 [610]	17-1/2 [445]



SPIN-IN OUTLET COLLAR /BALANCING DAMPER ASSEMBLY
 (DAMPER SLEEVE FIELD INSTALLED UNLESS OTHERWISE SPECIFIED. COLLAR REQUIRES SPIN-IN INSTALLATION WITH DUCT SEALANT AS NECESSARY.)

FIELD CONNECTION (SEE NOTE 3)



COLLAR CONFIGURATION CHART

COLLAR SIZE	MAXIMUM COLLARS	TERMINAL SIZE					
		4,5,6	8	10	12	14	16
6" ROUND	PER END	1	1	1	1	2	2
	PER SIDE	32"/51"	3/5	3/5	3/5	3/5	3/5
	PER UNIT	32"/51"	7/11	7/11	7/11	7/11	8/12
8" ROUND	PER END	1	1	1	1	1	2
	PER SIDE	32"/51"	2/4	2/4	2/4	2/4	2/4
	PER UNIT	32"/51"	5/9	5/9	5/9	5/9	6/10
10" ROUND	PER END	NA		1	1	1	1
	PER SIDE	32"/51"	NA		2/3	2/3	2/3
	PER UNIT	32"/51"	NA		5/7	5/7	5/7

CONSTRUCTION NOTES:

- MATERIAL: Galvanized steel; Casing -22 gauge; Air valve casing -22 gauge.
- INSULATION: 1/2" thick fiberglass complying with NFPA 90-A and UL 181.
- A) SDR & SDR-EH: Field connection with sheet metal screws on each side and duct sealer on all four sides.
 B) SDR-WC: Field connection with slip & drive.

NOTE: All drawings subject to change without prior notice.

TITLE: MODEL MOP-SDR, MOP-SDR-WC & MOP-SDR-EH SINGLE DUCT TERMINAL UNIT



DRN BY: CV	DATE: 05/18/92	SCALE: N/A	DRAWING NO. 15274
CKD BY: Chris H	DATE: 06/23/06	REV: 02	