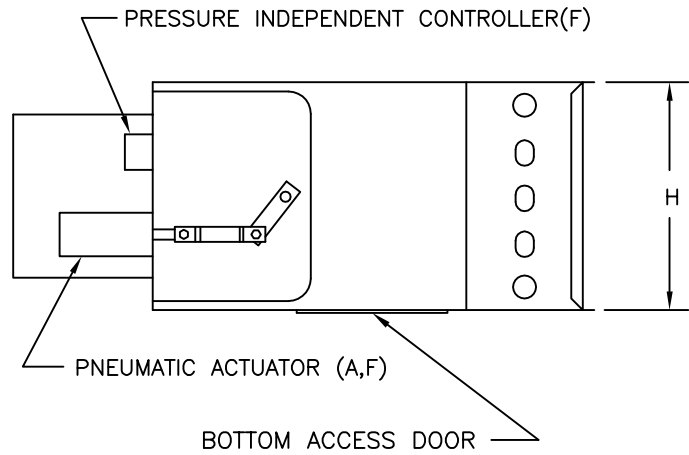
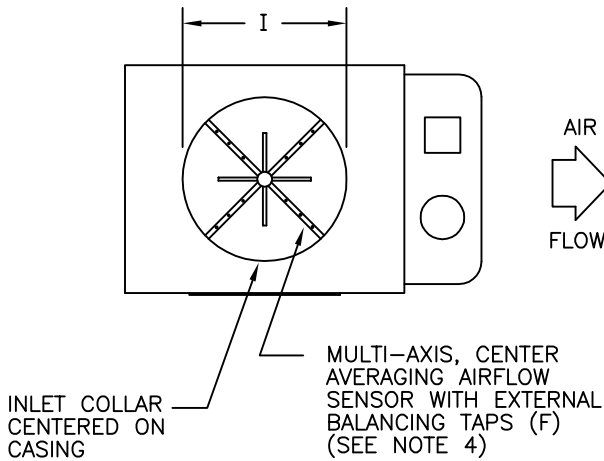
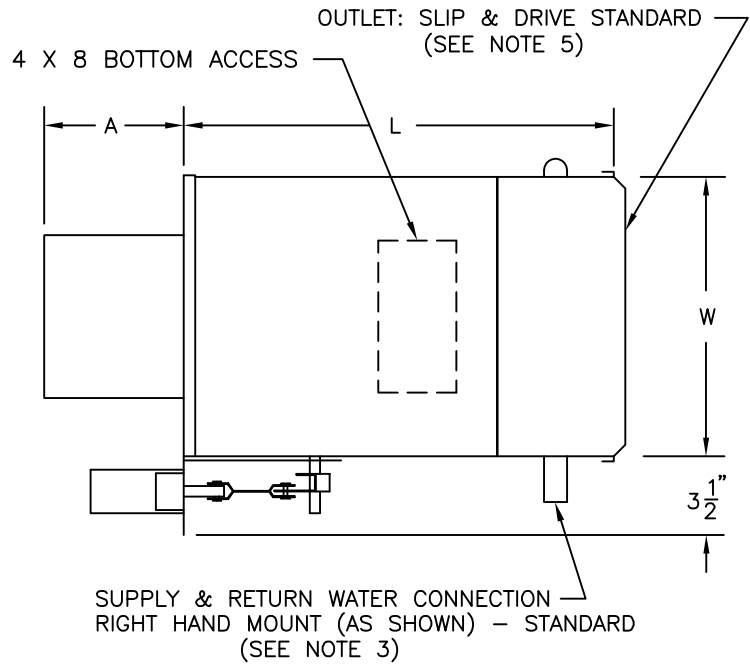


UNIT SIZE	W	H	L	A	I
4	10 [254]	10 [254]	15-1/2 [394]	10-1/2 [267]	3-7/8 [98]
5	10 [254]	10 [254]	15-1/2 [394]	10-1/2 [267]	4-7/8 [124]
6	10 [254]	10 [254]	15-1/2 [394]	6-1/2 [165]	5-7/8 [149]
8	12 [305]	10 [254]	15-1/2 [394]	6-1/2 [165]	7-7/8 [200]
10	14 [356]	12-1/2 [318]	17-1/2 [445]	6-1/2 [165]	9-7/8 [251]
12	16 [406]	15 [381]	17-1/2 [445]	6-1/2 [165]	11-7/8 [302]
14	20 [508]	17-1/2 [445]	21-1/2 [546]	6-1/2 [165]	13-7/8 [352]
16	24 [610]	17-1/2 [445]	21-1/2 [546]	6-1/2 [165]	15-7/8 [403]



CONSTRUCTION NOTES:

1. MATERIAL: Galvanized steel; Casing -22 gauge; Air valve casing -22 gauge.
2. INSULATION: 1/2" thick fiberglass complying with NFPA 90-A and UL 181.
3. HOT WATER COIL: Copper tubing with aluminum fins, 10 fins per inch. Supply and Return water connections: 1 Row coil: 1/2" O.D., 2 Row coil: 5/8" O.D., 3 & 4 Row coil: 7/8" O.D.. Coil to be externally insulated by others if required.
4. AIRFLOW SENSOR: Sizes 4 & 5 utilize single-axis linear averaging type.
5. INSTALLATION: A) If internal insulation is utilized in the downstream ductwork, the insulation must be secured in such a manner that no raw insulation edges are exposed to the airstream.
B) Inlet collar & hot water coil should be externally insulated by others (in the field) if required.

(A) PRESSURE DEPENDENT - SERIES SD000

(F) PRESSURE INDEPENDENT - SERIES SD400

TITLE: MODEL SDR-WC SINGLE DUCT
TERMINAL UNIT - SIZE 04-16
PNEUMATIC CONTROLS &
BOTTOM ACCESS DOOR



DRN BY: CCC	DATE: 4/16/12	SCALE: 1=1	DRAWING NO.
CKD BY: JL	DATE: 4/16/12	REV: 02	21826

THIS DRAWING CONTAINS PROPRIETARY DATA.
UNAUTHORIZED DISCLOSURE, REPRODUCTION, OR USE
IS STRICTLY PROHIBITED WITHOUT WRITTEN PERMISSION

DO NOT SCALE DRAWING
DIMENSIONS AND DATA ARE SUBJECT TO CHANGE WITHOUT NOTICE.
CONTACT FACTORY FOR CERTIFIED DRAWINGS.